

ClarkeTM

SHH



SHH AIR COMPRESSOR

Model Nos.

SHH2 - SHH2/9 - SHH3/9 - SHH3/24

OPERATING & MAINTENANCE INSTRUCTIONS



DECLARATION OF CONFORMITY

We declare that this product complies to the following standards/directives:

- 89/392/EEC
- 87/404/EEC
- EN 292-2
- IEC 34-1
- EN 60 335-1
- 89/336/EEC

Product Description: **AIR COMPRESSOR**

Model Numbers: **Shhh Air 2, Shhh Air 2/9, Shhh Air 3/9,
Shhh Air 3/24, Shhh Air 5/24,
Shhh Air 5/50, Shhh Air 7/100**

Serial (Batch) No: See product Data Plate

Signed 

DOC No. MGR01/2

Clarke International is a trading style of Clarke International Limited

PARTS & SERVICE

For Spare Parts and Service, please contact your nearest dealer, or CLARKE International, on one of the following numbers.

PARTS & SERVICE TEL: 020 8988 7400

PARTS & SERVICE FAX: 020 8558 3622

or e-mail as follows:

PARTS: Parts@clarkeinternational.com

SERVICE: Service@clarkeinternational.com

Clarke[®]

Thank you for purchasing this CLARKE Shhh Air silent running air compressor

Before attempting to operate the machine, please read this leaflet thoroughly and carefully follow the instructions given. In doing so you will ensure the safety of yourself and that of others around you, and you can also look forward to the compressor giving you long and satisfactory service.

GUARANTEE

This product is guaranteed against faulty manufacture for a period of 12 months from the date of purchase. Please keep your receipt as proof of purchase. This guarantee is invalid if the product is found to have been abused or tampered with in any way, or not used for the purpose for which it was intended.

Faulty goods should be returned to their place of purchase, no product can be returned without prior permission. This guarantee does not effect your statutory rights.

CONTENTS

Page

Safety Precautions	4
Electrical Connections	5
Preparation for Use	6
Operation	6
Shutting Down	7
Fault Finding	8
Maintenance	9
Parts & Service	9
Specifications	10
Accessories	10

SAFETY PRECAUTIONS



WARNING

As with all machinery, there are certain hazards involved with their operation and use. Exercising respect and caution will considerably lessen the risk of personal injury. However, if normal safety precautions are overlooked, or ignored, personal injury to the operator, or damage to property may result.

It is in your own interest to read and pay attention to the following rules:

1. COMPRESSED AIR IS DANGEROUS, NEVER direct a jet of air at people or animals, and NEVER discharge compressed air against the skin.
2. DO NOT operate your compressor with any guards removed.
3. Electrical or mechanical repairs should only be carried out by a qualified engineer. If problems occur, contact your Clarke dealer.
4. Before carrying out any maintenance, ensure the pressure is expelled from the air receiver, and the machine is disconnected from the mains supply.
5. DO NOT leave pressure in the receiver overnight, or when transporting.
6. DO NOT adjust, or tamper with the safety valves. The maximum pressure is factory set, and clearly marked on the machine.
7. DO NOT operate in wet or damp conditions. Keep the machine dry at all times. Similarly, a clean atmosphere will ensure efficient operation. Do not use in dusty or otherwise dirty locations.
8. Some of the metal parts can become quite hot during operation. Take care not to touch these until the machine has cooled down.
9. Always adjust the pressure regulator to the recommended setting for the particular spray gun or tool being used.
10. When spraying flammable materials e.g. cellulose paint, ensure that there is adequate ventilation and keep clear of any possible source of ignition.
11. Protect yourself. Think carefully about any potential hazards which may be created by using the air compressor and use the appropriate protection. e.g. Goggles will protect your eyes from flying particles. Face masks will protect you against paint spray and/or fumes.
12. Before spraying any material always consult paint manufacturers instructions for safety and usage.
13. Do not exert any strain on electrical cables and ensure that air hoses are not angled or wrapped around machinery etc.
14. When disconnecting air hoses or other equipment from your compressor ensure that the air supply is turned off at the machine outlet and expel all pressurised air from within the machine and other equipment attached to it.
15. Make sure that children and animals are kept well away from the compressor and any equipment attached to it.
16. Always ensure that all individuals using the compressor have read and fully understand these Operating Instructions.
17. Ensure that any equipment or tool used in conjunction with your compressor, has a safety working pressure exceeding that of the machine.

ELECTRICAL CONNECTIONS

Connect the mains lead to a standard, 230 Volt (50Hz) electrical supply through an approved 13 amp BS 1363 plug, or a suitably fused isolator switch.




WARNING! THIS APPLIANCE MUST BE EARTHED

IMPORTANT: The wires in the mains lead are coloured in accordance with the following code:

- Green & Yellow - Earth
- Blue - Neutral
- Brown - Live

As the colours of the flexible lead of this appliance may not correspond with the coloured markings identifying terminals in your plug proceed as follows:

- ❑ Connect GREEN & YELLOW cord to terminal marked with a letter "E" or Earth symbol "" or coloured GREEN or GREEN & YELLOW.
- ❑ Connect BROWN cord to terminal marked with a letter "L" or coloured RED.
- ❑ Connect BLUE cord to terminal marked with a letter "N" or coloured BLACK.

If this appliance is fitted with a plug which is moulded onto the electric cable (i.e. non-rewireable) please note:

1. The plug must be thrown away if it is cut from the electric cable. There is a danger of electric shock if it is subsequently inserted into a socket outlet.
2. Never use the plug without the fuse cover fitted.
3. Should you wish to replace a detachable fuse carrier, ensure that the correct replacement is used (as indicated by marking or colour code).
4. Replacement fuse covers can be obtained from your local dealer or most electrical stockists.

FUSE RATING

The fuse in the plug must be replaced with one of the same rating (**13 amps**) and this replacement must be approved to BS1362.

We recommend that this machine is connected to the mains supply via a Residual Current Device (RCD)

If in any doubt, DO NOT attempt any connections or repairs yourself. Consult a qualified electrician, your Clarke dealer,

or telephone **CLARKE International Service Dep't on: 020 8556 4443**

or, e-mail : **Service@clarkeinternational.com**

OPERATION

Firstly, ensure the compressor is on level ground...do not allow it to run if it is standing on an incline.

Check also that the mains voltage corresponds with that shown on the data label on the side of the compressor.

Ensure that the ON/OFF switch, mounted on the Pressure Switch (shown in fig. 1), is turned to the '0' (OFF) position, then plug in and switch ON at the mains supply.

NOTE: SHHH2 ONLY

This model is supplied with a foot switch, which must be depressed to start the compressor and depressed a second time to stop it. Ensure the pedal is NOT depressed when plugging in to the mains supply.

ALL OTHER MODELS

1. To start the compressor, turn the ON/OFF switch to the 'I' (ON) position - the motor should start immediately.

NOTE: Should the motor fail to start immediately, it is possible that the air receiver is already full of air. Check the tank pressure gauge (see fig. 2). If you release air, by opening the air outlet tap, the motor will start automatically once the cut-in pressure is reached. (This does not apply to the SHHH2)

Before connecting your airline to the compressor, allow it to run for 10 - 15 seconds, with the air outlet tap, (A, Fig. 3) completely open to permit a good distribution of the lubricating oil.

2. Close the outlet tap then connect one end of suitable air hose to the connector at the filter/regulator outlet, (B, Fig. 3) and the other end to the equipment to be used.
3. Set the outlet pressure by adjusting the Pressure Regulator.

To do this, lift the Pressure Regulator Knob (C Fig. 3), and turn it clockwise to increase pressure, anticlockwise to decrease as noted on the Outlet Gauge, (D, Fig. 3).

To lock the Regulator Knob and hence the outlet pressure, push the Regulator Knob down until it clicks into place.

NOTE: For most spray work do not exceed 50 psi (unless following paint manufacturer's instructions).

For other airline equipment such as, tyre gauges, staple guns, paraffin guns etc., it may be necessary to set the operating pressure at a higher (or lower) level.

Fig.1



Fig.2

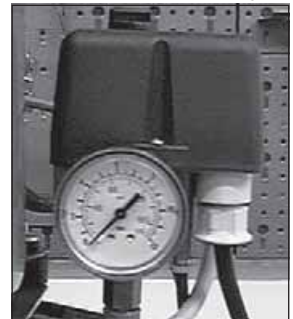
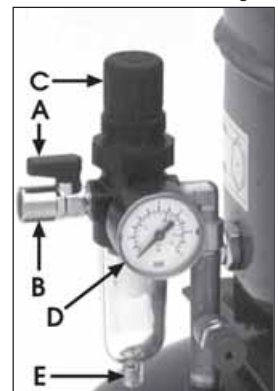


Fig.3



IMPORTANT:

Always refer to the accessory manufacturers recommendations for optimum operating pressures for their equipment.

4. With operating pressure set, reopen the air outlet tap.
5. The Pressure Switch, located within the plastic cover beneath the ON/OFF switch, should not require adjustment. This is an automatic device and has been preset at the factory to stop the motor when pressure in the receiver reaches its maximum, and to start it again when the pressure in the receiver falls to the minimum preset value. This operation is completely automatic and does not affect the spraying process in any way. However, should problems develop with the cut-in, cut out settings, please consult your Clarke dealer, or the Clarke Service Dep't.

NOTE:

- a. *If the machine pumps continuously without cutting out then the compressor is too small for the application/tool being used, and damage may result. Consult your Clarke dealer. (Does not apply to the SHHH2)*
- b. *The motor is protected by a Thermal Overload so that if the motor overheats for any reason - the thermal overload will trip, stopping the motor. Allow a period for the motor to cool down before restarting (15 - 20 minutes).*
- c. **DO NOT exceed the Duty Cycle for the machine (see Specifications).**

SHUTTING DOWN THE COMPRESSOR

1. To shut off the compressor, simply turn the ON/OFF switch (see Fig. 1), to the O' (OFF) position.

IMPORTANT:

ALWAYS switch the compressor ON or OFF at the Pressure Switch...NEVER at the mains supply switch

2. Close the air outlet tap and trigger the equipment (spray gun, air tool etc.) to release air from the air hose before disconnecting the hose from the machine.
3. Before transporting your compressor or when leaving overnight, expel all air from the receiver by opening the drain valve Fig 6. *(Does not apply to the SHHH2)*



Fig.4

IMPORTANT:

DO NOT FORGET to close the valve again when the tank is empty, particularly if the compressor may not be used for some time.

FAULT FINDING

PROBLEM	PROBABLE CAUSE	REMEDY
The compressor will not start, or stops and will not start again.	Bad connections. Blown fuse Overload cutout switch has tripped.	Check the electrical connections. Clean and tighten as necessary. Replace fuse Wait 25-20 mins before attempting to restart
Compressor does not start.	Air receiver charged (Does not apply to SHHH2) (see also item 1)	Open drain valve to expel air. Compressor should start again when pressure reduces to approx 95 psi.
The compressor does not reach the set pressure and overheats easily.	Inlet Air Filter is blocked NOTE: It is also possible that you are using more air than the compressor is capable of delivering.	Renew Oil Filler/Air Filter plug
Air leaking from the pressure switch valve when the compressor is not running.	Faulty non-return valve.	First drain the receiver completely of air. Renew the non-return valve.
Air pressure from the regulator will not adjust.	The diaphragm within the regulator body is broken.	Replace Regulator
Compressor operating, but no air from outlet	Inlet Air Filter Blocked Pressure Regulator closed Drain valve open Bleed Pipe (from Pressure Switch to non-return valve) broken or disconnected	Renew Oil Filler/Air Filter Plug Turn Regulator clockwise to set required pressure Close Drain Valve Reconnect or replace Bleed Pipe

MAINTENANCE

DAILY

1. Check the oil level before you start and top up if necessary - use Clarke Synthetic Air Compressor Oil ONLY, available from your Clarke dealer...

Part No. 3050795

The oil level is checked by viewing the oil sight glass, shown arrowed in Fig. 5

To add oil, proceed as follows:

A. SHHH 2 and 2/9

Carefully pull off the air filter, shown arrowed in Fig. 6, and inject oil into the air breather tube, until the oil level is midway on the oil sight glass.

B. SHHH 3/9 and 3/24

Remove the oil filler plug, shown arrowed in Fig. 7, and top up until the oil level is midway on the oil sight glass.

Take great care not to cross thread the filler plug when replacing.

IMPORTANT:

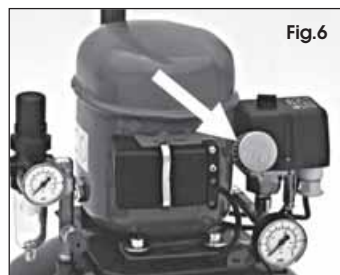
DO NOT replace the oil filler plug with anything other than the original, as the filler plug doubles as an air breather

2. Drain any condensate that may have accumulated in the air outlet filter, by pushing the valve (E Fig. 3), upwards. (Not SHHH 2)
3. When you have finished with the compressor, **ALWAYS** open the drain valve - at the base of the tank, to expel all air, and to allow any condensate to drain off. (Not SHHH 2)

DO NOT FORGET to close the valve again when the tank is empty.

PERIODICALLY

1. Renew Oil Filler Plug/Air Breather every 500 hours of operation.
2. If oil becomes contaminated it will be necessary to drain it by removing the filler plug/air filter, inverting the compressor and allowing time for the oil to drain, before filling with new SYNTHETIC OIL to the middle of the oil sight glass.



SPECIFICATIONS

	SHHH2	SHHH2/9	SHHH3/9	SHHH3/24
Motor	230V 50Hz 1Ph	230V 50Hz 1Ph	230V 50Hz 1Ph	230V 50Hz 1Ph
Max.Pressure	8 bar	8 bar	8 bar	8 bar
Air Displacement	1.1cfm	1.1cfm	2.15cfm	2.15cfm
Electric Motor	0.3 hp	0.3 hp	0.5 hp	0.5 hp
Receiver Capacity	-	9 Ltr	9 Ltr	24 Ltr
Fuse Rating	13amps	13amps	13amps	13amps
Duty Cycle	S3 40%*	S3 40%*	S2 50%**	S2 50%**
Part No.	2320750	2320755	2320770	2320800
Compressor Oil	CLARKE Synthetic Oil			
Oil Part No.	3050795			

* **S3 40%** = 4 min ON followed by 6 min OFF

** **S2 50%** = 5 min ON followed by 5 min OFF

ACCESSORIES

Your Shhh Air Compressor can be used in conjunction with a range of optional accessories for inflating tyres, air brushing, stapling, blowing and many other uses. For details contact your local Clarke dealer.

A complete kit - **Model KIT 1000**, illustrated below, is available from your Clarke dealer, ideal for many applications..... **Please quote part number 3110155**



The accessories are also available separately:

Should you experience any difficulties obtaining accessories, please contact the Clarke sales department (telephone 01992 565300) for details of your nearest dealer.