

A SELECTION FROM THE VAST RANGE OF

ClarkeTM

QUALITY PRODUCTS



AIR COMPRESSORS
From DIY to industrial. Plus air tools, spray guns and accessories.

GENERATORS
Prime duty or emergency standby for business, home and leisure.

POWER WASHERS
Hot and cold, electric and engine driven - we have what you need.

WELDERS
Mig, Arc, Tig and Spot. From DIY to auto/industrial.

METALWORKING
Drills, grinders and saws for DIY and professional use.

WOODWORKING
Saws, sanders, lathes, mortisers and dust extraction.

HYDRAULICS
Cranes, body repair kits, transmission jacks for all types of workshop use.

WATER PUMPS
Submersible, electric and engine driven for DIY, agriculture and industry.

POWER TOOLS
Angle grinders, cordless drill sets, saws and sanders.

STARTER/CHARGERS
All sizes for car & commercial use.



ClarkeTM WOODWORKER



8" (200mm) TABLE SAW

Model: CTS800B

OPERATING & MAINTENANCE INSTRUCTIONS

Clarke INTERNATIONAL

For spare parts and servicing, please contact your nearest dealer, or Clarke International on

020 - 8988 - 7400

e-mail: Parts@clarkeinternational.com e-mail: Service@clarkeinternational.com

CE

0603

PLEASE READ THIS MANUAL THOROUGHLY
BEFORE USE.

If you have any problems using, or setting up this
machine, please ring the CLARKE helpline...

020 8988 7400

- Press 1 for Parts
- Press 2 for Technical Assistance

GUARANTEE

This product is guaranteed against faults in manufacture for 12 months
from purchase date. Please keep your receipt as proof of purchase.

This guarantee is invalid if the product has been found to have been
abused in any way, or not used for the purpose for which it was
intended, or to have been tampered with in any way.

Faulty goods should be returned to their place of purchase, no product
can be returned to us without prior permission. The reason for return must
be clearly stated.

This guarantee does not affect your statutory rights.

DECLARATION OF CONFORMITY

We declare that this product complies with the following standards/directives:

• 89/336/EEC • 98/68/EEC • 73/23/EEC • 98/37/EEC (ANNEX IV) • EN 61029-2-1:2002

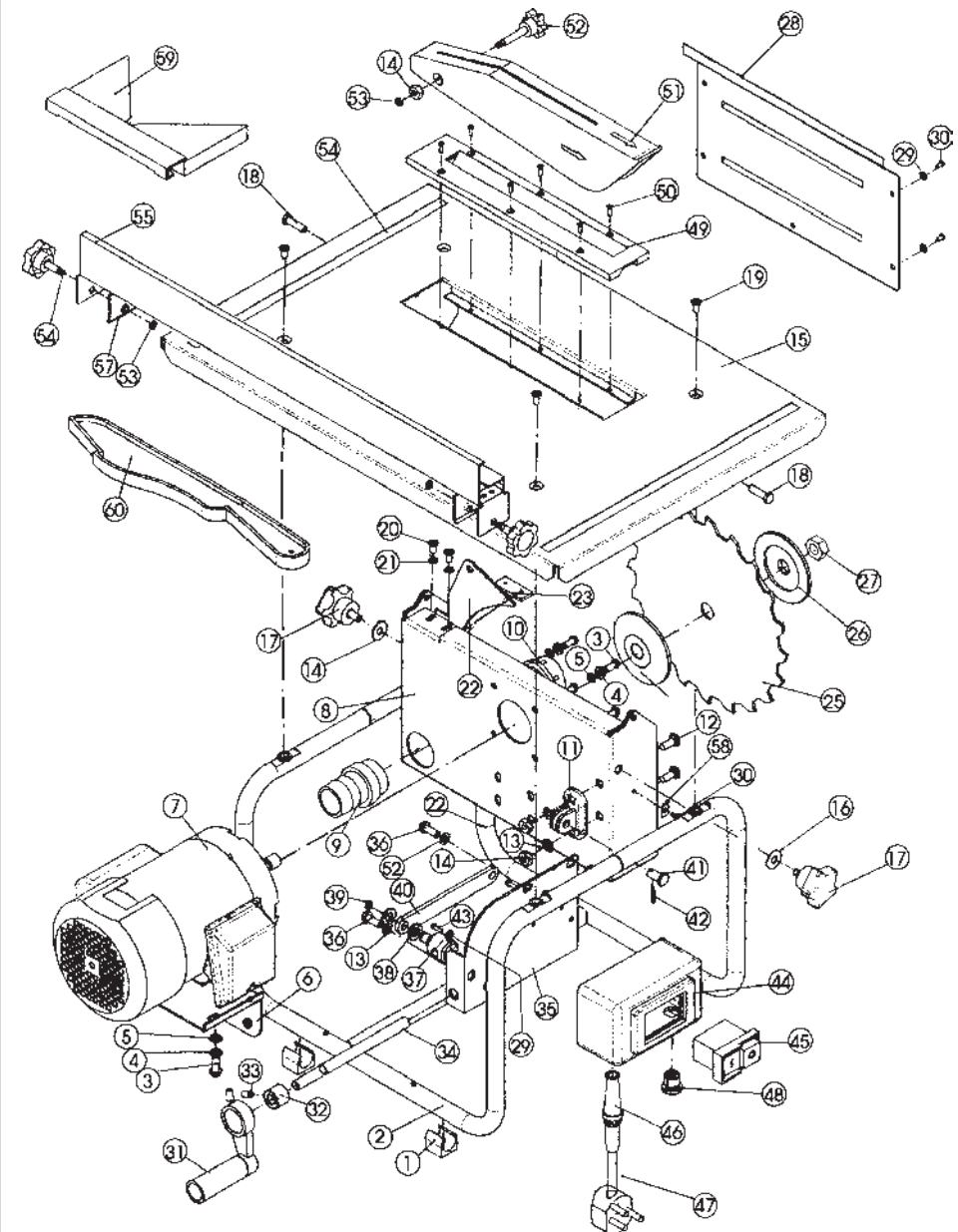
CERTIFICATE NO: M802 08 41469 063

ISSUED BY: TUV Rheinland Product Service GmbH,
Zertifizierstelle, Ridlerstr. 65,
D-80335 Munich

Serial/Batch No: See Front Cover

LS 74

PARTS DIAGRAM



PARTS LIST

No.	Description	Part No.	No.	Description	Part No.
1	Foot Support	GRCTS800B01	31	Handle	GRCTS800B31
2	Frame	GRCTS800B02	32	Screw	GRCTS800B32
3	Screw	GRCTS800B03	33	Sleeve	GRCTS800B33
4	Spring Washer	GRCTS800B04	34	Shaft	GRCTS800B34
5	Washer	GRCTS800B05	35	Box	GRCTS800B35
6	Motor Support	GRCTS800B06	36	Screw	GRCTS800B36
7	Motor	GRCTS800B07	37	Nut	GRCTS800B37
8	Lower Blade Guard	GRCTS800B08	38	Washer	GRCTS800B38
9	Dust Outlet	GRCTS800B09	39	Connecting Rod	GRCTS800B39
10	Plastic Housing	GRCTS800B10	40	Washer	GRCTS800B40
11	Conn. Rod Bracket	GRCTS800B11	41	Pin	GRCTS800B41
12	Screw	GRCTS800B12	42	Locking Pin	GRCTS800B42
13	Washer	GRCTS800B13	43	Screw	GRCTS800B43
14	Nut	GRCTS800B14	44	Switch Box	GRCTS800B44
15	Table	GRCTS800B15	45	Switch	GRCTS800B45
16	Big Washer	GRCTS800B16	46	Cable Protector	GRCTS800B46
17	Lock Knob	GRCTS800B17	47	Cable	GRCTS800B47
18	Pin	GRCTS800B18	48	Cable Gland	GRCTS800B48
19	Screw	GRCTS800B19	49	Table Insert	GRCTS800B49
20	Screw	GRCTS800B20	50	Screw	GRCTS800B50
21	Star Washer	GRCTS800B21	51	Blade Guard	GRCTS800B51
22	Riving Knife	GRCTS800B22	52	Locking Knob	GRCTS800B52
23	Plate	GRCTS800B23	53	Washer	GRCTS800B53
24	Inner Flange	GRCTS800B24	54	Ruler Label	GRCTS800B54
25	Saw Blade	See Page 13	55	Rip Fence	GRCTS800B55
26	Outer Flange	GRCTS800B26	56	Locking Knob	GRCTS800B56
27	Centre Nut	GRCTS800B27	57	Locking Clamp	GRCTS800B57
28	Side Cover	GRCTS800B28	58	Pointer	GRCTS800B58
29	Washer	GRCTS800B29	59	Cross Cut Guide	GRCTS800B59
30	Screw	GRCTS800B30	60	Push Rod	GRCTS800B60

Thank you for purchasing this CLARKE 8" (200mm) Table Saw, which is designed for DIY and hobby use, to rip and cross cut wood exclusively, up to maximum thickness of 40mm. Please read 'Restrictions Of Use' below.

Before attempting to operate this machine, please read this instruction manual thoroughly and follow all directions carefully. By doing so you will ensure the safety of both yourself and others around you, and at the same time, you may look forward to long and trouble free service from your Table Saw.

RESTRICTIONS OF USE

This saw is NOT suitable for cutting:

- Timber greater than 40mm.
- Metal, stone, rubber, plastic, bones, etc.
- Logs or round timber.

DO NOT fit any other tool or combination of blades.

DO NOT use as a free standing machine or as a hand held machine.

DO NOT modify the machine or its guards/controls in any way.

DO NOT use with any covers/guards removed.

CONTENTS

	Page
Safety Precautions	4
Electrical Connections	6
Pre-Assembly Check	7
Mounting your Table Saw	8
The Rip Fence	8
Dust Extraction	9
Operating Instructions	9
Rip Sawing	9
Cross Cutting	10
Bevel Cutting	11
Maintenance	11
Replacing the saw blade	12
Specifications	13
Spare Parts & Servicing	13
Parts List & Diagrams	14-15

SAFETY PRECAUTIONS

As with all machinery, there are certain hazards involved with their operation and use. Exercising respect and caution will considerably lessen the risk of personal injury. However, if normal safety precautions are overlooked or ignored, personal injury to the operator or damage to property may result.

1. **KNOW YOUR MACHINE.** Read this manual carefully. Learn the machines' applications and limitations, as well as the specific potential hazards peculiar to it.
2. **KEEP GUARDS IN PLACE** and in working order.
3. **ENSURE THE MACHINE IS EARTHED:** The machine is equipped with three-pin plug which should be plugged into a three-hole electrical socket. Never remove the earth pin.
4. **REMOVE ADJUSTING KEYS AND SPANNERS.** Form habit of checking to see that keys and spanners etc., are removed from the machine before turning it ON.
5. **KEEP WORK AREA CLEAN.** Cluttered areas and benches invite accidents.
6. **DON'T USE IN DANGEROUS ENVIRONMENT.** Don't use power tools or machines in damp or wet locations, or expose them to rain. Keep work area well lit.
7. **KEEP CHILDREN AND VISITORS AWAY.** All children and visitors should be kept a safe distance from work area.
8. **MAKE WORKSHOP CHILDPROOF** - with padlocks, master switches or by removing starter keys.
9. **DON'T FORCE THE MACHINE.** It will do the job better and safer at the rate for which it was designed.
10. **WEAR PROPER APPAREL.** Loose clothing, gloves, neckties, rings, bracelets, or other jewellery may get caught in moving parts. Nonslip footwear is recommended. Wear protective hair covering to contain long hair.
11. **USE SAFETY GLASSES.** Also use face or dust mask if cutting operation is dusty. Everyday eyeglasses only have impact resistant lenses, they are NOT safety glasses.
12. **USE EAR DEFENDERS.**
13. **DON'T OVERREACH.** Keep proper footing and balance at all times.
14. **MAINTAIN TOOLS IN TOP CONDITION.** Keep tools sharp and clean for best and safest performance. Follow instructions for lubricating and changing accessories.
15. **DISCONNECT TOOLS/MACHINES** from electrical supply before servicing and when changing accessories such as blades, bits, cutters, etc.
16. **USE RECOMMENDED ACCESSORIES.** Consult the manual for recommended accessories. The use of improper accessories could be hazardous.
17. **NEVER STAND ON TOOL.** Serious injury could occur if the tool is tipped or if the cutting tool is accidentally contacted.

SPECIFICATIONS

Model No.	CTS800B
Part No.	6500723
Motor	230V 50Hz 1ph
Power Rating	600Watts
Motor Speed (No Load)	2950RPM
Blade Size	200mm, 16mm Bore
Depth of cut at 90 degrees	40mm
Depth of cut at 45 degrees	25mm
Table size	500 x 335mm
Dust Port	40mm O.D.
Weight	12.5kg
Noise Level	108dB _{LWA}
(Sound Power Level)	(Cutting 25mm soft wood)
Duty Cycle	S3 30%**

** This denotes that this machine may be used for 3 minutes only, in any 10 minute period. Please note that CLARKE International reserves the right to modify design at any time without prior notice. Any significant change will be reflected in this manual.

SPARE PARTS AND SERVICE

REPLACEMENT BLADES

Replacement blades for your CTS800 Table Saw are available from your local dealer as follows:

24 Tooth TCT Blade Model: TCT200 Part No.
6490070

For Spare Parts and Service, please contact your nearest dealer, or CLARKE International, on one of the following numbers.

PARTS & SERVICE TEL: 020 8988 7400

or e-mail as follows:

PARTS: Parts@clarkeinternational.com

SERVICE: Service@clarkeinternational.com

REPLACING THE SAW BLADE

1. Remove the side cover by unscrewing the five securing screws.
2. Place a steel bar or screwdriver blade between the table top and one of the saw blade teeth, (at the point arrowed in Fig.8), then undo the saw blade securing nut - normal right hand thread.
3. Remove the outer flange followed by the saw blade by angling it outwards at the bottom so that it is clear of the motor shaft, and carefully withdrawing it from below.
4. Replace in reverse order ensuring the saw blade teeth face downwards at the front of the table.

Hold the blade firmly whilst wearing a good industrial glove when tightening the centre nut, taking care to avoid damaging your hand on the sharp teeth.

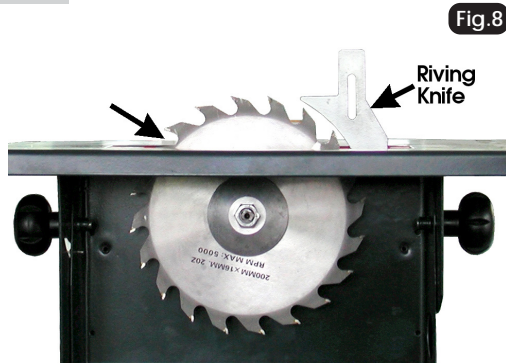
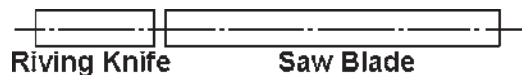


Fig.8

RIVING KNIFE

The riving knife is an important component and must always be in place and directly in line with the saw blade. It prevents the work from chattering as it passes through the blade.



MUST be in line

If necessary, remove the Table Insert, then slacken the two securing screws and adjust accordingly, ensuring the clearance between the saw blade and riving knife is 5mm **maximum**. Inspect at regular intervals to ensure the gap is correctly maintained, and adjust as required.

It may also be necessary to remove the Riving Knife and bend back into shape if it is not exactly in line with the saw blade.

18. BEFORE USING THE MACHINE, check for damage. If a guard, or other part is found to be damaged, it should be carefully checked to ensure that it will operate properly and perform its intended function. Check for alignment, binding, or breakage of parts, mountings, and any other conditions that may affect its operation. A guard or any other part that is found to be damaged should be properly repaired or replaced.
20. NEVER LEAVE MACHINE RUNNING UNATTENDED. TURN POWER OFF. Don't leave machine until it comes to a complete stop.
21. DRUGS, ALCOHOL, MEDICATION. Do not operate tool whilst under the influence of drugs, alcohol or any medication.
22. MAKE SURE THE MACHINE IS DISCONNECTED FROM POWER SUPPLY while motor is being mounted, connected or reconnected.
23. ALWAYS use saw Blade Guard and Riving Knife for every operation.
24. ALWAYS hold the work firmly against the Rip Fence when ripping.
25. ALWAYS USE PUSH-STICK when required. Always use a push-stick for ripping narrow stock. (Refer to Rip Sawing page 9)
26. NEVER Rip Saw 'freehand', which means using your hands to support or guide the work piece. Always use the Rip Fence to position and guide the work.
27. NEVER stand or have any part of your body in line with the path of the saw blade.
28. NEVER reach behind or over the cutting tool for any reason.
29. ALWAYS remove the Rip Fence when cross cutting, unless using the angle guide.
30. NEVER use the Rip Fence as a cut-off when cross cutting.
31. NEVER attempt to free a stalled saw blade without first turning the saw OFF. Switch off and disconnect from power supply immediately to prevent motor damage.
32. PROVIDE adequate support to the rear and sides of the saw table for wide or long workpieces.
33. AVOID KICKBACKS (work thrown back towards you) by:
 - a. keeping the blade sharp,
 - b. keeping the Rip Fence in line with the saw blade,
 - c. keeping the Riving Knife and Blade Guard in place,
 - d. by not releasing the work before it is pushed all the way past the saw blade,
 - e. by not ripping work that is twisted or warped or does not have a straight edge to guide along the fence.
34. AVOID awkward operations and hand positions where a sudden slip could cause your hand to move into the saw blade.
35. NEVER use solvents to clean plastic parts. Solvents could possibly dissolve or otherwise damage the material. Only a soft dry cloth should be used to clean plastic parts.
36. BOLT the saw to a supporting surface (table, bench or mounting board, as appropriate)
37. ALWAYS ensure the Riving Knife is directly in line with the Saw Blade at all times
38. DO NOT exceed the Duty Cycle for the machine. (see Specifications).

ELECTRICAL CONNECTIONS

Connect the mains lead to a standard 230 volt (50Hz) electrical supply via a 13 amp BS1363 plug fitted with a 5 amp fuse.

WARNING: THIS APPLIANCE MUST BE EARTHED.

IMPORTANT: The wires in the mains lead are coloured in accordance with the following code:

Green & Yellow	-	Earth
Blue	-	Neutral
Brown	-	Live

As the colours of the flexible cord of this appliance may not correspond with the coloured markings identifying terminals in your plug, proceed as follows:

- Connect GREEN & YELLOW cord to terminal marked with a letter "E" or Earth symbol "⏏", or coloured GREEN or GREEN & YELLOW.
- Connect BROWN cord to terminal marked letter "L" or coloured RED.
- Connect BLUE cord to plug marked letter "N" or coloured BLACK.

FUSE RATING

The fuse for the plug in this appliance must be rated at **5 amps**.

We recommend that this machine is connected to the mains supply via a Residual Current Device (RCD).

EXTENSION CABLES

If an extension cable is used always ensure that it is fully unwound. The maximum extension length is 25M, and the wire size in the cables must be at least 1.5mm in diameter. As a general rule the extension cable must be thicker than the cable supplied with the Table Saw. If longer extensions are required please seek advice from a qualified electrician.

**IF IN DOUBT CONSULT A QUALIFIED ELECTRICIAN.
DO NOT ATTEMPT ANY ELECTRICAL REPAIRS YOURSELF.**

BEVEL CUTTING

Rip and cross cuts can be made at angles between 0° - 45°.

1. Slacken the Blade securing knobs, front and rear (Front knob is arrowed in Fig.7).
2. Turn the Adjuster handle as required to the desired angle as indicated on the scale.
3. Tighten both securing knobs.
4. Proceed to cut as for rip or cross cutting.



Note: If precision is required, use a protractor between the blade and table.

MAINTENANCE

WARNING!

Ensure the machine is disconnected from the mains supply BEFORE any maintenance tasks or adjustments are carried out.

Your Table Saw requires very little maintenance.

Carrying out those tasks specified below, will not only ensure the maximum safety of operation, but will also prolong the life of your machine.

AFTER EACH USE:

Saw dust must be removed from the machine.

Remove the side cover by unscrewing the five securing screws, and use a vacuum cleaner to ensure all dust is removed, before replacing the cover.

All plastic components can be wiped clean with a soft dry cloth.

KEEP SAW BLADE SHARP.

Use a half round file where necessary to keep the teeth sharp. A blade that is badly dulled or with broken or badly damaged teeth should be replaced immediately.

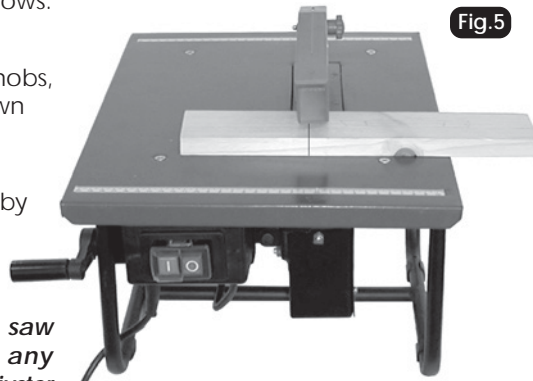
NOTE: The Rip fence can be mounted left or right hand side of blade.

2. Hold workpiece against the Rip Fence and feed through blade. Do not force it. If the motor slows, feed more slowly. NEVER hold on to offcut of the wood.
3. If sawing long lengths of material, arrange a support at the rear of the machine, or use an assistant to support the material as it runs off.
4. **IMPORTANT! 1. Always use the push stick to push the workpiece past the saw blade. 2.. DO NOT exceed the Duty Cycle..see 'Specifications'**

CROSS CUTTING

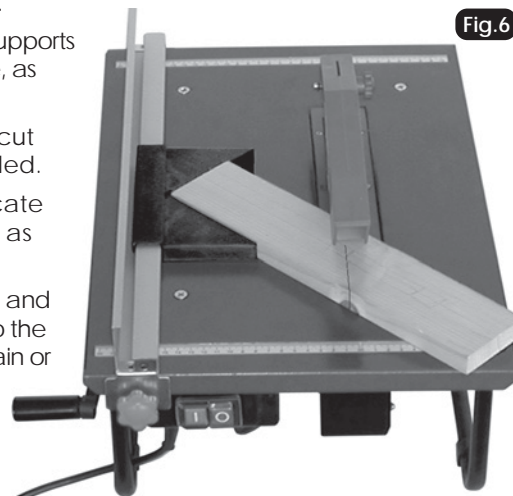
Cross Cutting is the term used to describe a cut which is across the grain of the wood. This operation is carried out as follows:

1. Remove the Rip Fence.
2. Slacken the Blade securing knobs, front and rear. (These are shown more clearly Fig.7 on p.11)
3. Turn the Adjuster handle so that the blade is at 90°, as indicated by the pointer, then tighten the securing knobs.



NOTE: If a precision 90° cut is required, check the angle of the saw blade using a square, make any adjustments necessary using the adjuster handle, then reset the pointer.

4. Clearly mark the workpiece where the cut is required.
5. Hold workpiece firmly and feed through saw blade, ensuring feed is straight (DO NOT attempt to cut curves).
6. If sawing long sections arrange supports at one or both sides of machine, as required.



Cross cuts at 45° may also be cut using the Special guide provided.

Attach the Rip Fence, and locate the guide in the slot provided, as shown in Fig.6.

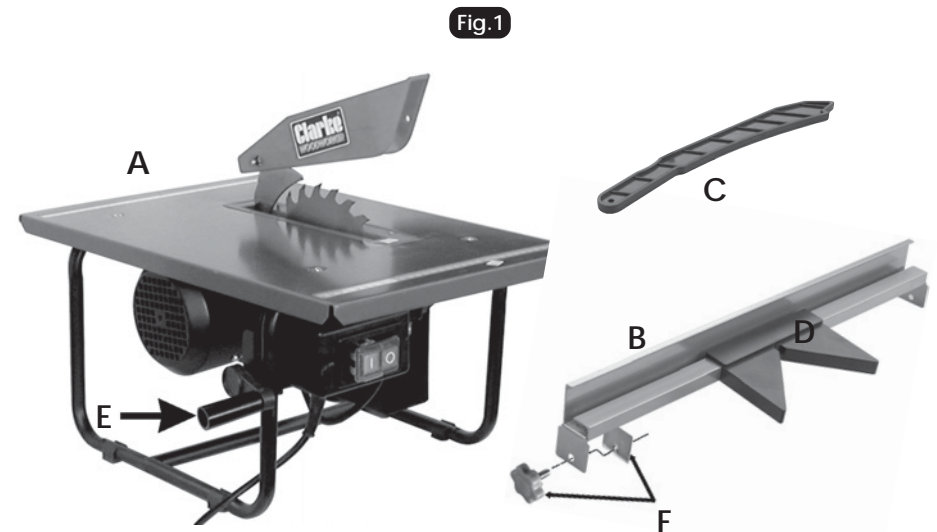
Hold the work firmly in the guide, and proceed to feed the work into the blade, ensuring you do not restrain or hold on to the offcut.

IMPORTANT: The Ripfence may ONLY be used for cross cutting in conjunction with the angle gauge.

PRE-ASSEMBLY CHECK

Unpack your Table Saw and lay out the various components, checking to ensure that all parts detailed below have been supplied. Should any of the components be missing or damaged then please contact your dealer immediately.

A	Table Saw with fitted plug	1
B	Rip Fence assembly	1
C	Push Stick	1
D	45° Cross Cut Guide	1
E	Crank Handle C/w Screw	1
F	Knob Headed Screws with clamp (For use with Ripfence)	2



Some minor assembly work is required, as follows:

1. Attach the handle, arrowed in the illustration above, using the screw to secure.
2. The Rip Fence. Simply insert the knob headed screws through the holes in the end of the fence and screw on the clamp plates.

BEFORE USE, the Table Saw MUST be bolted firmly to either a workbench or a piece of sturdy plywood, and this must then be firmly clamped to a workbench before use. See Mounting the Saw.

MOUNTING THE SAW

If the Saw is to be bolted to a workbench, you should ensure that it is positioned in the most convenient location. Ensure adequate lighting is available and the electrical supply is close at hand.

A mounting board should be used if a permanent mounting is unavailable or not desired. The board is necessary in order to give the saw stability during operation.

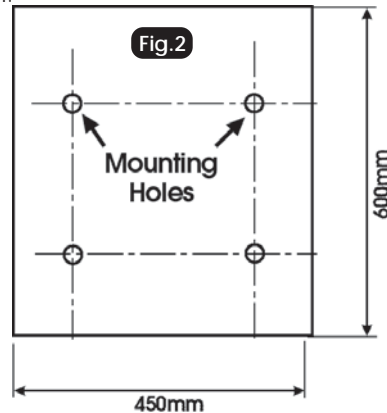
It is recommended that the board dimensions are not less than 450x600mm and at least 15mm thick.

Once mounted, as described below, the board must be securely clamped to a workbench, using at least two 'G' clamps, one at each side, and a constant check made to ensure they are tight during operation.

To mount the saw, drill four 8mm holes, using the machine as a template to mark out the position of the holes, and bolt the machine down with 5mm bolts, ensuring flat washers are used between the bolt head and base.

If a mounting board is used, countersunk head screws should be used, with the holes in the underside of the board countersunk to suit. The mounting holes should be centrally located on the board.

It is important to ensure the nuts are not over-tightened, and are tightened progressively to avoid distorting the base.



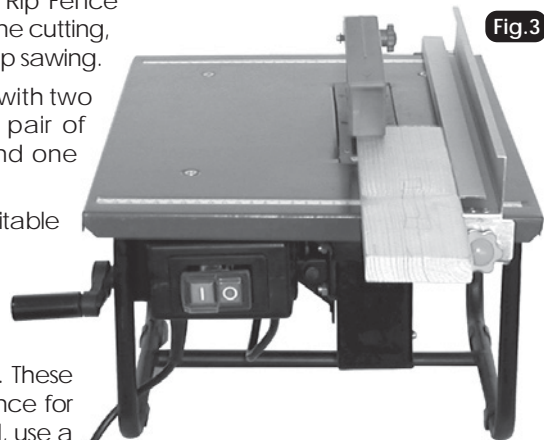
RIP FENCE

Your Table Saw is provided with a Rip Fence which is essential to ensure straight line cutting, and should **ALWAYS** be used when rip sawing.

The Fence is secured to the table with two knob head screws, acting on a pair of clamp plates, one at the front and one at the rear of the table.

The fence may be placed at any suitable position on the table, and either left or right of the saw blade. Do not over-tighten the securing knobs.

Measurement scales are provided at the front and back of the table. These may be used to position the rip fence for rough cutting. If precision is required, use a ruler between the rip fence and the front and back of the blade.



Rip Fence is shown in its Lower Position

DUST EXTRACTION

This table saw is equipped with a dust extraction port at the rear of the machine. For safe operation, we recommend that a suitable dust extraction device or vacuum cleaner is connected during operation.

WARNING:

Excessive sawdust build up around the motor could possibly ignite and cause damage to either the motor, table saw or your workshop.

OPERATION

Before use, **ALWAYS** check:

- To ensure ALL parts are sound and properly fixed. (Any broken or damaged part must be replaced before machine is used).
- Supply voltage is compatible with machine i.e. 230V, A.C. 50Hz.
- To ensure the machine is properly mounted (see Mounting the Saw).
- To ensure the blade rotates freely.
- To ensure the Riving Knife is directly in line with the saw blade (See p12).
- To ensure the Blade Guard falls completely to the table **under its own weight**.
- To ensure you comply with all safety precautions (see pages 3 -5),

When perfectly satisfied switch ON by pressing the switch 'I', at the front of the machine. Switch OFF by pressing 'O'.

NOTE: ON/OFF switch is a 'no volt release' type, i.e. if the power fails or is disconnected while the machine is in use, the machine will not restart when power is restored.....the 'I' (ON) button must be pressed.

RIP SAWING

Rip Sawing is the term used to describe a cut which is in the same direction as the grain of the wood.

For this operation the Rip Fence should always be used.

To Rip Cut a piece of wood you should proceed as follows:

1. Adjust the Rip Fence to required width of cut. - the distance between the edge of the blade and the Rip Fence, ensuring it is perfectly parallel to the saw blade. Use the measurement scales at the front and back of the table for rough cutting or measure the distance between the front and back of the blade to the rip fence with a rule for precision.

