

Elanlike®

WOODWORKER



DUST EXTRACTOR

MODEL No: CDE1000

Part No:6471165

OPERATING & MAINTENANCE INSTRUCTIONS



GC0514

INTRODUCTION

Thank you for purchasing this CLARKE Dust Extractor which is intended to keep work areas free from dust particles & wood shavings etc.

Please read this manual thoroughly and follow the instructions carefully. Before attempting to use the product, thoroughly familiarise yourself with the product & its operation. In doing so you will ensure the safety of yourself and that of others around you, and you can look forward to the product giving you long and satisfactory service.

GUARANTEE

This product is guaranteed against faulty manufacture for a period of 12 months from the date of purchase. Please keep your receipt which will be required as proof of purchase.

This guarantee is invalid if the product is found to have been abused or tampered with in any way, or not used for the purpose for which it was intended.

Faulty goods should be returned to their place of purchase, no product can be returned to us without prior permission.

This guarantee does not effect your statutory rights.

ENVIRONMENTAL RECYCLING POLICY



Through purchase of this product, the customer is taking on the obligation to deal with the WEEE in accordance with the WEEE regulations in relation to the treatment, recycling & recovery and environmentally sound disposal of the WEEE.

In effect, this means that this product must not be disposed of with general household waste. It must be disposed of according to the laws governing Waste Electrical and Electronic Equipment (WEEE) at a recognised disposal facility.

SPARE PARTS & SERVICING CONTACTS

For parts & Servicing, please contact your nearest dealer, or CLARKE International, on one of the following numbers.

PARTS & SERVICE TEL: 020 8988 7400

PARTS & SERVICE FAX: 020 8558 3622

TABLE OF CONTENTS

INTRODUCTION	2
GUARANTEE	2
ENVIRONMENTAL RECYCLING POLICY	2
SPARE PARTS & SERVICING CONTACTS	2
TECHNICAL SPECIFICATION	3
SAFETY PRECAUTIONS	4
ELECTRICAL CONNECTIONS	6
UNPACKING & ASSEMBLY	7
OPERATION & MAINTENANCE	9
TROUBLESHOOTING	9
PARTS LIST & DIAGRAM	10
DECLARATION OF CONFORMITY	11

TECHNICAL SPECIFICATION

Specification	
Weight	10 kg
Dimensions (d x h)	390 x 665 mm
Inlet Hose Diameter / Length	100 x 2000 mm
Air Flow	183 m ³ /h
Suction	25000 Pa
Container Volume	50 L
Input Voltage	230v / 50 Hz
Motor Speed	20000 rpm
Input Wattage	1100 W
Fuse Rating	13 A
A weighted sound pressure level (L _{pa})	80 dB

Please note that the details and specifications contained herein, are correct at the time of going to print. However, CLARKE International reserve the right to change specifications at any time without prior notice.

SAFETY PRECAUTIONS

WORK AREA

1. **ALWAYS** keep the work area clean and well lit. Floors should always be kept clear. Cluttered or dark areas invite accidents.
2. **ALWAYS** keep children away and keep visitors at a safe distance from the work area, especially whilst operating the machine.

PERSONAL SAFETY

1. **ALWAYS** stay alert, watch what you are doing and use common sense when operating a power tool. Do not use a machine while you are tired or under the influence of medication, drugs or alcohol.
2. **NEVER** over-reach. Keep your proper footing and balance at all times to enable better control of the machine in unexpected situations.
3. **ALWAYS** wear safety goggles, manufactured to the latest European Safety Standards. Everyday eyeglasses do not have impact resistant lenses and are not safety glasses.
4. **ALWAYS** concentrate on the job in hand, no matter how trivial it may seem. Accidents are caused by carelessness due to familiarity.
5. **ALWAYS** keep your proper footing and balance at all times. For best footing, wear rubber soled shoes. Keep floor clear of oil, scrap wood, etc.

GENERAL USE AND CARE

1. **ALWAYS** ensure that the appliance cannot be started inadvertently by using the ON/OFF switch whenever carrying out maintenance.
2. **ALWAYS** maintain in top condition. Keep appliances clean for the best and safest performance. Follow maintenance instructions.
3. **NEVER** modify this product in any way. Use it only for the purpose for which it is designed.
4. **ALWAYS** check for damage. Check for any condition that may affect the machine's operation. Any damage should be properly repaired or the part replaced. If in doubt, **DO NOT** use the machine. Consult your Clarke dealer.
5. **ALWAYS** keep the mains cable well away from any machinery and ensure an adequate electrical supply is close to hand so that the operation is not restricted by the length of cable.
6. **NEVER** drag the machine by its power cable, or pull the cable to disconnect it from the power supply.
7. **ALWAYS** ensure the switch is off before plugging into mains. Avoid accidental starting.

8. **NEVER** use if the ON/OFF switch does not turn it on and off. A machine that cannot be controlled with the switch is dangerous and must be repaired.
9. **ALWAYS** store out of reach of children and do not allow persons unfamiliar with these instructions to operate this machine.

DUST EXTRACTOR SAFETY INSTRUCTIONS

1. **ALWAYS** ensure that the dust extractor is properly positioned where necessary to prevent it from moving during use and that the immediate area is kept clear.
2. **ALWAYS** use a face or dust mask if operation is particularly dusty such as when disposing of the contents of the collecting bag.
3. **ALWAYS** disconnect the dust extractor from the power supply before servicing or removing & emptying the collecting bag etc.
4. **NEVER** leave the dust extractor running unattended. Turn power off and wait for the machine to come to a complete stop before leaving.
5. **DO NOT** pick up flammable or readily combustible material, hot ashes, coals, burning cigarettes or other smoking substances etc. or use in the presence of explosive liquids or vapour.
6. **DO NOT** use in enclosed areas where flammable, explosive or toxic vapours are given off, by oil based paints, paint thinner, petrol etc.
7. **DO NOT** use if the electric cable, plug, collection bag or the motor is in poor condition.
8. **ALWAYS** use in an upright position.

SERVICING

1. If necessary, have your machine repaired by a qualified person using identical replacement parts. This will ensure that the safety of the machine is maintained.

Please keep these instructions in a safe place for future reference.

ELECTRICAL CONNECTIONS

This product is provided with a 13 amp BS 1363 plug, fitted with a 13amp fuse and MUST be connected to a standard, 230 Volt (50Hz) electrical supply, preferably through an approved plug, or a suitably fused isolator switch.



WARNING: THIS APPLIANCE MUST BE EARTHED

IMPORTANT: The wires in the mains lead should be wired up in accordance with the following colour code:

Green & Yellow - Earth

Blue - Neutral

Brown - Live

As the colours of the flexible cable of this appliance may not correspond with the coloured markings identifying terminals in your plug, proceed as follows:

- Connect the GREEN & YELLOW coloured cord to the plug terminal marked with a letter E or Earth symbol "⏏" or coloured GREEN or GREEN & YELLOW.
- Connect the BROWN coloured cord to the plug terminal marked a letter "L" or coloured RED.
- Connect the BLUE coloured cord to the plug terminal marked a letter "N" or coloured BLACK

If this appliance is found to be fitted with a plug which is moulded on to the electric cable (i.e. non-rewireable) please note:

1. The plug must be thrown away if it is cut from the electric cable. There is a danger of electric shock if it is subsequently inserted into a socket outlet.
2. Never use the plug without the fuse cover fitted.
3. Should you wish to replace a detachable fuse carrier, ensure that the correct replacement is used (as indicated by marking or colour code).
4. Replacement fuse covers can be obtained from your local Clarke dealer or most electrical stockists.

FUSE RATING

The fuse in the plug must be replaced with one of the same rating and this replacement must be ASTA approved to BS1362.

We strongly recommend that this machine is connected to the mains supply via a Residual Current Device (RCD).

UNPACKING

When unpacking please check contents and advise your dealer immediately if any parts are missing. The essential parts of the machine are as follows;

1. Motor casing
2. Shavings container
3. On/off switch
4. Locking strap

Release the locking strap and remove the motor casing.

The following are supplied loose and require assembly;

5. Inlet hose (100 mm dia)
6. Hose clamps (x2)
7. Filter cartridge
8. Filter bags
9. Inlet adaptor set (28, 35, 40, 63 & 99mm diameter sizes)

Instruction manual (this document)

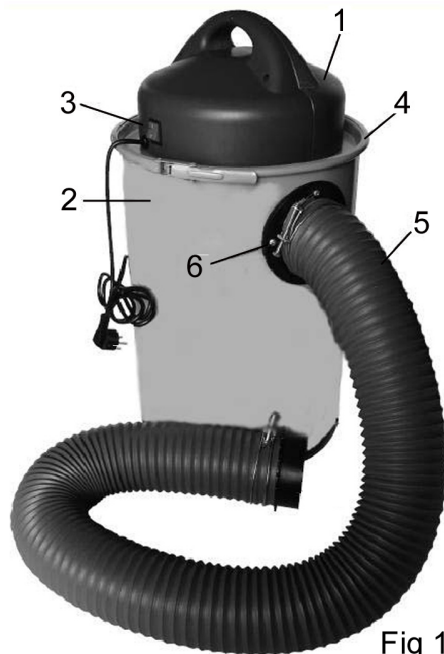


Fig 1

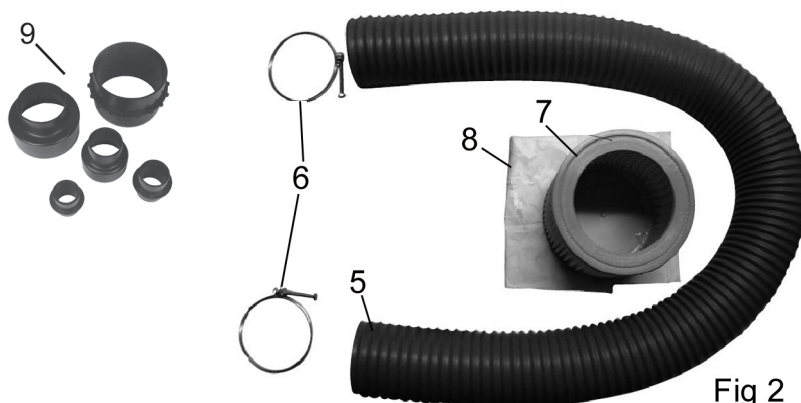
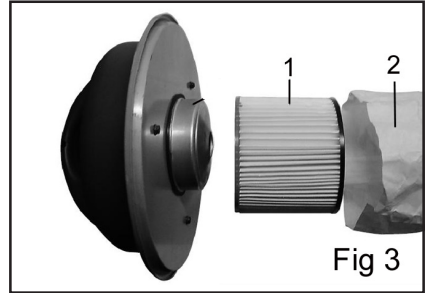


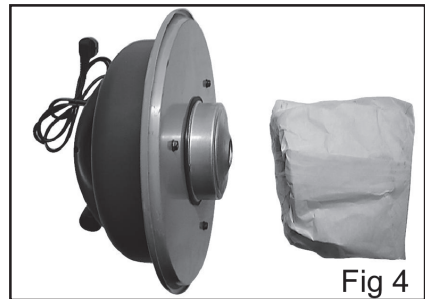
Fig 2

ASSEMBLY

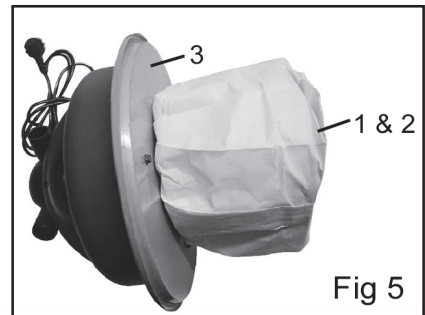
1. Place filter cartridge (1) into filter bag (2).



2. Fold any overhang into the filter cartridge.



3. Push the filter cartridge (1) complete with bag (2), onto the fan housing part of the motor casing (3).
4. Sit the entire motor casing on the container and secure with the locking strap as shown in Fig 1.



5. Attach the inlet hose to the machine body using one hose clamp as shown in Fig 6.



6. Secure the other end of the inlet hose to the hose coupling using the other hose clamp as shown in Fig 7.
- The inlet adaptors can then be connected as required to suit the size of the extract duct on the wood-working appliance to be used.



Fig 7

OPERATION & MAINTENANCE

Start the machine using the ON/OFF switch (I=on/O=off). Connect the inlet hose to the outlet on your woodworking appliance using the inlet adaptors. Take care never to suck in foreign objects such as screws, nails, large pieces of plastic or wood.

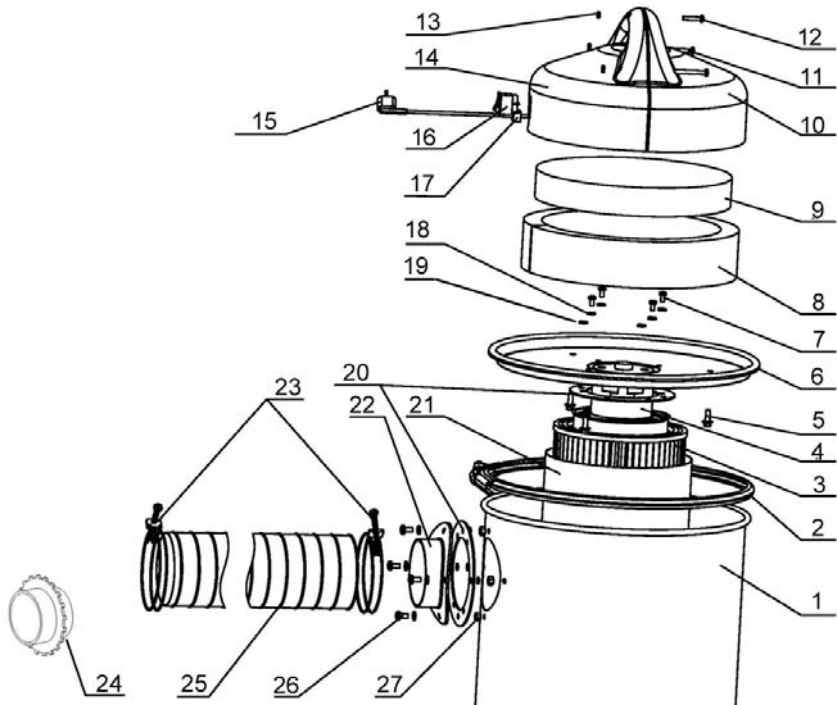
Regularly inspect the filter for damage before use and replace if necessary. Regularly check the tightness of the filter, filter bag and locking ring.

Check the power cable to ensure it is sound and free from cracks, bare wires etc. Avoid using solvents when cleaning plastic parts.

TROUBLESHOOTING

Problem	Probable cause	Suggested remedy
Motor will not run.	Defective cable, switch or motor.	Check electrical connections to all components. If unsuccessful, consult your Clarke dealer.
Excessive dust in the air.	Loose locking strap or exhaust hose. Collecting bag damaged.	Tighten connections. Replace bag.
Unexpected noise from fan/motor.	Loose components rubbing. Dust build-up inside housing.	Consult your Clarke dealer.
Machine runs but fails to reach full speed.	Low voltage. Motor damaged or worn.	Have unit repaired by your Clarke dealer.
Motor fails to develop full power.	Supply circuit overloaded. Extension lead undersize or too long.	Use different circuit. Replace extension lead.

PARTS LIST & DIAGRAM



NO	CODE	DESCRIPTION	Qty	NO	CODE	DESCRIPTION	Qty
1	WSDCE100001	Container	1	15	WSDCE100015	Power cable/plug	1
2	WSDCE100002	Locking strap	1	16	WSDCE100016	ON/OFF switch	1
3	WSDCE100003	Cartridge filter	1	17	WSDCE100017	Cable gland	1
4	WSDCE100004	Motor	1	18	WSDCE100018	5mm springwasher	1
5	WSDCE100005	Screw 5.5 x 15	1	19	WSDCE100019	5mm dia washer	1
6	WSDCE100006	Container lid	1	20	WSDCE100020	Rubber cushion	2
7	WSDCE100007	Screw 5.5 x 15	1	21	WSDCE100021	Filter bag	1
8	WSDCE100008	Long sponge	1	22	WSDCE100022	Hose coupling 1	1
9	WSDCE100009	Round sponge	1	23	WSDCE100023	Hose clamps	2
10	WSDCE100010	R/H motor casing	1	24	WSDCE100024	Hose coupling 2	1
11	WSDCE100011	Screw M5 x 45	1	25	WSDCE100025	Inlet hose	1
12	WSDCE100012	Screw M5 x 25	3	26	WSDCE100026	Screw M5 x 12	4
13	WSDCE100013	M5 nut (black)	3	27	WSDCE100027	M5 nut (white)	4
14	WSDCE100014	L/H motor casing	1				

DECLARATION OF CONFORMITY



Clarke[®]
INTERNATIONAL

Hemnall Street, Epping, Essex CM16 4LG

DECLARATION OF CONFORMITY

This is an important document and should be retained.

We hereby declare that this product(s) complies with the following directive(s):

2004/108/EC *Electromagnetic Compatibility Directive.*
2006/42/EC *Machinery Directive.*
2006/95/EC *Low Voltage Equipment Directive.*
2002/95/EC *Restriction of Hazardous substances.*

The following standards have been applied to the product(s):

*EN 60335-1:2002+A1:2004+A11:2004+A2:2006+A12:2006, EN 60335-2-69:2003+A1:2004,
EN 50366:2003+A1:2006, EN 55014-1:2000+A1:2001+A2:2002, EN 55014-2:1997+A1:2001,
EN 61000-3-2:2000+A2:2005, EN 61000-3-3:1995+A1:2001+A2:2005.*

The technical documentation required to demonstrate that the product(s) meet(s) the requirement(s) of the aforementioned directive(s) has been compiled and is available for inspection by the relevant enforcement authorities.

The CE mark was first applied in: 2007

Product Description: Dust Collector
Model number(s): CDE1000
Serial / batch Number: 6471165
Date of Issue: 27/07/2009

Signed:

J.A. Clarke
Director

A SELECTION FROM THE VAST RANGE OF

Clarke®

QUALITY PRODUCTS

AIR COMPRESSORS

From DIY to industrial, Plus air tools, spray guns and accessories.

GENERATORS

Prime duty or emergency standby for business, home and leisure.

POWER WASHERS

Hot and cold, electric and engine driven - we have what you need

WELDERS

Mig, Arc, Tig and Spot. From DIY to auto/industrial.

METALWORKING

Drills, grinders and saws for DIY and professional use.

WOODWORKING

Saws, sanders, lathes, mortisers and dust extraction.

HYDRAULICS

Cranes, body repair kits, transmission jacks for all types of workshop use.

WATER PUMPS

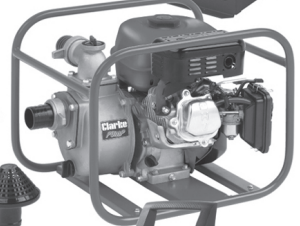
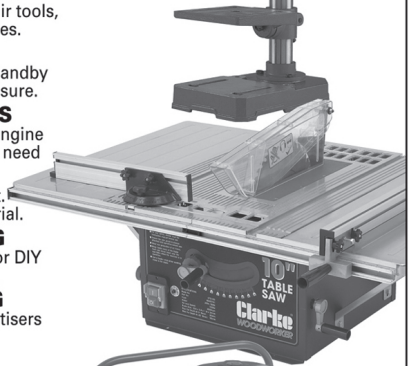
Submersible, electric and engine driven for DIY, agriculture and industry.

POWER TOOLS

Angle grinders, cordless drill sets, saws and sanders.

STARTERS/CHARGERS

All sizes for car and commercial use.



PARTS & SERVICE: 020 8988 7400

E-mail: Parts@clarkeinternational.com or Service@clarkeinternational.com

SALES: UK 01992 565333 or Export 00 44 (0)1992 565335

Clarke INTERNATIONAL Hemnall Street, Epping, Essex CM16 4LG
www.clarkeinternational.com