

ClarkeTM weld



ARC ACTIVATED HEAD SHIELD

Model No: CWH5

Part No: 6000674

Assembly and Operating Instructions



0607



Thank you for purchasing this CWH5 Arc Activated Head Shield

Before use, please read this manual thoroughly and follow all instructions. To ensure long and satisfactory service from your head shield, it should be maintained in accordance with the instructions in this manual.

GUARANTEE

This product is guaranteed against faulty manufacture for a period of 12 months from the date of purchase. Please keep your receipt as proof of purchase. This guarantee is invalid if the product is found to have been abused or tampered with in any way, or not used for the purpose for which it was intended.

Faulty goods should be returned to their place of purchase, no product can be returned without prior permission. This guarantee does not effect your statutory rights.

This guarantee does not effect your statutory rights.

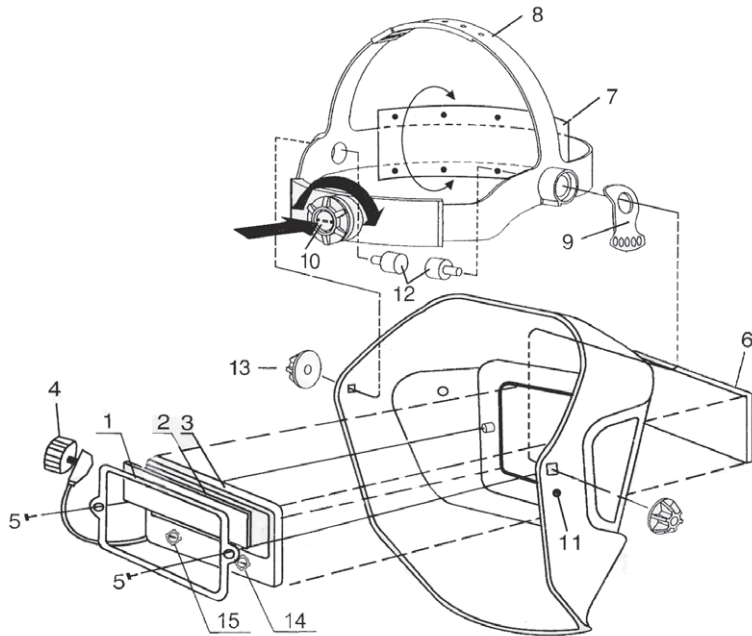
CONTENTS PAGE

Guarantee	3
Contents	3
Warnings	4
Parts list and diagram	5
Operation	6
Recommended shade setting	7
Maintenance	7

WARNINGS

- This Clarke CWH5 Arc Activated Head Shield will not protect against impact hazards, such as fractured grinding wheels or abrasive discs, explosive devices or corrosive liquids. Machine guards or eye splash protection must be used when these hazards are present.
- All Clarke Arc Activated Head Shields are designed for use in arc welding or cutting applications. This unit is suitable for all arc welding processes such as MIG, MAG, TIG, SMAW, Plasma Arc, and Carbon Arc.
- Use this Head Shield for face and eye protection against harmful rays, sparks and spatter from welding and cutting.
- The Clarke CWH5 Arc Activated Head Shield is not suitable for laser welding, laser cutting or "overhead" welding applications.
- In the event of electronic failure, the Head Shield remains protected against UV and IR radiation.
- Do not make any modifications to the Head Shield. Protection can be seriously impaired if modifications are made.

PARTS LIST AND DIAGRAM



No	Description	Part No.
1	Frame	JSCWL501
2	Inner Protection Plate	JSCWL502
3	Automatic Filter	JSCWL503
4	Shade Knob	JSCWL504
5	Fixing Screw for Frame	JSCWL505
6	Outer Protection Plate	JSCWL506
7	Sweat Band	JSCWL507
8	Headband Adjustment Button	JSCWL508
9	Angle Positioning Plate	JSCWL509
10	Headband Tightness Adjusting Knob	JSCWL510
11	Positioning Point For The Segmental Plate	JSCWL511
12	Screw For Fixing Headband	JSCWL512
13	Block Nut	JSCWL513
14	Sensitivity Knob	JSCWL514
15	Delay Knob	JSCWL515

For Spare Parts and Service, please contact your nearest dealer, or CLARKE International, on one of the following numbers.

PARTS & SERVICE TEL: 020 8988 7400

or e-mail as follows:

PARTS: parts@clarkeinternational.com

SERVICE: service@clarkeinternational.com

OPERATION

The Head Shield is supplied fully assembled and may be used straight from the box.

ADJUST HELMET TO FIT

The headband should be adjusted both in diameter and height.

The angle between face and helmet should also be adjusted and is recommended to be 10° - 12°. To do this:

- 1 Loosen the block nut on the right side of the head shield.
- 2 Change the position of the angle positioning plate.
- 3 Retighten the block nut.

SELECT THE SHADE SETTING

On striking an arc, the window will automatically darken to a preset level. You can adjust this level using the shade knob on the side of the mask.

- There are five levels available 9, 10, 11, 12 and 13, check the table on page 7 to find out what value you should select.

SELECT DELAY TIME

By rotating the delay knob on the rear of the cartridge the time taken for the lens to lighten after welding can be adjusted.

SELECT SENSITIVITY

The sensitivity to ambient light can be altered by rotating the sensitivity knob on the rear of the cartridge.

- MIN - Suitable for high amperage welding and welding in bright sunlight conditions.
- MAX - Suitable for low amperage welding and use in poor light conditions. Suitable for use with steady arc process such as Tig welding.

ON/OFF

The window will automatically darken when an arc is struck and switch off after a preset delay.

RECOMMENDED SHADE SETTINGS

Welding	CURRENT																						
	0.5	1	2.5	5	10	15	20	30	40	60	80	100	125	150	175	200	225	250	275	300	350	400	450
Covered Electrodes							9	10	11			12			13			14					
MIG on Heavy										10	11	12			13			14					
MIG Light Alloys										10	11	12	13		14	15							
TIG on all Metals					9	10	11		12	13		14											
MAG							10	11	12	13			14	15									
ARC - Air Gouging							10			11	12	13	14	15									
Plasma Jet Cutting							11		12		13												
Micro Plasma Arc	4	5	6	7	8	9	10	11	12	13		14		15									

Shade numbers according to BS 679, DIN 4647-1 and EN 169

MAINTAINENCE

Storage

The Head Shield should be stored in its box or similar place.

Cleaning

The Head Shield should be wiped with a damp cloth to remove any dust.

SPECIFICATION

Filter dimension (W x H x D)	110 x 90 x 8 mm
Viewing area (W x H)	96 X 42 mm
Light Shade Number	4
Dark Shade Number	9-13
Operating Temperature	-5°C - 55°C (23°F - 131°F)
Weight	495g
Time from light to dark	1/10000 second
Time from dark to light	0.1 - 0.9 seconds
Power Supply	Solar Cell
Usage	2 years

A SELECTION FROM THE VAST RANGE OF

Clarke®

QUALITY PRODUCTS

AIR COMPRESSORS

From DIY to industrial. Plus air tools, spray guns and accessories.

GENERATORS

Prime duty or emergency standby for business, home and leisure.

POWER WASHERS

Hot and cold, electric and engine driven - we have what you need.

WELDERS

Mig, Arc, Tig and Spot. From DIY to auto/industrial.

METALWORKING

Drills, grinders and saws for DIY and professional use.

WOODWORKING

Saws, sanders, lathes, mortises and dust extraction.

HYDRAULICS

Cranes, body repair kits, transmission jacks for all types of workshop use.

WATER PUMPS

Submersible, electric and engine driven for DIY, agriculture and industry.

POWER TOOLS

Angle grinders, cordless drill sets, saws and sanders.

STARTER/CHARGERS

All sizes for car & commercial use.



Clarke INTERNATIONAL

For spare parts and servicing, please contact your nearest dealer, or Clarke International on

020 - 8988 - 7400

e-mail: Parts@clarkeinternational.com e-mail: Service@clarkeinternational.com

Hemnal Street, Epping, Essex CM16 4LG