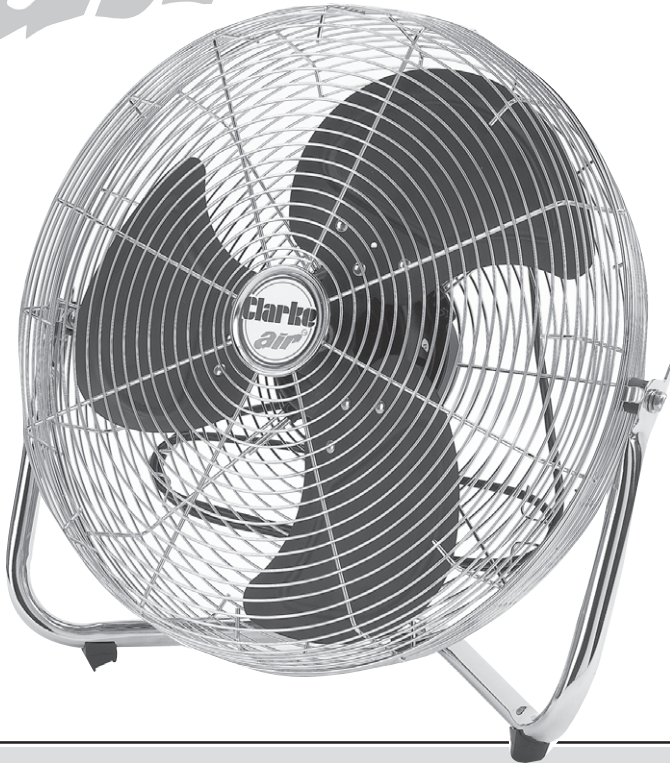


ClarkeTM

air



20" HIGH OUTPUT FAN

MODEL No: CDF20HV-B

Part No: 3231515

OPERATING & MAINTENANCE
INSTRUCTIONS



0108



Please read these instructions carefully before operating the tool

Thank you for purchasing this CLARKE 20" HIGH OUTPUT FAN.
Before using the product, please read this manual thoroughly and carefully follow all instructions given. This is for your own safety and that of others around you, and is also to help you achieve long and trouble free service from your new fan.

CLARKE GUARANTEE

This CLARKE product is guaranteed against faulty manufacture for a period of 12 months from the date of purchase. Please keep your receipt as proof of purchase.

This guarantee is invalid if the product is found to have been abused or tampered with in any way, or not used for the purpose for which it was intended.

Faulty goods should be returned to their place of purchase, no product can be returned to us without prior permission.

This guarantee does not affect your statutory rights.

PARTS & SERVICE TEL: 020 8988 7400

or e-mail as follows:

PARTS: Parts@clarkeinternational.com

SERVICE: Service@clarkeinternational.com

Please note that the details and specifications contained herein are correct at the time of going to print. However CLARKE International reserve the right to change specifications at any time without prior notice. Always consult the machines data plate

SPECIFICATIONS

This lightweight portable 230v fan is ideal for effective air movement in a wide range of domestic and commercial applications. Constructed entirely from steel, it has a three speed control, strong tilt stand and easy to carry handle.

Model:	CDF20HV-B
Part No:	3231515
Voltage:	230vac
Wattage:	150w
Speeds:	3
Dimensions (LWH):	620 x 240 x 570 mm
Weight:	6.2 kg

LIST OF CONTENTS

Before commencing assembly, check for damage and or shortages etc, any damage or shortage should be reported to your Clarke dealer where the fan was originally purchased.

- 1 x Fan Assembly
- 1 x Stand

SAFETY PRECAUTIONS

- **DO NOT** use in dusty environments.
- **DO NOT** use in environments with high fumes from chemicals etc.
- **DO NOT** use as an extractor fan.
- **DO NOT** use in areas of high humidity/water vapour, i.e. bathrooms etc.
- **DO NOT** connect fan to ducting system.

Cleaning

- Ensure the fan is switched off, then remove the plug from the socket.
- Do not use any harmful cleaning agents for cleaning.
- Only use a clean soft dampened cloth and wipe dry after cleaning.
- DO NOT bend the blades.
- The motor bearings are permanently sealed and do not require any additional lubrication.

ELECTRICAL CONNECTIONS

This product is provided with a standard 13 amp, 230 volt (50Hz), BS 1363 plug, for connection to a standard, domestic electrical supply. Should the plug need changing at any time, ensure that a plug of identical specification is used.

WARNING ! THIS APPLIANCE MUST BE EARTHED

This machine must be wired up in accordance with the following colour code:



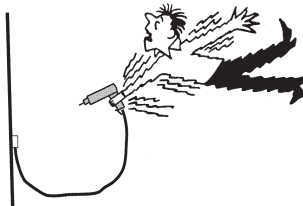
BLUE - **NEUTRAL**
BROWN - **LIVE**
GREEN/YELLOW - **EARTH**



- Connect the BLUE coloured cord to the plug terminal marked "N"
- Connect the BROWN coloured cord to the plug terminal marked "L"
- Connect the GREEN/YELLOW coloured cord to the plug terminal marked "E"

If this appliance is fitted with a plug which is moulded on to the electric cable (i.e. non-rewireable) please note:

1. The plug must be thrown away if it is cut from the electric cable. There is a danger of electric shock if it is subsequently inserted into a socket outlet.
2. Never use the plug without the fuse cover fitted.
3. Should you wish to replace a detachable fuse carrier, ensure that the correct replacement is used (as indicated by marking or colour code).
4. Replacement fuse covers can be obtained from your local dealer or most electrical stockists.



Fuse Rating

The fuse in the plug must be replaced with one of the same rating and this replacement must be approved to BS1362.

If in doubt, consult a qualified electrician. Do not attempt any electrical repairs yourself.

Cable Extension

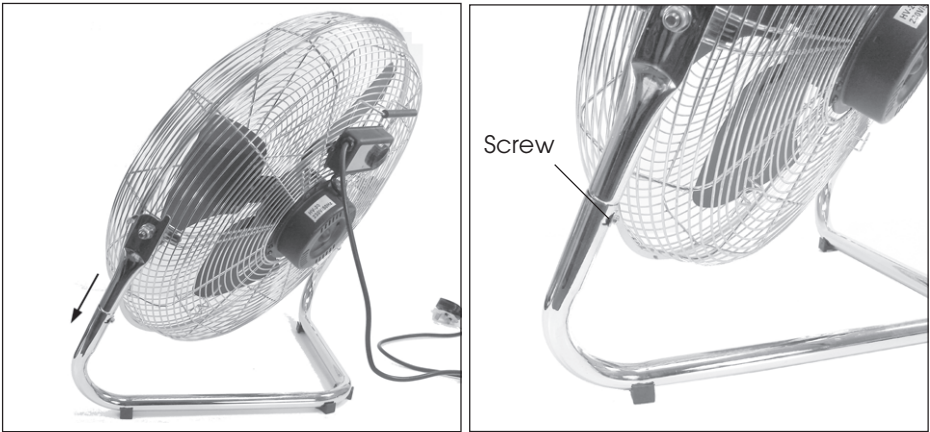
Always use an approved cable extension suitable for the power rating of this tool (see specifications), the conductor size should also be at least the same size as that on the machine, or larger. When using a cable reel, always unwind the cable completely.

IMPORTANT:

If a cable extension is needed, it is essential to comply with the following data.

Voltage	Extension length	Cable section
230v	Up to 20m	2.5mm ²
230v	From 20 to 50m	4mm ²

ASSEMBLY



1. Slide the fan assembly into the stand as shown.
2. Use the 2 screws and 2 washers supplied to fix the stand in place, one screw and washer should be used on each side of the stand.

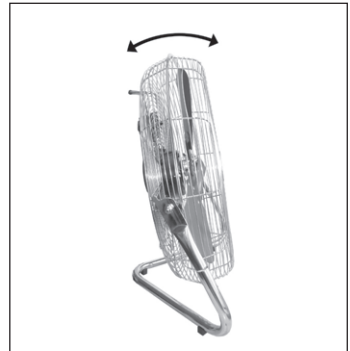
WARNING

NEVER OPERATE THE FAN WITH EITHER FRONT OR REAR GRILLS REMOVED.

OPERATION

Tilting the fan

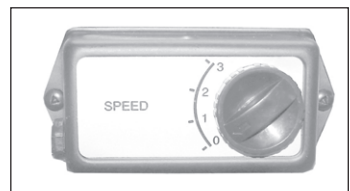
You can adjust the angle of the fan by holding the base and grill and tilting the fan to the required angle.



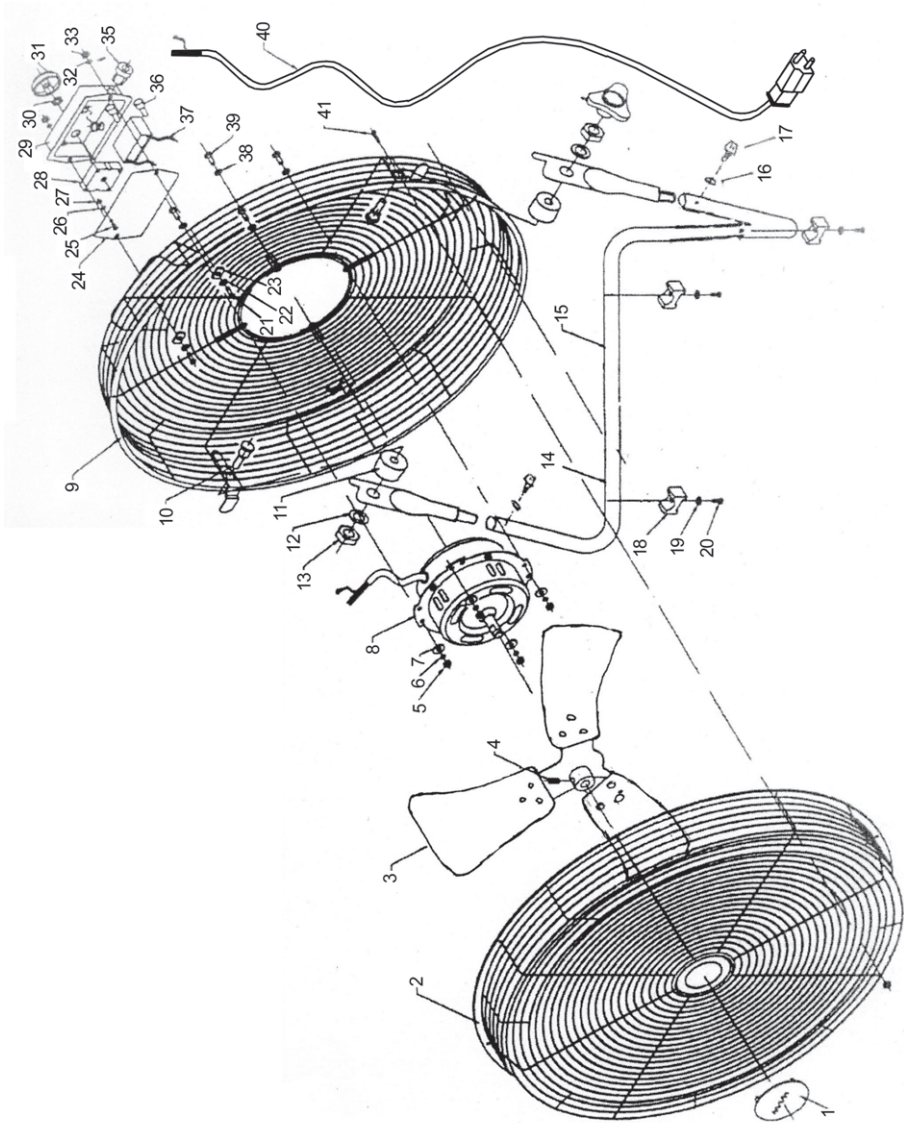
Adjusting the Speed

There are 3 speed settings available:

1. Rotate the dial to the speed you require.
2. Set the Dial to 0 to turn the fan off.



PARTS DIAGRAM



PARTS LIST

ITEM	PART NUMBER	DESCRIPTION	QTY
1	OTCDF20HVB01	BRAND NAME PLATE	1
2	OTCDF20HVB02	FRONT GRILL	1
3	OTCDF20HVB03	FAN BLADE	1
4	OTCDF20HVB04	FAN HOLDER	1
5	OTCDF20HVB05	NUT	4
6	OTCDF20HVB06	SPRING WASHER	4
7	OTCDF20HVB07	WASHER	4
8	OTCDF20HVB08	MOTOR	1
9	OTCDF20HVB09	REAR GRILL	1
10	OTCDF20HVB10	SCREW	2
11	OTCDF20HVB11	SPACER	2
12	OTCDF20HVB12	FLAT WASHER	2
13	OTCDF20HVB13	NUT	2
14	OTCDF20HVB14	STAND A	2
15	OTCDF20HVB15	STAND B	1
16	OTCDF20HVB16	WASHER	2
17	OTCDF20HVB17	SCREW	2
18	OTCDF20HVB18	FEET	3
19	OTCDF20HVB19	WASHER	3
20	OTCDF20HVB20	SCREW	3
21	OTCDF20HVB21	SCREW	2
22	OTCDF20HVB22	TOOTH WASHER	2
23	OTCDF20HVB23	WASHER	2
24	OTCDF20HVB24	SWITCH HOUSING COVER	1
25	OTCDF20HVB25	EARTH SCREW	1
26	OTCDF20HVB26	TOOTH WASHER	1
27	OTCDF20HVB27	NUT	1
28	OTCDF20HVB28	SWITCH	1
29	OTCDF20HVB29	SWITCH HOUSING	1
30	OTCDF20HVB30	NUT	1
31	OTCDF20HVB31	SWITCH KNOB	1
32	OTCDF20HVB32	SPRING WASHER	1
33	OTCDF20HVB33	NUT	1
34	OTCDF20HVB34	PROTECTION RING	1
35	OTCDF20HVB35	CABLE CLIP	1
36	OTCDF20HVB36	CONNECTOR	2
37	OTCDF20HVB37	CAPACITOR	1
38	OTCDF20HVB38	TOOTH WASHER	4
39	OTCDF20HVB39	SCREW	4
40	OTCDF20HVB40	CABLE	1
41	OTCDF20HVB41	SCREW	8

A SELECTION FROM THE VAST RANGE OF

Clarke®

QUALITY PRODUCTS

AIR COMPRESSORS

From DIY to industrial. Plus air tools, spray guns and accessories.

GENERATORS

Prime duty or emergency standby for business, home and leisure.

POWER WASHERS

Hot and cold, electric and engine driven - we have what you need.

WELDERS

Mig, Arc, Tig and Spot. From DIY to auto/industrial.

METALWORKING

Drills, grinders and saws for DIY and professional use.

WOODWORKING

Saws, sanders, lathes, mortisers and dust extraction.

HYDRAULICS

Cranes, body repair kits, transmission jacks for all types of workshop use.

WATER PUMPS

Submersible, electric and engine driven for DIY, agriculture and industry.

POWER TOOLS

Angle grinders, cordless drill sets, saws and sanders.

STARTER/CHARGERS

All sizes for car & commercial use.



Clarke INTERNATIONAL

For spare parts and servicing, please contact your nearest dealer, or Clarke International on

020 - 8988 - 7400

e-mail: Parts@clarkeinternational.com e-mail: Service@clarkeinternational.com

Hemnell Street, Epping, Essex CM16 4LG