

A SELECTION FROM THE VAST RANGE OF

Clarke®

QUALITY PRODUCTS



AIR COMPRESSORS

From DIY to industrial. Plus air tools, spray guns and accessories.

GENERATORS

Prime duty or emergency standby for business, home and leisure.

POWER WASHERS

Hot and cold, electric and engine driven - we have what you need.

WELDERS

Mig, Arc, Tig and Spot. From DIY to auto/industrial.

METALWORKING

Drills, grinders and saws for DIY and professional use.

WOODWORKING

Saws, sanders, lathes, mortisers and dust extraction.

HYDRAULICS

Cranes, body repair kits, transmission jacks for all types of workshop use.

WATER PUMPS

Submersible, electric and engine driven for DIY, agriculture and industry.

POWER TOOLS

Angle grinders, cordless drill sets, saws and sanders.

STARTER/CHARGERS

All sizes for car & commercial use.

Clarke®



DEHUMIDIFIER

MODEL NO: CD1250

Part No: 6470622

Clarke INTERNATIONAL

For spare parts and servicing, please contact your nearest dealer, or Clarke International on

020 - 8988 - 7400

e-mail: Parts@clarkeinternational.com e-mail: Service@clarkeinternational.com

Hemnal Street, Epping, Essex CM16 4LG



USER INSTRUCTIONS

SAFETY PRECAUTIONS

⚠ WARNING: ⚠

PLEASE READ ALL INSTRUCTIONS CAREFULLY BEFORE OPERATING

This appliance is intended for domestic and small office use ONLY. Any other use is not recommended by the manufacturer and may cause fire, electric shocks or other injury to person or property.

- ALWAYS keep the unit in an upright position to avoid damage to the cooling system, locate on a flat stable surface.
- DO NOT place the unit close to curtains or other objects (min. distance 0.5M).
- ALWAYS ensure that the air inlets and outlets are NOT blocked or covered.
- Operate this unit in an ambient temperature of between 5°C and 35°C.
- When using the unit to dry clothes, keep clothing a safe distance from the unit to prevent water from dropping in.
- NEVER place anything on top of the unit and DO NOT cover with any kind of material while in use.
- This product is intended for domestic and small office use ONLY and NOT for commercial, industrial or outside use.
- To protect against electric shocks, DO NOT immerse unit, plug or cord in water or spray with liquids.
- DO NOT operate the unit if the cord or plug becomes damaged, return to an authorised service facility for examination and repair.
- ALWAYS switch the unit OFF before unplugging from the mains supply, failure to do so could cause damage to the electronics in the unit.
- ALWAYS empty the water tank before storing the unit away.
- ALWAYS unplug the unit from the supply when not in use, when emptying the water tank, and when moving to a new location.
- NEVER pull the cord to disconnect the unit from the power supply, always grip the power plug and pull from the socket.
- Close supervision is necessary when any appliance is used by or near children and pets.
- DO NOT run the power cord under carpeting, or cover with rugs or runners. Arrange the cord away from areas where it may be tripped over.
- NEVER operate or store the unit in direct sunlight.
- ALWAYS take the unit to a qualified service engineer for repair. Repairs carried out by unqualified people may cause damage to the unit or injury to persons or property and invalidate the warranty.

TROUBLE SHOOTING

PROBLEM: The unit fails to run:

CAUSE:

Is the power cord unplugged or the power OFF?

Is the 'FULL' light illuminated?

Has the fuse in the mains plug blown?

TROUBLE SHOOTING:

Plug the unit in and switch the power on.

Check if the bucket is full, empty if required, check that the bucket is installed correctly.

Replace the fuse with one of the same rating.

PROBLEM: The performance seems poor:

CAUSE:

Are there any doors or windows open?

Is steam being generated in the room?

Is the room too big?

Is the room temperature or humidity low?

Is the air filter dirty?

Are the inlet or air outlets covered?

TROUBLE SHOOTING:

Clean the air filter.

Remove the obstruction. Keep a minimum distance of 0.5m between the air inlet and other objects.

PROBLEM: The unit seems noisy:

CAUSE:

Is the unit located on a flat stable surface?.

Is the air filter dirty?

TROUBLE SHOOTING:

Move the unit to a more suitable location.

Clean the air filter.

NOTE:

- This model operates within a temperature range of 5°C to 35°C. Do not operate the unit below 5°C. This could cause an accumulation of ice on the unit. If this occurs unplug the unit and move to a place where water can be drained away.
- Whenever the compressor stops there will be at least a three minute wait before it will restart, this ensures a smooth start and also helps to extend the life of the unit.
- The humidity display will differ from the true value for a period when the unit starts operating and while pausing when the bucket is full, or when the fan has stopped. The range of humidity displayed is 39% to 95%.

MAINTENANCE

CLEANING THE AIR FILTER

If the filter(s) is clogged with dust the airflow and the performance of the machine will be affected and the unit will become noisy. It is recommended that the air filter is checked and cleaned every two weeks, or more frequently in dusty conditions.

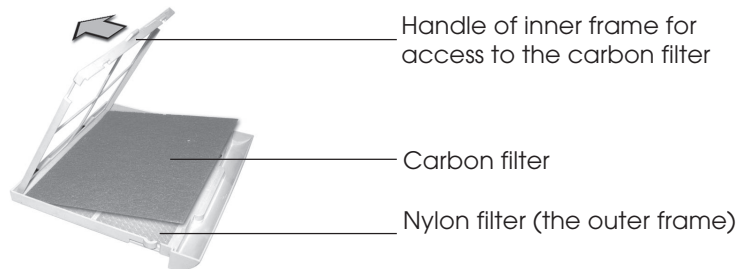
1. Turn the machine OFF and remove the filter.



2. Vacuum the nylon filter or wash it with clean water and dry it thoroughly.

NOTE: Always ensure that the nylon filter is completely dry before refitting.

NOTE: Never operate the dehumidifier without the nylon filter fitted.



3. If you have used the activated carbon filter, replace it after 3 to 6 months, when the nylon filter side has changed from white to a dark colour.
4. Never leave a dirty carbon filter in the unit or a malfunction may occur.
5. Clean the air inlet and outlet with a soft cloth or vacuum regularly.
6. Before storing the unit clean the filter, empty and dry the bucket. Store in the original packaging in a cool, dry place.

SAFETY PRECAUTIONS CONTINUED

- Where possible avoid the use of an extension cable as they may overheat and become a fire risk. Only use an extension cord after ensuring it is in perfect condition.
- DO NOT use the unit without the AIR FILTER.
- Check the household voltage to ensure it matches the units rated specification before operating.

ELECTRICAL CONNECTIONS

This product is provided with a standard 13 amp, 230 volt (50Hz) BS1363 plug, for connection to a standard, domestic electrical supply. Should the plug need replacing at any time, ensure that a plug of identical specification is used.

⚠ WARNING: ⚠

Should it ever be necessary to change the plug, the wires in the mains lead should be wired according to the following colour code:

BLUE - NEUTRAL
BROWN - LIVE
GREEN & YELLOW - EARTH

- Connect the BLUE coloured wire to the plug terminal marked with a letter 'N' or coloured BLACK.
- Connect the BROWN coloured wire to the plug terminal marked with a letter 'L' or coloured RED.
- Connect the GREEN & YELLOW coloured wire to the plug terminal marked with a letter 'E' or '⏏' or coloured GREEN or GREEN & YELLOW.

IMPORTANT!:

If this appliance is fitted with a plug which is moulded on to the electrical cable (i.e. non-rewireable) please note:

- The plug MUST be thrown away if it is cut from the electric cable. There is a danger of electric shock if it is subsequently inserted into a socket outlet.
- NEVER use the plug without the fuse cover fitted.
- Should you wish to replace a detached fuse carrier, ensure that the correct replacement is used (as indicated by marker or colour code).
- The fuse in the plug MUST be replaced with one of the same rating (**13amps**) and this must be approved to BS1362.

IMPORTANT!:

If in any doubt, DO NOT attempt any electrical repair yourself. Consult a qualified technician.

TECHNICAL SPECIFICATION

Description:

Model No: CD1250
Part No: 6470622
Use: Domestic/Small office

Product Specification:

Operating Voltage: 230V
Motor Wattage: 420W
Operating Temperature: 5°C - 35°C
Max Extraction Rate: 16 Litres/Day
Tank Capacity: 5 Litres

Dimensions & Weights:

Product: (length x width x height) 300 x 348 x 586mm
Weight: 20Kg (gross) 18Kg (nett)

Clarke[®]
INTERNATIONAL

SETUP AND OPERATION CONTINUED

SAFE OPERATION

1. NEVER insert small objects into the unit as this will damage it and cause a hazard.



2. Keep the area around the air intake clear from obstruction minimum 0.5m.



RELOCATING THE UNIT

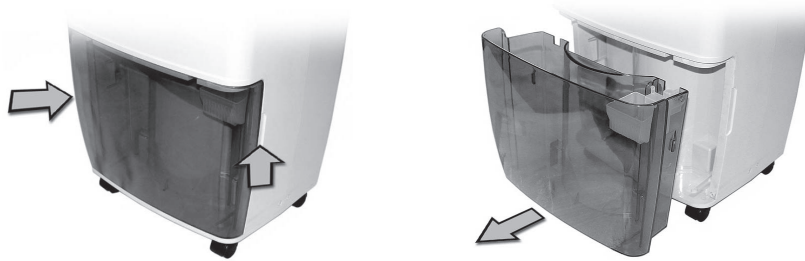
1. Casters are fitted to the unit to allow it to be easily moved.
2. ALWAYS turn OFF and unplug from the mains supply before moving.
3. Empty the water bucket to avoid spillages.
4. Once the unit has been moved, before switching ON ensure that the dehumidifier is located on a flat, stable surface and that the bucket is correctly installed.

Clarke[®]
INTERNATIONAL

SETUP AND OPERATION CONTINUED

BUCKET EMPTYING

1. When the bucket is full the 'FULL' light will blink. The machine will also beep three times.
2. Wait a few minutes to allow the machine to stop operating before removing the bucket.
3. To remove the bucket, grip each side and lever out, carefully lift and pour the water away, then replace back into the correct position.



CONTINUOUS WATER DRAIN

For continuous water drainage use a hose with an inner diameter of 12.7mm (½ inch).

1. Use a screw driver to carefully remove the knock out at the back of the unit.
2. Attach the hose to the connector through the hole.
3. The hose should be lead to the drain with no sharp bends.



PARTS DESCRIPTION

FRONT VIEW



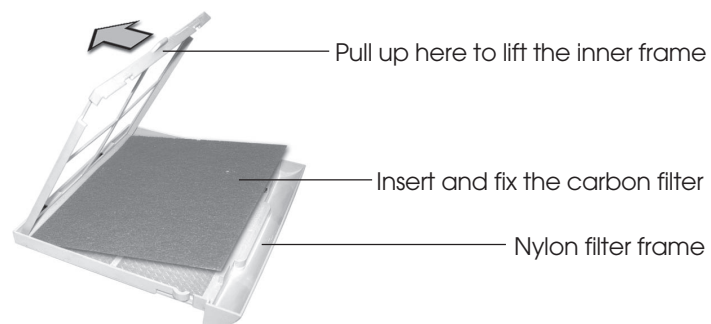
REAR VIEW



SETUP AND OPERATION

1. ACTIVATED CARBON FILTER:

To use an activated carbon filter, pull the filter frame out from the back of the machine. Unpack the carbon filter, fit into the frame and refit.



2. AIR OUTLET:

Open and adjust the multidirectional air flap BEFORE operating the unit. Not doing this will cause the machine to malfunction. The air flap can be adjusted to direct the air flow upwards or forwards.

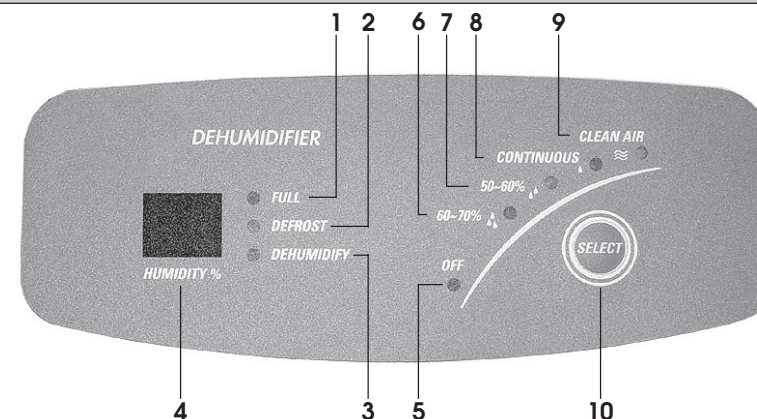


3. BUCKET:

Before operating the dehumidifier make sure the bucket is correctly fitted, if the bucket is full or incorrectly fitted the FULL light will blink and the machine will stop. If you prefer to have continuous water drainage follow the instructions on page 8 on how to set this up.

SETUP AND OPERATION CONTINUED

CONTROL PANEL



1. If the unit has been stored or moved laying down leave it to stand in an upright position for two hours before operating.
2. Insert the mains plug into a power socket, the 'OFF' light (5) illuminates.
3. Press the 'SELECT' key (10) to select the operating mode (6) - (9) in sequence.
4. To turn the dehumidifier OFF press the 'SELECT' key (10) until OFF (5) is illuminated. Unplug the unit from the power socket if it isn't going to be used for a long period of time.

INDICATOR LIGHTS:

- | | |
|----------------|---|
| (1) FULL | Blinks when the bucket is full or incorrectly fitted. |
| (2) DEFROST | Blinks when defrosting. The unit will auto-return to dehumidification mode once the defrost cycle is complete. |
| (3) DEHUMIDIFY | Illuminates when the compressor (dehumidifying function) is ON to indicate the unit is running in the normal dehumidification mode. |
| (4) HUMIDITY % | Displays the relative humidity. |

MODES:

- | | |
|----------------|---|
| (5) OFF | Stops the machine. |
| (6) 60 - 70% | Automatically maintains humidity between 60% and 70%. |
| (7) 50 - 60% | Automatically maintains humidity between 50% and 60%. |
| (8) CONTINUOUS | Continuous dehumidification. |
| (9) CLEAN AIR | No dehumidification, fan runs to clean air through the filters. |

NOTE: Whenever the compressor stops there will be at least a 3 minute wait before it will restart, even if you select a different mode. This ensures a smooth start and also helps to extend the life of the unit.

NOTE: This unit operates within an ambient temperature of 5°C to 35°C.