

Clanlike®

STRONG-ARM



2 TONNE TROLLEY JACK

Model No: CTJ2000LP

PART NO: 7623065

OPERATING & MAINTENANCE INSTRUCTIONS



INTRODUCTION

Thank you for purchasing this CLARKE Trolley Jack.

Before attempting to use this product, please read this manual throughout and follow the instructions carefully. Thoroughly familiarise yourself with this product & its operation in order to ensure the safety of yourself and others around you. In doing so, you can look forward to the product giving you long and satisfactory service.

GUARANTEE

This product is guaranteed against faulty manufacture for a period of 12 months from the date of purchase. Please keep your receipt which will be required as proof of purchase. This guarantee is invalid if the product is found to have been abused or tampered with in any way, or not used for its intended purpose.

Faulty goods should be returned to their place of purchase, no product can be returned to us without prior permission. This guarantee does not effect your statutory rights.

SPECIFICATION

Feature	Specification
Part Number	7623065
Weight	10.9 kg
Dimensions (L x W x H) without handle	528 x 215 x 130 mm
Rated Load	2 tonne
Min Height of Saddle	80 mm
Max Height of Saddle	330 mm
Oil Capacity	105 ml
No of Strokes from Min to Max Height	34
Distance Raised per Stroke	7.3 mm (average)

Please note that details and specifications contained herein, are correct at the time of going to print. However, CLARKE International reserve the right to change specifications at any time without prior notice.

GENERAL SAFETY PRECAUTIONS

GENERAL

1. ALWAYS read and ensure you fully understand the following precautions and the hazards associated with this product. Do not allow anyone who has not read these instructions to use the jack.
2. Only use this jack for its intended purpose.
3. NEVER carry out any modifications to this product. If experiencing difficulty of any kind consult your local dealer.

WORK AREA

1. NEVER use the jack on sloping surfaces, only on level ground. The jack may move away slightly as soon as it lifts the tyre from the ground.
2. DO NOT start the vehicle engine with the jack in use.
3. This jack is for lifting ONLY. DO NOT move a load using the jack as a dolly.
4. Ensure the load is taken by the full saddle and that the point of lift on the load is of sufficient strength to support the full load adequately.
5. Never allow children or bystanders in the area while the jack is in use.
6. NEVER work underneath a vehicle supported only by this product. If working under a vehicle, always use stands designed for the purpose.
7. Ensure the jack is on a firm solid base and that there is no likelihood of it slipping when under load.
8. Ensure that all personnel are well clear of a load being raised or lowered.

SERVICING & REPAIRS

1. Check the jack for damage before use and do not use if damaged. If in doubt, DO NOT use. Consult your local dealer.
2. ALWAYS use spare parts supplied by Clarke International. Using non-standard parts could be extremely dangerous.
3. Ensure the jack is properly maintained at all times and that no damage is allowed to weaken any part of it. Do not use if an oil leak is apparent.
4. When necessary, have your jack serviced or repaired by a qualified technician using identical replacement parts. This will ensure that the safety of the jack is maintained.
5. NEVER exceed the rated load or use the jack if it has been subjected to excess load (over 2 tonne). The jack should be removed from service immediately and fully inspected by qualified personnel and passed as serviceable before further use.

Please keep these instructions in a safe place for future reference.

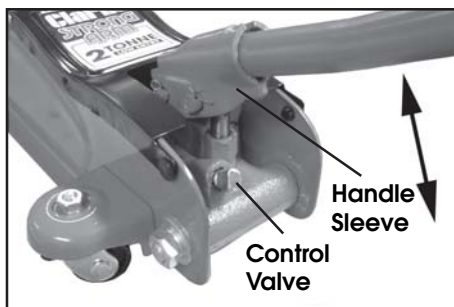
OPERATION

Before use, visually inspect the jack for oil leaks or any other sign of damage. Should any be apparent, have the jack inspected and repaired by a qualified technician before use.



WARNING! NEVER WORK ON THE VEHICLE WHEN SUPPORTED ONLY BY A JACK. THIS IS A HIGHLY DANGEROUS PRACTICE. THE VEHICLE MUST BE SUPPORTED ON AXLE STANDS, OR SUITABLE SUPPORTS, BENEATH THE JACKING/SUPPORT POINTS RECOMMENDED BY THE VEHICLE MANUFACTURER. THERE SHOULD BE NO LOAD ON THE JACK.

1. Ensure the vehicle to be raised is chocked, stable & on firm level ground with the supporting wheels adequately chocked.
2. Position the jack so that the saddle is directly beneath the lifting point.
 - Consult the vehicle handbook to determine suitable lifting points.
3. Place the handle over the control valve & turn clockwise to shut the valve
4. Insert the handle into the handle sleeve and pump the handle to raise the saddle until it reaches the vehicle lifting point.
5. Take care that there are no obstructions to prevent a clean lift. Keep all personnel at a safe distance before pumping the handle to raise the vehicle.



NOTE: The jack may move slightly during operation. It is important therefore, that the floor is clean and completely free from debris.

6. Position axle stands directly beneath suitable supporting points below the vehicle, before engaging the handle with the control valve and very gently twisting the handle anticlockwise.
 - This will open the control valve to lower the load onto the stands.
7. To stop it lowering, turn the handle clockwise again. Always avoid a rapid descent by turning the handle slowly.
8. Carefully lower the vehicle onto the axle stand, checking constantly, preferably with an assistant, that the vehicles supporting point rests snugly and cleanly on the stand, and that the supporting stand is stable before all the weight is taken.

NOTE: Ensure this operation is carried out under complete control. DO NOT allow the load to drop suddenly as this could damage internal parts.

9. Completely remove the jack from the vehicle.

MAINTENANCE

PURGING AIR FROM THE SYSTEM

If air bubbles become trapped inside the hydraulic system, the efficiency of the jack will be reduced. Any air can be purged from the system as follows.

1. Turn the control valve counter-clockwise and remove the filler plug.
2. Pump the handle several times to purge air from the system.
3. Replace the filler plug, then turn the control valve clockwise and test the jack. If efficiency is still low, check the oil level as below.

CHECKING THE OIL LEVEL

If the jack has been stored for long periods, check for oil leaks before use. If necessary, check the oil level as follows:

1. Ensure the jack is fully lowered by using the handle to turn the control valve fully anticlockwise.
2. Lift up the cover plate and remove the oil filler plug on the top of the ram assembly. A large cross headed screwdriver is required.
 - The oil should be almost level with the bottom of the oil filler hole.
 - Oil can be topped up using Clarke Hydraulic Oil (p/no 3050830 for 1 litre).

OIL REPLACEMENT

1. With the jack lowered, remove the filler plug. Tilt the jack onto its side and drain the old oil into a container.
2. Return the jack to upright and refill with hydraulic oil up to the lower rim of the filler hole.
3. Purge any air from the system and replace the filler plug.
4. Dispose of old oil appropriately and be sure to wipe up any spillage.

GENERAL CARE

1. Periodically lubricate the hinges, front wheels & rear castors with light oil.
2. Store in a dry location with the arm in its lowest position.
3. In the event of damage or broken components, replacements are available from Clarke Parts & Service.

TROUBLESHOOTING

PROBLEM	CAUSE	SOLUTION
Jack will not raise to the full height.	Low oil level.	Check for leakage and top up if required via the oil plug.
	Air in system.	Remove filler plug and pump handle to purge air from system as described on page 5.
	O-rings worn.	Return to your Clarke dealer for overhaul.
Jack will not hold the load.	Release valve not tightly closed.	Check valve is closing fully.
	Release valve not seating.	Return to your Clarke dealer for overhaul.
	Air in system.	Remove filler plug and pump handle to purge air from system as described on page 5.
Jack does not lower when valve opened.	Cylinder over-filled with oil.	Drain off excessive oil.
	Piston or pivot arm bent or binding.	Return to your Clarke dealer for repair.
	Disconnected or broken return spring.	Return to your Clarke dealer for repair.
	Hinged components not moving freely.	Lubricate hinged joints.
Jack feels spongy when lifting.	Air trapped in system.	Remove filler plug and pump handle to purge air from system as described on page 5.

ENVIRONMENTAL PROTECTION



One of the most damaging sources of environmental pollution is oil products. Never throw away used hydraulic oil with domestic refuse or flush it down a sink or drain. Collect all the hydraulic oil in a leak proof container and take it to your local waste disposal site.

DECLARATION OF CONFORMITY



Clarke[®]
INTERNATIONAL

Hernnall Street, Epping, Essex CM16 4LG

DECLARATION OF CONFORMITY

This is an important document and should be retained.

We hereby declare that this product(s) complies with the following directive(s):

2006/42/EC Machinery Directive.

The following standards have been applied to the product(s):

BS EN 1494/A1:2008

The technical documentation required to demonstrate that the product(s) meet(s) the requirement(s) of the aforementioned directive(s) has been compiled and is available for inspection by the relevant enforcement authorities.

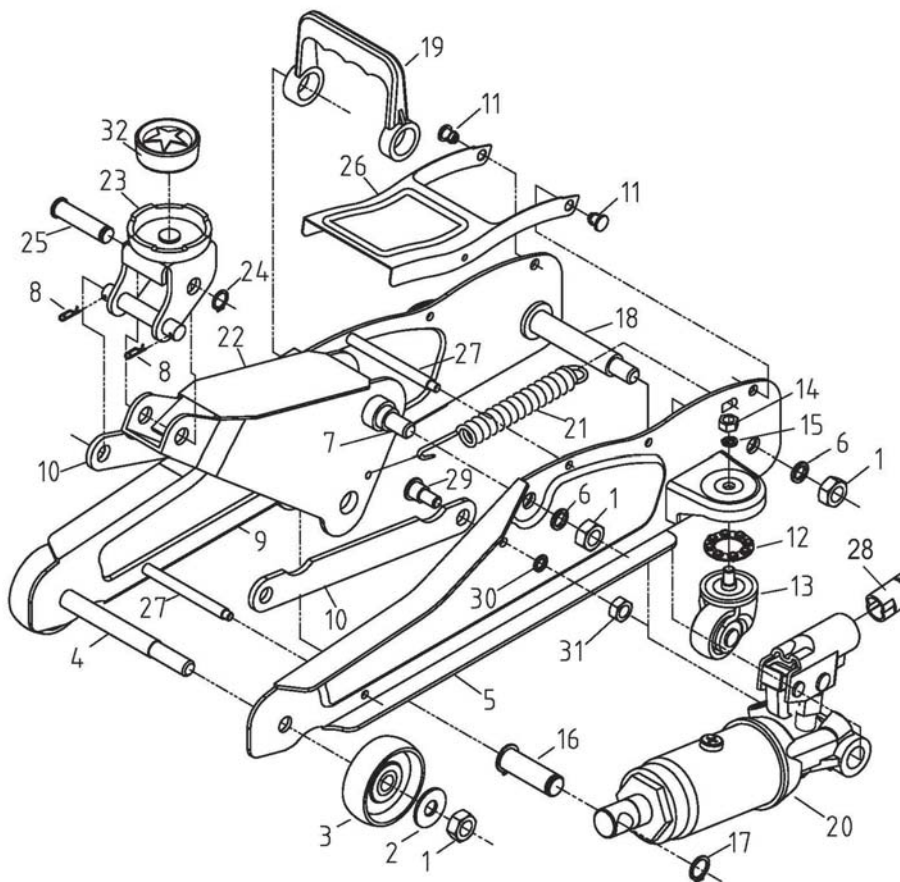
The CE mark was first applied in: 2006

Product Description:	2 Tonne Low Profile Trolley Jack.
Model number(s):	CTJ2000LP
Serial / batch Number:	N/A
Date of Issue:	28/10/2011

Signed:

J.A. Clarke
Director

COMPONENT PARTS



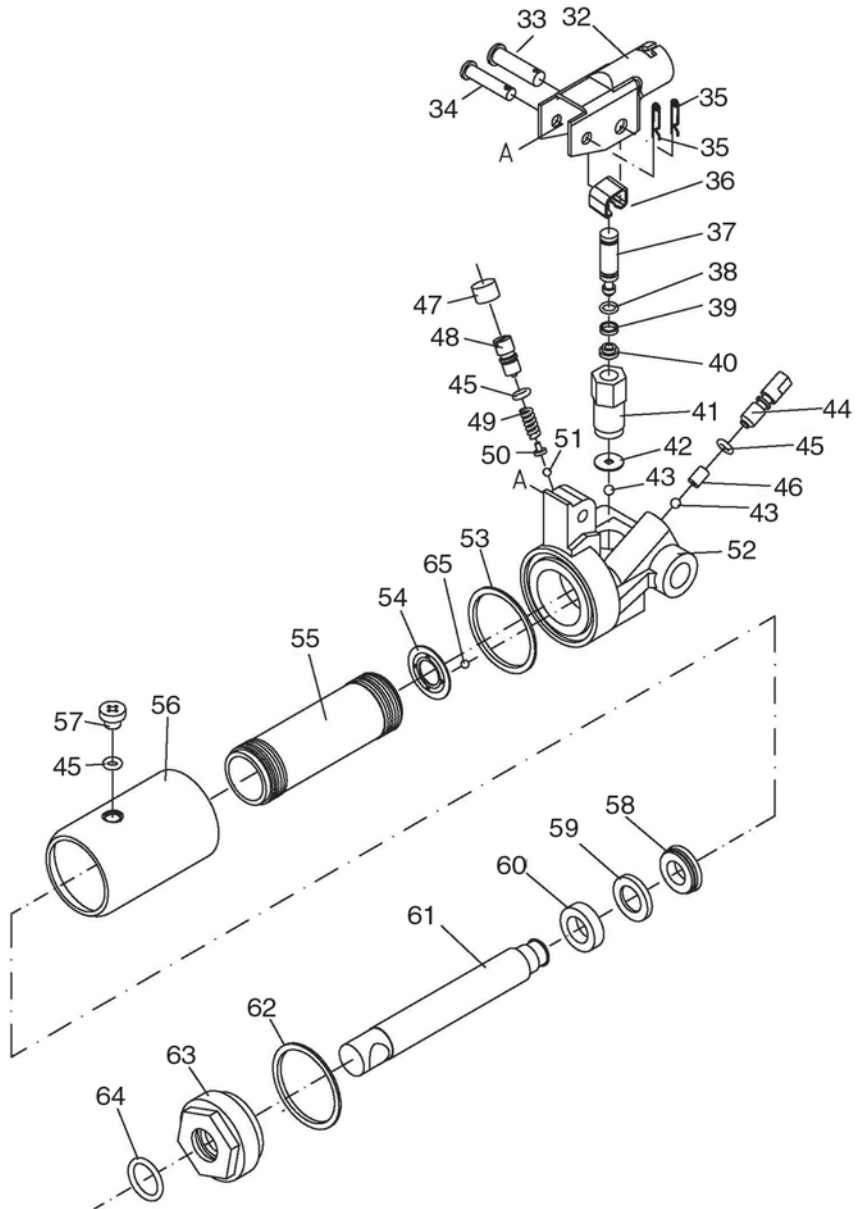
No	Parts List	Part No
1	Nut M12	TACTJ2000LP01
2	Flat Washer	TACTJ2000LP02
3	Front Wheel	TACTJ2000LP03
4	Front Axle	TACTJ2000LP04
5	Left-hand Frame	TACTJ2000LP05
6	Spring Washer No12	TACTJ2000LP06

No	Description	Part No
7	Lifting Arm Pivot	TACTJ2000LP07
8	Retaining Clip	TACTJ2000LP08
9	Right-hand Frame	TACTJ2000LP09
10	Connecting Rod	TACTJ2000LP10
11	Arm Clips	TACTJ2000LP11
12	Ball Race	TACTJ2000LP12

COMPONENT PARTS

No	Parts List	Part No	No	Description	Part No
13	Rear Castor	TACTJ2000LP13	40	U-Seal	TACTJ2000LP40
14	Nut M8	TACTJ2000LP14	41	Pump Cylinder	TACTJ2000LP41
15	Spring Washer 8mm	TACTJ2000LP15	42	Washer	TACTJ2000LP42
16	Ram Connecting Pin	TACTJ2000LP16	43	Steel Ball	TACTJ2000LP43
17	Circlip	TACTJ2000LP17	44	Control Valve Screw	TACTJ2000LP44
18	Main Axle	TACTJ2000LP18	45	O-Ring 6x3	TACTJ2000LP45
19	Carrying Handle	TACTJ2000LP19	46	Control Valve Peg	TACTJ2000LP46
20	Ram Assembly	TACTJ2000LP20	47	Safety Valve Cap	TACTJ2000LP47
21	Return Spring	TACTJ2000LP21	48	Safety Valve Screw	TACTJ2000LP48
22	Lifting Arm	TACTJ2000LP22	49	Safety Valve Spring	TACTJ2000LP49
23	Saddle	TACTJ2000LP23	50	Safety Valve Plunger	TACTJ2000LP50
24	Circlip	TACTJ2000LP24	51	Steel Ball 4mm	TACTJ2000LP51
25	Saddle Pivot	TACTJ2000LP25	52	Ram Body Casting	TACTJ2000LP52
26	Cover Plate	TACTJ2000LP26	53	Nylon Washer	TACTJ2000LP53
27	Tie Rod	TACTJ2000LP27	54	Ram Washer	TACTJ2000LP54
28	Operating Handle	TACTJ2000LP28	55	Ram Cylinder	TACTJ2000LP55
29	Lower Pivot Pin	TACTJ2000LP29	56	Oil Reservoir	TACTJ2000LP56
30	Washer	TACTJ2000LP30	57	Oil Filler Cap	TACTJ2000LP57
31	Nut	TACTJ2000LP31	58	U-Seal	TACTJ2000LP58
32	Handle Mounting	TACTJ2000LP32	59	O-Ring Retainer	TACTJ2000LP59
33	Pump Piston Hinge	TACTJ2000LP33	60	Securing Ring	TACTJ2000LP60
34	Handle Mounting Pin	TACTJ2000LP34	61	Ram Piston	TACTJ2000LP61
35	Split Pin	TACTJ2000LP35	62	Nylon Washer	TACTJ2000LP62
36	Piston Fixing Clip	TACTJ2000LP36	63	Reservoir End Cap	TACTJ2000LP63
37	Pump Piston	TACTJ2000LP37	64	O-Ring 21.7x3	TACTJ2000LP64
38	O-Ring 7.8x1.9	TACTJ2000LP38	65	Steel Ball 3/16"	TACTJ2000LP65
39	Back-up Ring	TACTJ2000LP39	---	Hydraulic Seal Kit	TACTJ2000LP66

COMPONENT PARTS



NOTES

A SELECTION FROM THE VAST RANGE OF

Clarke®

QUALITY PRODUCTS



AIR COMPRESSORS
From DIY to industrial, Plus air tools, spray guns and accessories.

GENERATORS
Prime duty or emergency standby for business, home and leisure.

POWER WASHERS
Hot and cold, electric and engine driven - we have what you need

WELDERS
Mig, Arc, Tig and Spot. From DIY to auto/industrial.

METALWORKING
Drills, grinders and saws for DIY and professional use.

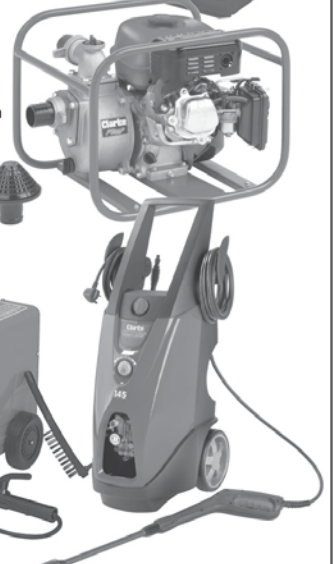
WOODWORKING
Saws, sanders, lathes, mortisers and dust extraction.

HYDRAULICS
Cranes, body repair kits, transmission jacks for all types of workshop use.

WATER PUMPS
Submersible, electric and engine driven for DIY, agriculture and industry.

POWER TOOLS
Angle grinders, cordless drill sets, saws and sanders.

STARTERS/CHARGERS
All sizes for car and commercial use.



PARTS & SERVICE: 020 8988 7400

E-mail: Parts@clarkeinternational.com or Service@clarkeinternational.com

SALES: UK 01992 565333 or Export 00 44 (0)1992 565335

Clarke INTERNATIONAL Hemnall Street, Epping, Essex CM16 4LG
www.clarkeinternational.com