

Clanorke®

STRONG-ARM



2 TONNE ALUMINIUM QUICK-LIFT GARAGE JACK

Model No: CTJ2000A

PART NO: 7623060

OPERATING & MAINTENANCE INSTRUCTIONS



INTRODUCTION

Thank you for purchasing this CLARKE Garage Trolley Jack.

Before attempting to use this product, please read this manual throughout and follow the instructions carefully. Thoroughly familiarise yourself with this product & its operation in order to ensure the safety of yourself and others around you. In so doing, you can look forward to the product giving you long and satisfactory service.

GUARANTEE

This product is guaranteed against faulty manufacture for a period of 12 months from the date of purchase. Please keep your receipt which will be required as proof of purchase. This guarantee is invalid if the product is found to have been abused or tampered with in any way, or not used for its intended purpose.

Faulty goods should be returned to their place of purchase, no product can be returned to us without prior permission. This guarantee does not effect your statutory rights.

SPECIFICATION

CTJ2000A	
Part Number	7623060
Weight	19.7 kg
Dimensions (L x W x H)	630 x 300 x 240 mm (without handle)
Rated Load	2000 kg
Min Height of Saddle	90 mm
Max Height of Saddle	450 mm
Oil Capacity	145 ml
No of Strokes from Min to Max Height	6
Quick Lift	Dual Pump Quick Lift
Distance Raised per Stroke	60 mm (average)

Please note that details and specifications contained herein, are correct at the time of going to print. However, CLARKE International reserve the right to change specifications at any time without prior notice.

GENERAL SAFETY PRECAUTIONS

GENERAL

1. ALWAYS read and ensure you fully understand the following precautions and the hazards associated with this product. Do not allow anyone who has not read these instructions to use the jack.
2. Only use this jack for its intended purpose.
3. NEVER carry out any modifications to this product. If experiencing difficulty of any kind consult your local dealer.

WORK AREA

1. NEVER use the jack on sloping surfaces, only on level ground. The jack may move away slightly as soon as the tyre leaves the ground.
2. DO NOT start the vehicle engine with the jack in use.
3. This jack is for lifting only. Do not move a load using the jack as a dolly.
4. Ensure the load is taken by the full saddle and that the point of lift on the vehicle is strong enough to support the full weight adequately.
5. Never allow children or bystanders in the area while the jack is in use.
6. NEVER work underneath a vehicle supported only by this jack. If working under a vehicle, always use stands designed for the purpose.
7. Ensure the jack is on a firm solid base and that there is no likelihood of it slipping when under load.
8. Ensure that all personnel are well clear of a load being raised or lowered.

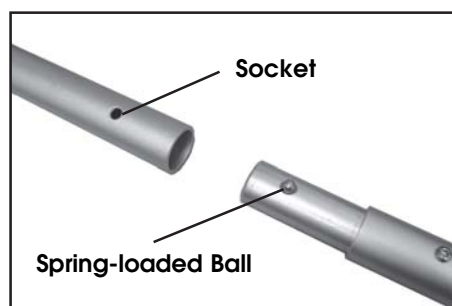
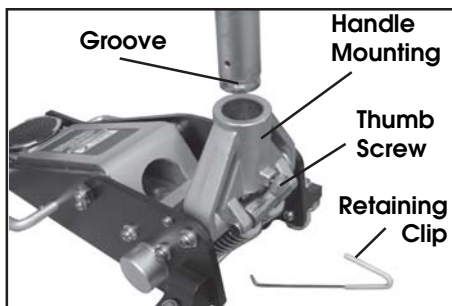
SERVICING & REPAIRS

1. Check the jack for damage before use and do not use if damaged. If in doubt, DO NOT use. Consult your local Clarke dealer.
2. ALWAYS use spare parts supplied by Clarke International. Using non-standard parts could be extremely dangerous.
3. Ensure that the jack is properly maintained at all times and that no corrosion or other damage is allowed to weaken any part of it.
4. When necessary, have your jack serviced or repaired by a qualified technician using identical replacement parts. This will ensure that the safety of the jack is maintained.
5. NEVER use the jack if it has been subjected to excess load (over 2000 kg). The jack should be removed from service immediately and fully inspected by qualified personnel and passed as serviceable before further use.

Please keep these instructions in a safe place for future reference.

UNPACKING AND ASSEMBLY

1. Remove the retaining clip, by pressing the handle mounting downwards and releasing the clip from the base of the jack and from the handle opening.
2. Undo the thumbscrew until the lower handle can be inserted fully into the handle socket.
 - The handle has a groove which should engage with the thumb screw once it is re-tightened.
3. Re-tighten the thumb screw to secure the lower handle.
4. Add the upper handle by pushing it onto the lower handle until the ball and socket of the handle sections snap together.



OPERATION

Before use, visually inspect the jack for oil leaks or any other sign of damage. Should any be apparent, have the jack inspected and repaired by a qualified technician before use.

Ensure the vehicle to be raised is chocked and standing on firm, level ground before manoeuvring the jack so that the saddle is directly beneath the lifting point. Consult the vehicle handbook to determine the suitable lifting points.

USING THE JACK

1. Turn the handle fully clockwise to close the release valve, and pump the handle to raise the saddle until it reaches the vehicle lifting point.
2. Ensure that the saddle is directly below the lifting point and there are no obstructions to prevent a clean lift. Keep all personnel at a safe distance before continuing to pump the handle to raise the vehicle.

NOTE: The jack may move slightly during operation. It is important therefore, that the floor is clean and completely free from debris.

3. Position axle stands directly beneath suitable supporting points under the vehicle, before **very gently** twisting the handle anticlockwise.
 - This will open the release valve to lower the vehicle onto the stands. To stop it lowering, turn the handle clockwise again. Always avoid a rapid descent by turning the handle **slowly**.
4. Carefully lower the vehicle onto the axle stand, checking constantly, preferably with an assistant, that the vehicles supporting point rests snugly and cleanly on the axle stand, and that the stand is stable before all the weight is taken.

NOTE: Ensure this operation is carried out under complete control. Do not allow the load to drop suddenly as this could damage internal components.

5. Completely remove the jack from the vehicle.



WARNING! NEVER WORK ON THE VEHICLE WHEN SUPPORTED ONLY BY A JACK. THIS IS A HIGHLY DANGEROUS PRACTICE. THE VEHICLE MUST BE SUPPORTED ON AXLE STANDS, OR SUITABLE SUPPORTS, BENEATH THE JACKING/SUPPORT POINTS RECOMMENDED BY THE VEHICLE MANUFACTURER. THERE SHOULD BE NO LOAD ON THE JACK.

MAINTENANCE

CHECKING THE OIL LEVEL

If the jack has been stored for long periods, check for oil leaks before use. If necessary, check the oil level as follows:

1. Ensure the jack is fully lowered by turning the handle fully anticlockwise.
2. Remove the oil filler plug on the top of the ram assembly (item 32 on page 9). A broad-bladed screwdriver is required.
 - The oil should be almost level with the bottom of the oil filler hole.
 - Oil can be topped up using Clarke Hydraulic Oil:
Part No. 3050830 for 1 litre.

OIL REPLACEMENT

1. With the jack lowered, remove the filler plug as above. Tilt the jack onto its side and drain the old oil into a container.
2. Return the jack upright and re-fill with hydraulic oil up to the lower rim of the filler hole.
3. Purge any air from the system as described on the following page. Replace the filler plug.
4. Dispose of old oil appropriately and be sure to wipe up any spillage.

PURGING AIR FROM THE SYSTEM

If air bubbles become trapped inside the hydraulic system, the efficiency of the jack will be reduced and it may not fully support the vehicle weight. Any air can be purged from the system as follows.

1. Turn the handle 1.5 turns counter-clockwise to allow oil to circulate freely around the system. Remove the filler plug.
2. Pump the handle several times to purge air from the system.
3. Replace the filler plug, then turn the handle clockwise and test the jack. If efficiency is still low, check the oil level as on page 5.

GENERAL CARE

1. Periodically lubricate the hinges, front roller and rear castors with a light oil.
2. Store in a dry location with the arm in its lowest position.
3. In the event of damage or broken components, replacements are available from Clarke Parts & Service.

TROUBLESHOOTING

PROBLEM	CAUSE	SOLUTION
Jack will not raise to the full height.	Low oil level.	Check for leakage and top up if required via the oil plug.
	Air in cylinder.	Pump handle to purge air from system.
	O-rings worn.	Return to your Clarke dealer for overhaul.
Jack will not hold the load.	Release valve not tightly closed.	Check valve is closing fully.
	Release valve not seating.	Return to your Clarke dealer for overhaul.
	Air in cylinder.	Pump handle to purge air from system.
Jack does not lower when the valve is opened.	Cylinder overfilled with oil.	Drain off excessive oil.
	Piston or pivot arm bent or binding.	Return to your Clarke dealer for repair.
	Disconnected or broken return spring.	Return to your Clarke dealer for repair.
	Hinged components not moving freely.	Lubricate hinged joints.
Jack feels spongy when lifting.	Air trapped in system.	Pump handle to purge air from system.

ENVIRONMENTAL PROTECTION



One of the most damaging sources of environmental pollution is oil products. Never throw away used hydraulic oil with domestic refuse or flush it down a sink or drain. Collect all the hydraulic oil in a leak proof container and take it to your local waste disposal site.

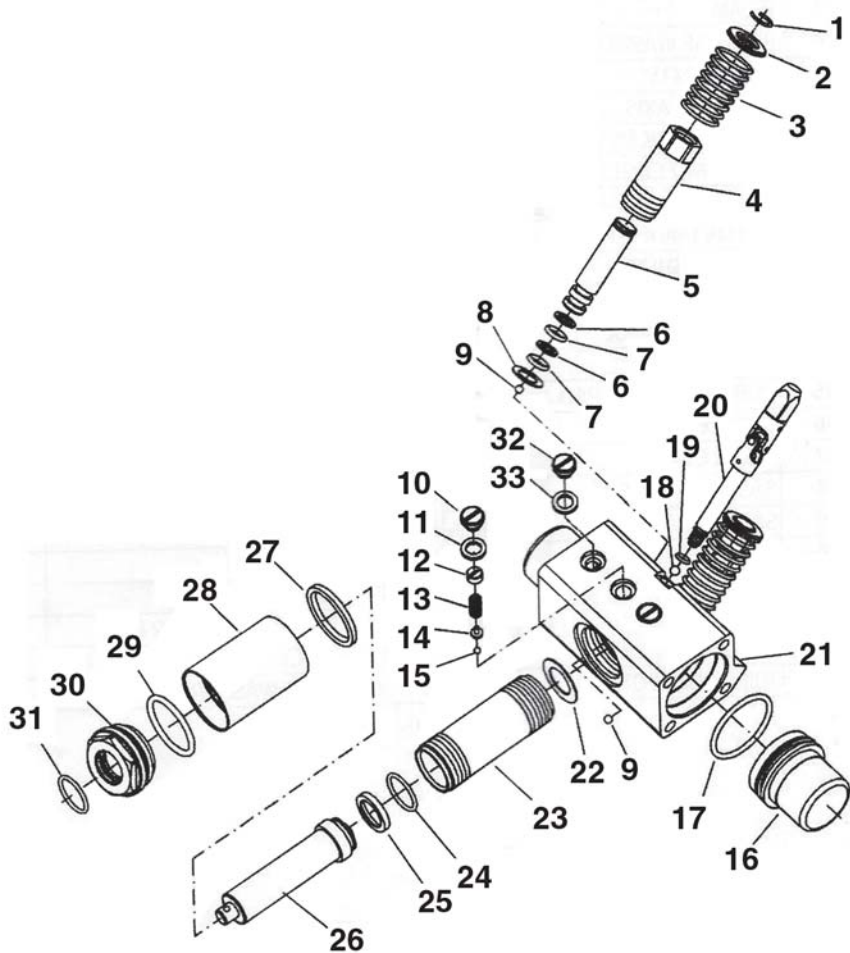
If disposing of this product or any damaged components, do not dispose of with general waste. This product contains valuable raw materials and should be taken to your local civic amenity site for recycling of metal products.

RAM COMPONENT PARTS

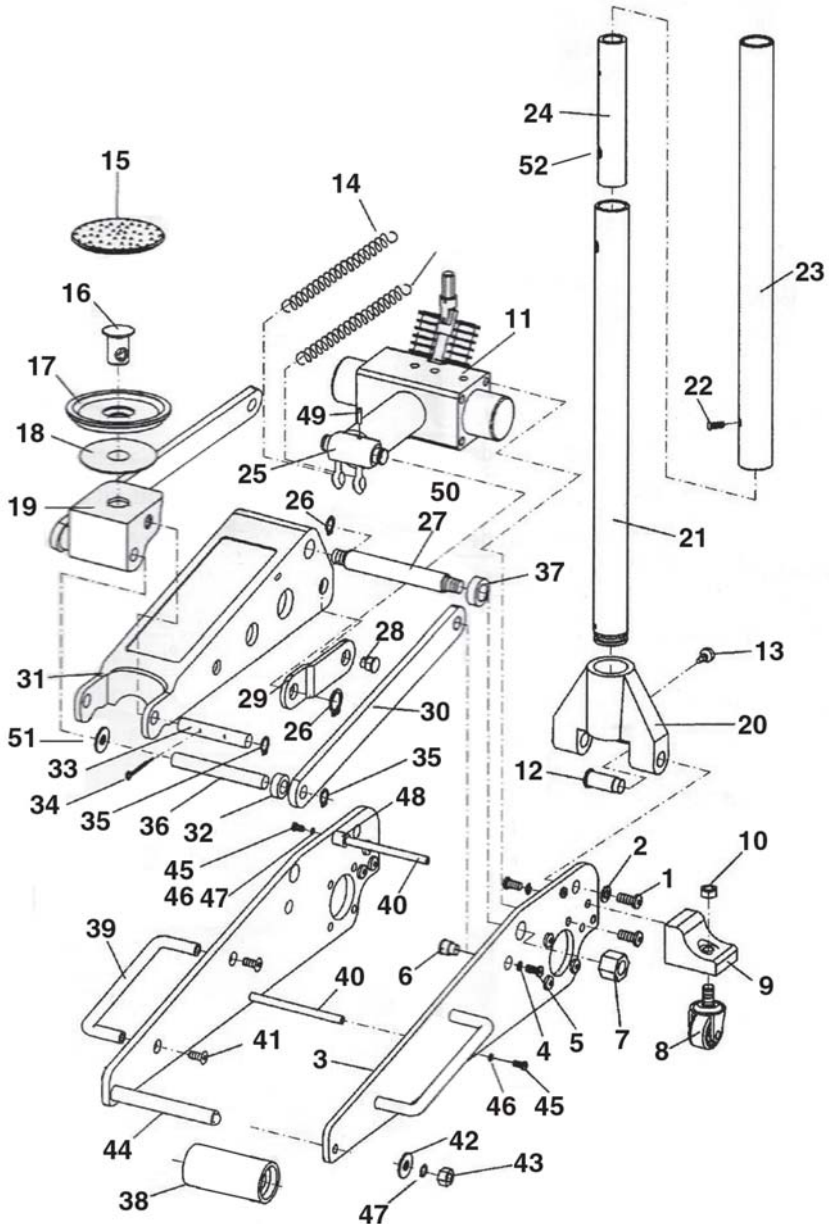
No	DESCRIPTION	PART No
1	Circlip No16	TACTJ2000A01
2	Washer	TACTJ2000A02
3	Compression Spring	TACTJ2000A03
4	Piston Body	TACTJ2000A04
5	Piston	TACTJ2000A05
6	Back-up O-Ring	TACTJ2000A06
7	O-Ring (11.8 x 2.6)	TACTJ2000A07
8	Gasket Ring	TACTJ2000A08
9	Steel Ball 5mm	TACTJ2000A09
10	Screw-in Plug	TACTJ2000A10
11	Sealing Ring	TACTJ2000A11
12	Screw Cap	TACTJ2000A12
13	Compression Spring	TACTJ2000A13
14	Backing Piece	TACTJ2000A14
15	Steel Ball 4mm	TACTJ2000A15
16	Oil Reservoir	TACTJ2000A16
17	O-Ring (54 x 3.5)	TACTJ2000A17

No	DESCRIPTION	PART No
18	Steel Ball 6mm	TACTJ2000A18
19	O-Ring (7.8 x 1.9)	TACTJ2000A19
20	Jointed Operating Rod	TACTJ2000A20
21	Body Casting	TACTJ2000A21
22	Gasket Ring	TACTJ2000A22
23	Cylinder	TACTJ2000A23
24	O-Ring	TACTJ2000A24
25	Back-up O-Ring	TACTJ2000A25
26	Piston Rod	TACTJ2000A26
27	Sealing Ring	TACTJ2000A27
28	Cover	TACTJ2000A28
29	O-Ring (45.5 x 2.8)	TACTJ2000A29
30	End Plug	TACTJ2000A30
31	O-Ring (27.5 x 3.5)	TACTJ2000A31
32	Oil Filler Plug	TACTJ2000A32
33	Sealing Ring	TACTJ2000A33
34	Seal Kit (not shown)	TACTJ2000A34

RAM COMPONENT PARTS



FRAME COMPONENT PARTS



FRAME COMPONENT PARTS

No	DESCRIPTION	PART No	No	DESCRIPTION	PART No
1	R/h m/c Screw 10mm	TACTJ2000A35	27	Main Hinge Rod	TACTJ2000A61
2	Flat Washer 10mm	TACTJ2000A36	28	Tie Bar Pivot	TACTJ2000A62
3	Side Frame	TACTJ2000A37	29	Short Tie Bar	TACTJ2000A63
4	Washer 8 dia	TACTJ2000A38	30	Long Tie Bar	TACTJ2000A64
5	R/h Bolt M8 x 15	TACTJ2000A39	31	Main Lifting Arm	TACTJ2000A65
6	Bush	TACTJ2000A40	32	Spacer-15mm Thick	TACTJ2000A66
7	Nylock Nut M18	TACTJ2000A41	33	Saddle Pivot Rod	TACTJ2000A67
8	Swivel Caster	TACTJ2000A42	34	Split Pin -small	TACTJ2000A68
9	Caster Mounting	TACTJ2000A43	35	Circlip No 13	TACTJ2000A69
10	Nylock Nut M12	TACTJ2000A44	36	Hinge Rod	TACTJ2000A70
11	Ram Assembly	TACTJ2000A45	37	Spacer-12mm thick	TACTJ2000A71
12	Handle Act. Pivot	TACTJ2000A46	38	Front Roller	TACTJ2000A72
13	Handle Retaining Screw	TACTJ2000A47	39	Side Handle	TACTJ2000A73
14	Spring	TACTJ2000A48	40	Tie Rod	TACTJ2000A74
15	Rubber Saddle Pad	TACTJ2000A49	41	C/S Screw M6 x 20	TACTJ2000A75
16	Saddle Swivel Pin	TACTJ2000A50	42	Flat Washer	TACTJ2000A76
17	Saddle	TACTJ2000A51	43	Nut	TACTJ2000A77
18	Saddle Washer	TACTJ2000A52	44	Front Axle	TACTJ2000A78
19	Saddle Base	TACTJ2000A53	45	R/H Bolt M6 x 20	TACTJ2000A79
20	Handle Mounting Assy	TACTJ2000A54	46	M6 Washer	TACTJ2000A80
21	Handle - Lower	TACTJ2000A55	47	Spring Washer	TACTJ2000A81
22	Bolt M6 x 10	TACTJ2000A56	48	Rubber Bush	TACTJ2000A82
23	Handle - Upper	TACTJ2000A57	49	Split Pin - large	TACTJ2000A83
24	Handle Connector	TACTJ2000A58	50	Eyebolt	TACTJ2000A84
25	Hydraulic Piston	TACTJ2000A59	51	Flat Washer	TACTJ2000A85
26	Circlip No19	TACTJ2000A60	52	Spring Clip	TACTJ2000A86

DECLARATION OF CONFORMITY



Clarke[®]
INTERNATIONAL

Hemnal Street, Epping, Essex CM16 4LG

DECLARATION OF CONFORMITY

This is an important document and should be retained.

We hereby declare that this product(s) complies with the following directive(s):

2006/42/EC Machinery Directive.

The following standards have been applied to the product(s):

BS EN 1494/A1:2008

The technical documentation required to demonstrate that the product(s) meet(s) the requirement(s) of the aforementioned directive(s) has been compiled and is available for inspection by the relevant enforcement authorities.

The CE mark was first applied in: 2008

Product Description: 2 Tonne Aluminium Trolley
Model number(s): CTJ2000A
Serial / batch Number: N/A
Date of Issue: 28/10/2011

Signed:

J.A. Clarke
Director

A SELECTION FROM THE VAST RANGE OF

Clarke®

QUALITY PRODUCTS

AIR COMPRESSORS

From DIY to industrial, Plus air tools, spray guns and accessories.

GENERATORS

Prime duty or emergency standby for business, home and leisure.

POWER WASHERS

Hot and cold, electric and engine driven - we have what you need

WELDERS

Mig, Arc, Tig and Spot. From DIY to auto/industrial.

METALWORKING

Drills, grinders and saws for DIY and professional use.

WOODWORKING

Saws, sanders, lathes, mortisers and dust extraction.

HYDRAULICS

Cranes, body repair kits, transmission jacks for all types of workshop use.

WATER PUMPS

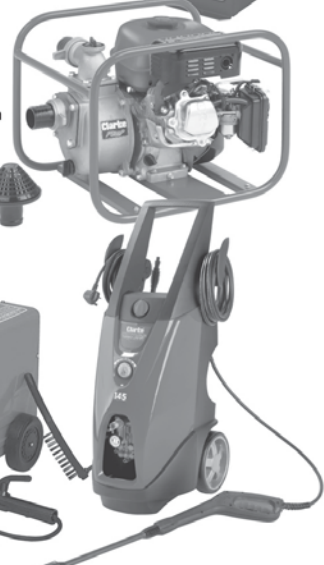
Submersible, electric and engine driven for DIY, agriculture and industry.

POWER TOOLS

Angle grinders, cordless drill sets, saws and sanders.

STARTERS/CHARGERS

All sizes for car and commercial use.



PARTS & SERVICE: 020 8988 7400

E-mail: Parts@clarkeinternational.com or Service@clarkeinternational.com

SALES: UK 01992 565333 or Export 00 44 (0)1992 565335

Clarke INTERNATIONAL Hemnall Street, Epping, Essex CM16 4LG
www.clarkeinternational.com