

ClanPro®

STRONG-ARM



1.8 TONNE ALUMINIUM RACING JACK

MODEL NO: CTJ1800AB

PART NO: 7623201

OPERATION & MAINTENANCE INSTRUCTIONS



ORIGINAL INSTRUCTIONS

DL0322 Rev 1

INTRODUCTION

Thank you for purchasing this CLARKE 1.8 Tonne aluminium racing jack.

Before attempting to use this product, please read this manual thoroughly and follow the instructions carefully. In doing so you will ensure the safety of yourself and that of others around you, and you can look forward to your purchase giving you long and satisfactory service.

SPECIFICATIONS

Model number	CTJ1800AB
Part number	7623201
Length (not including handle)	640 mm
Width (not including wheels)	300 mm
Height	230 mm
Height of saddle (minimum)	85 mm
Height of saddle (maximum)	465 mm
Weight	19 kg
Rated Load	1.8 tonne(1800kg)
Cup diameter	115mm
Pump oil capacity	190ml
Distance per pump action	80mm
Pump actions to max height	5

GUARANTEE

This product is guaranteed against faulty manufacture for a period of 12 months from the date of purchase. Please keep your receipt which will be required as proof of purchase.

This guarantee is invalid if the product is found to have been abused or tampered with in any way, or not used for the purpose for which it was intended.

Faulty goods should be returned to their place of purchase, no product can be returned to us without prior permission.

This guarantee does not effect your statutory rights.

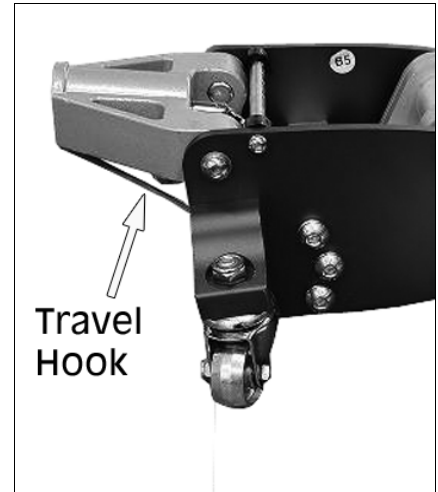
SAFETY PRECAUTIONS

1. Read Instruction manual before use.
2. Only trained persons should operate this lifting equipment.
3. ALWAYS ensure that sufficient light is provided and that the work area is kept clear of unrelated items.
4. ALWAYS inspect the jack before use. Make sure that all parts are in good condition and operating smoothly and that no cracks or distortion is apparent. If in doubt DO NOT use. Have the damaged parts replaced or consult your CLARKE dealer.
5. The jack must be maintained and repaired by suitably qualified persons.
6. DO NOT make any modifications to this jack or adjust any valves.
7. DO NOT use the jack if an oil leak is apparent. Consult your CLARKE dealer.
8. DO NOT use to lift people and ensure that no-one is in the vehicle during lifting.
9. NEVER exceed the rated load for the jack See "Specifications" on page .. Overloading can cause the jack to fail resulting in personal injury.
10. Make sure that the jack is on a hard level surface, and there is no possibility of it slipping when under load.
11. Only use the jack on solid ground, preferably concrete. Avoid tarmac as the jack could sink in.
12. Make sure the load is taken by the full saddle and that the lifting point on the load is of sufficient strength to support the weight.
13. ALWAYS use axle stands to stabilise the load once lifted.
14. Consult the vehicle handbook to determine the correct lifting points.
15. Ensure the load is chocked and the handbrake applied before lifting.
16. NEVER work on or under a load unless it is fully and adequately supported.
17. NEVER rely upon the jack to hold the load in position.
18. NEVER push a load off the jack.
19. Ensure that all personnel are well clear of a load being raised or lowered.
20. Take care not to trap fingers within the moving parts.
21. Use only as a lifting device, do not use as a dolly to move a load.

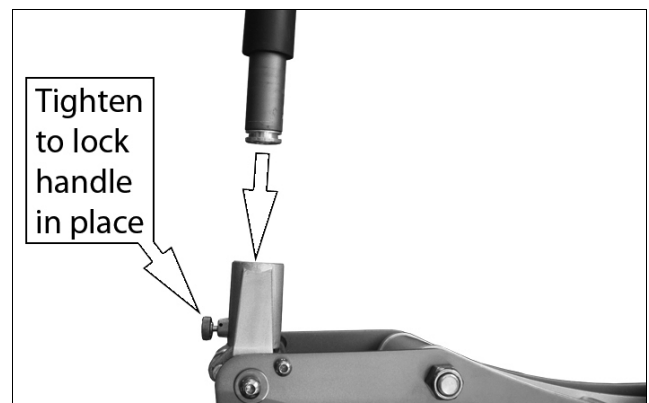
UNPACKING AND ASSEMBLY

ASSEMBLY

1. Remove the travel retaining hook by pressing the handle yoke downwards and unclipping the hook.
 - Take care not to trap fingers while doing this.



2. Insert the lower half of the jack handle into position as shown.
 - Make sure that the square bar inside the handle yoke engages with the hole in the jack handle.



3. Secure the handle by tightening the thumbscrew shown.
4. Fit the upper jack handle to the lower jack handle as shown.
 - Make sure that the ball clip engages with the hole in the lower jack handle.



OPERATION

POSITIONING

Ensure the vehicle is chocked and stable and on firm level ground.

1. Turn the jack handle counterclockwise, to lower the lifting ram.
2. Position the jack so that the saddle is directly beneath the lifting point and that there are no obstacles to prevent a clean lift, also, make sure that all personnel are well away from the area, before raising the vehicle.

LIFTING

1. Close the release valve by turning the jack handle clockwise firmly.
2. Operate the jack by pumping the jack handle.
 - Make sure that the saddle is in full contact with the vehicle lifting point and that there are no obstacles to prevent a clean lift.
3. Place axle stands beneath the vehicle.
 - Make sure that the axle stands are centred under the vehicle support points and are perfectly stable before full weight is taken.
 - Make sure that the axle stands are in good condition and capable of supporting the load.
 - Make sure that the axle stands cannot move when supporting the load and that they are on a firm level surface.
 - DO NOT jerk the handle, ensure it lowers slowly and under complete control on to the axle stands which must be correctly positioned and take the weight evenly.

NOTE: The jack may move slightly during operation. It is therefore important that the immediate vicinity is clean and completely free from clutter.

LOWERING

1. Lift the vehicle slightly to remove the weight from any supports.
2. Remove any supports from beneath the vehicle.
3. Slowly turn the jack handle counterclockwise to open the release valve.

NOTE: make sure that this operation is carried out under complete control. DO NOT allow the load to drop suddenly as this could damage internal components.

4. Remove the jack from beneath the vehicle.

MAINTENANCE

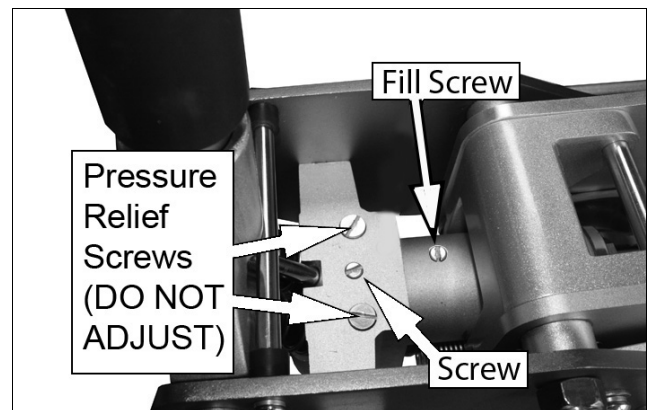
1. When the jack is not in use, keep the saddle lowered and the release valve closed (jack handle turned fully clockwise).
2. Keep the jack clean and apply lubricating oil to all pivoting sections every three months, or more often when it is used in a dusty work environment.
3. Check the pump piston and piston rod periodically for signs of rust or corrosion. Clean exposed area with clean oiled cloth.
4. Change the oil once a year or as required, See page 7.

STORAGE

Store in a dry place, with the ram fully retracted. If stored for long periods, inspect at least once a year, clean and re-oil. For servicing, contact your CLARKE dealer or CLARKE International Service Department.

BLEEDING THE HYDRAULIC SYSTEM

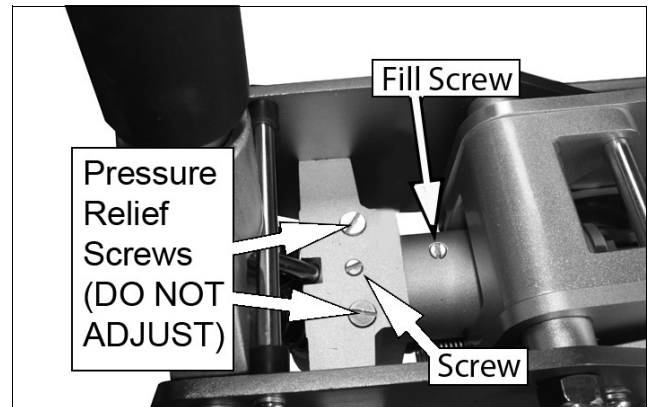
1. Put the jack on horizontal ground.
2. Open the release valve by SLOWLY turning the jack handle counterclockwise and then pump the handle up and down several times.
3. Loosen the fill screw.
4. Pump the jack handle up and down slowly several times to purge the air from the hydraulic system.
5. Tighten the fill screw.



WARNING: DO NOT ADJUST THE PRESSURE RELIEF SCREWS UNDER ANY CIRCUMSTANCES

TOPPING UP OR CHANGING THE OIL

1. Lower the saddle as far as possible.
2. Remove ONLY the filling screw as shown on the right.
3. Turn the jack over and drain the oil into a suitable container.
 - Dispose of the oil in accordance with government regulations.
4. Fill with CLARKE hydraulic oil into the fill screw hole slowly until the oil reaches the bottom of the thread in the oil fill hole.
 - CLARKE Hydraulic oil is available from your local CLARKE dealer.



NOTE: Do not touch the assembled handle when adding the hydraulic oil.

5. Replace the filling screw.

TROUBLESHOOTING

PROBLEM	CAUSE	SOLUTION
Jack will not lift the rated load	Low oil level	See "Topping up or Changing the oil" on page 7.
	Release valve not closed	Turn the jacking handle fully clockwise.
Jack lowers when under load	Release valve not closed	Turn the jacking handle fully clockwise.
	Air in the hydraulic system	Bleed the system. See page 6.
Pump feels spongy	Low oil level	See "Topping up or Changing the oil" on page 7.
	Air in the hydraulic system	Bleed the system. See page 6.
Handle raises or flies back under load	Air in the hydraulic system	Bleed the system. See page 6.
Jack will not lift full height	Low oil level	See "Topping up or Changing the oil" on page 7.
	Air in the hydraulic system	Bleed the system. See page 6.

If any of these remedies fail to restore your jack, consult your CLARKE dealer.

DECLARATIONS OF CONFORMITY



Fitzwilliam Hall, Fitzwilliam Place, Dublin 2

DECLARATION OF CONFORMITY

This is an important document and should be retained.

We hereby declare that this product(s) complies with the following directive(s):

2006/42/EC Machinery Directive

The following standards have been applied to the product(s):

EN 1494:2000+A1:2008

The technical documentation required to demonstrate that the product(s) meet(s) the requirement(s) of the aforementioned directive(s) has been compiled and is available for inspection by the relevant enforcement authorities.

The CE mark was first applied in: 2021

Product Description: 1.8 Tonne Aluminium Racing Jack
Model number(s): CTJ1800AB
Serial / batch Number: N/A
Date of Issue: 18/11/2021

Signed:

J.A. Clarke
Director

CTJ1800AB CE Clarke DOC 111821

Page 1 of 1



Hemnell Street, Epping, Essex CM16 4LG

DECLARATION OF CONFORMITY

This is an important document and should be retained.

We hereby declare that this product(s) complies with the following statutory requirement(s):

Supply of Machinery (Safety) Regulations 2008

The following standards have been applied to the product(s):

EN 1494:2000+A1:2008

The technical documentation required to demonstrate that the product(s) meet(s) the requirement(s) of the aforementioned legislation has been compiled and is available for inspection by the relevant enforcement authorities.

The UKCA mark was first applied in: 2021

Product Description: 1.8 Tonne Aluminium Racing Jack
Model number(s): CTJ1800AB
Serial / batch Number: N/A
Date of Issue: 18/11/2021

Signed:

J.A. Clarke
Director

CTJ1800AB UKCA Clarke DOC 111821

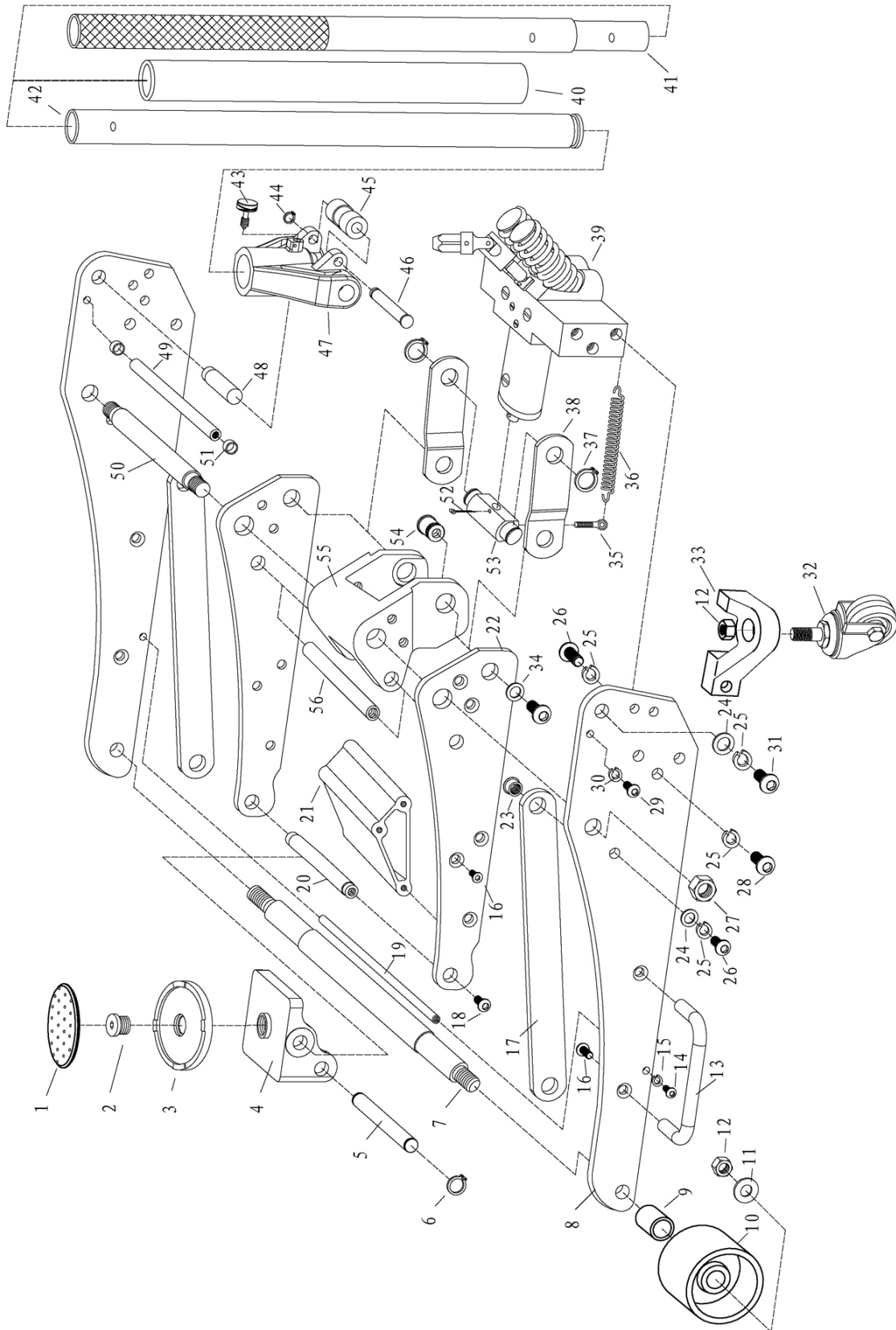
Page 1 of 1

COMPONENT PARTS - (GENERAL ASSEMBLY)

No	Description
1	Saddle Pad
2	Saddle Screw
3	Saddle
4	Saddle Base
5	Hinge Pin
6	Circlip
7	Front Axle
8	Side Plate
9	Front Wheel Bush
10	Front Wheel
11	Front Wheel Washer
12	Nut
13	Side Carrying Handle
14	Screw
15	Washer
16	Screw
17	Support Pivot Bar
18	Screw
19	Arm Stop Bar
20	Saddle Base Pin
21	Spacer
22	Arm Side Plate
23	Screw
24	Washer
25	Split Washer
26	Screw
27	Nut
28	Screw M10X35

No	Description
29	Screw
30	Washer
31	Screw
32	Rear Caster
33	Rear Caster Base
34	Washer
35	Spring Clip
36	Spring
37	Circlip
38	Trunnion Arm
39	Hydraulic Unit
40	Handle Sleeve
41	Upper Handle
42	Lower Handle
43	Handle Set Screw
44	Circlip
45	Roller
46	Roller Pin
47	Handle Yoke
48	Handle Yoke Pivot Pin
49	Tie Rod
50	Lift Arm Pivot Rod
51	Rubber Bumper
52	Split Pin
53	Trunnion Block
54	Hinge Bush
55	Connection Block
56	Hinge Pin

COMPONENT PARTS -(GENERAL ASSEMBLY)



A SELECTION FROM THE VAST RANGE OF

Clarke®

QUALITY PRODUCTS



AIR COMPRESSORS
From DIY to industrial, Plus air tools, spray guns and accessories.

GENERATORS
Prime duty or emergency standby for business, home and leisure.

POWER WASHERS
Hot and cold, electric and engine driven - we have what you need

WELDERS
Mig, Arc, Tig and Spot. From DIY to auto/industrial.

METALWORKING
Drills, grinders and saws for DIY and professional use.

WOODWORKING
Saws, sanders, lathes, mortisers and dust extraction.

HYDRAULICS
Cranes, body repair kits, transmission jacks for all types of workshop use.

WATER PUMPS
Submersible, electric and engine driven for DIY, agriculture and industry.

POWERTOOLS
Angle grinders, cordless drill sets, saws and sanders.

STARTERS/CHARGERS
All sizes for car and commercial use.



PARTS & SERVICE: 0208 988 7400

Parts Enquiries
Parts@clarkeinternational.com

Servicing & Technical Enquiries
Service@clarkeinternational.com

SALES: UK 01992 565333 or Export 00 44 (0)1992 565335

Clarke® INTERNATIONAL Hemnall Street, Epping, Essex CM16 4LG
www.clarkeinternational.com