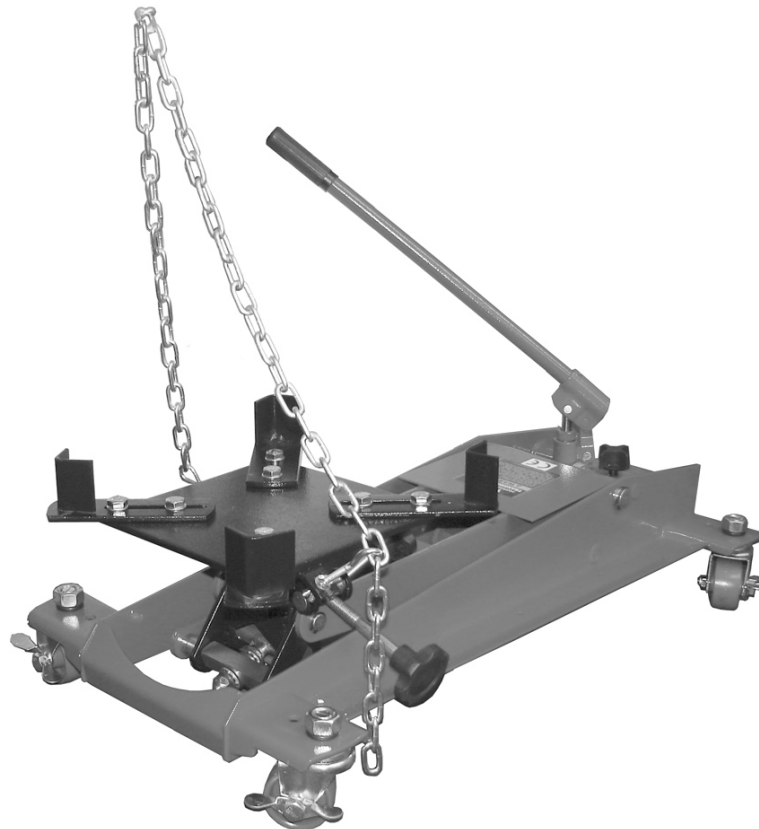


CLAMPBRO®



TRANSMISSION JACK

MODEL NO: CFTJ500

PART NO: 7612635

OPERATION AND MAINTENANCE INSTRUCTIONS

UK
CA | CE

ORIGINAL INSTRUCTIONS

DL0922 Rev 1

INTRODUCTION

Thank you for purchasing this CLARKE Transmission Jack, designed for use in the removal and installation of transmissions and differentials.

Before attempting to use this product, please read this manual thoroughly and follow the instructions carefully. In doing so you will ensure the safety of yourself and that of others around you, and you can look forward to your purchase giving you long and satisfactory service.

GUARANTEE

This product is guaranteed against faulty manufacture for a period of 12 months from the date of purchase. Please keep your receipt which will be required as proof of purchase.

This guarantee is invalid if the product is found to have been abused or tampered with in any way, or not used for the purpose for which it was intended.

Faulty goods should be returned to their place of purchase, no product can be returned to us without prior permission.

This guarantee does not effect your statutory rights.

SPECIFICATION

Rated Load	500 kg
Min height of saddle	265 mm
Max height of saddle	645 mm
No of strokes from rest to max height	28
Distance per pump action	14 mm
Dimensions (L x W x H)	761 x 408 x 265 mm
Weight	36.1 kg

SAFETY PRECAUTIONS

1. Do not exceed the rated load of the jack.
2. Do not allow personnel to operate the jack unless they have read these safety precautions.
3. Ensure that the jack is in good working order. Have any damaged parts repaired or replaced immediately. Use genuine Clarke parts only. The use of unauthorised parts may be dangerous and will invalidate the guarantee.
4. Do not operate the jack if damaged.
5. Use the jack in a suitable, well lit work area.
6. Keep the work area clean and tidy and free from unrelated items.
7. Use the jack on level and solid ground, preferably concrete. Avoid soft/ unmade ground as the jack may sink in.
8. Ensure the vehicle is securely and rigidly supported.
9. Check the transmission is centred on the jack saddle.
10. Ensure all non-essential persons keep a safe distance whilst the jack is in use.
11. Ensure there are no personnel or obstructions under the vehicle transmission before lowering.
12. Do not stand or work under the load until it secured by suitable means.
13. Ensure when lifting, that the jack and all parts of the load can be clearly seen.
14. Never climb on, or attempt to ride on the jack.
15. Use the jack for lifting transmissions only, NOT for supporting the weight of the vehicle.
16. Take care not to trap fingers in the moving parts of the jack.
17. Lower the load as much as possible before moving the jack. Do not transport loads in an elevated position.
18. Ensure that you can see the saddle and jacking point throughout the jacking operation in case there is any relative movement.
19. Never tamper with the product or modify it in any way, as this could prove to be dangerous and will invalidate the guarantee. Only use the product for the purpose for which it is intended.

20. Use appropriate safety equipment, such as protective footwear, when using this jack.
21. When replacing parts, use only those supplied by Clarke International. Refer to the parts list on page 10.
22. Ensure that the jack is properly maintained, and lubricated at all times, and that no rust or other forms of corrosion is allowed to weaken any part of it.
23. If the jack has been subjected to an abnormal load or shock, it should be removed from service immediately and fully inspected by qualified personnel, and passed as serviceable, before being used again.
24. When not in use, store the jack, fully lowered, in a safe, dry, childproof area.

IMPORTANT: ALWAYS ensure that the centre of gravity of the load, is centred about the head section, before taking the full weight.

SAFETY SYMBOLS

The following safety symbols may be found on the product.



Wear foot protection

LIFTING OPERATIONS AND LIFTING EQUIPMENT REGULATIONS 1998

This jack, depending on use, may fall within the scope of LOLER. It is the owner's responsibility to determine whether or not it does and, if so, to comply with any applicable requirements in LOLER, for having the jack thoroughly examined.

ENVIRONMENTAL PROTECTION

1. Take care to ensure that if hydraulic oil is spilt that it is cleaned away using sand or treated with absorbent granules designed for the purpose.
2. Always make every effort to contain any spillage and prevent ingress into the local water course.

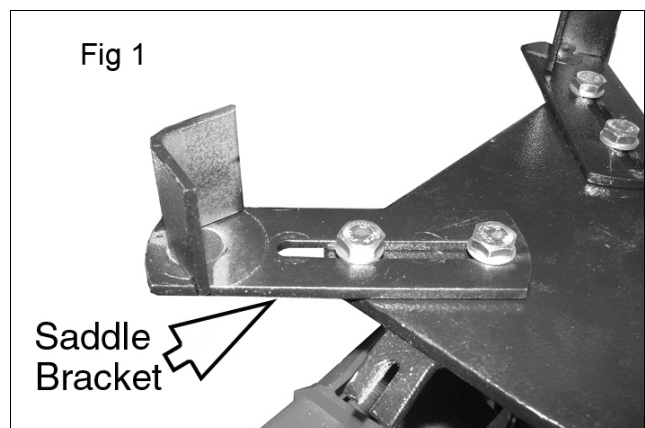
UNPACKING & ASSEMBLY

Unpack the components on a clean flat area of hard standing and ensure that all parts are present as listed:

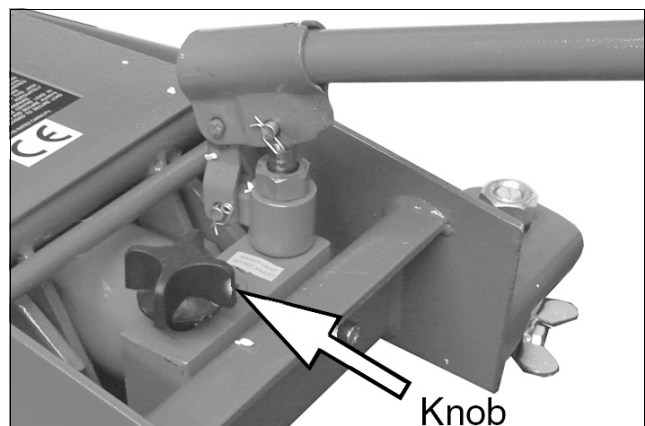
- 1 x Jack
- 1 x Handle
- 4 x Saddle Brackets
- 1 x Fixings Kit including chain

Visually inspect all components to ensure that no damage was suffered in transit. Any damage should be reported to your CLARKE dealer immediately.

1. Mount the four saddle brackets to the saddle using the eight bolts supplied.



2. Insert the operating handle into the socket.
3. Test the operation of the jack by tightening the knob clockwise to close the release valve. Pump the handle up and down to raise the saddle. Unscrew the knob to open the valve and lower the jack.



PURGING AIR BUBBLES

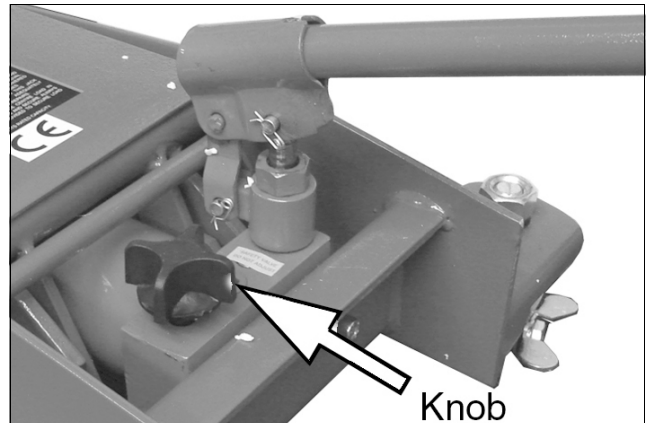
During transit or storage, it is possible that an air pocket may have developed within the hydraulic ram, and the ram action may therefore appear to be 'spongy'. As the ram is self bleeding, any air will be dispelled via the vent and the ram action normalised, by raising and lowering the jack a few times while not under load. If the jack does not reach its full height, the oil level may require topping up, as described in the Maintenance section.

OPERATING INSTRUCTIONS

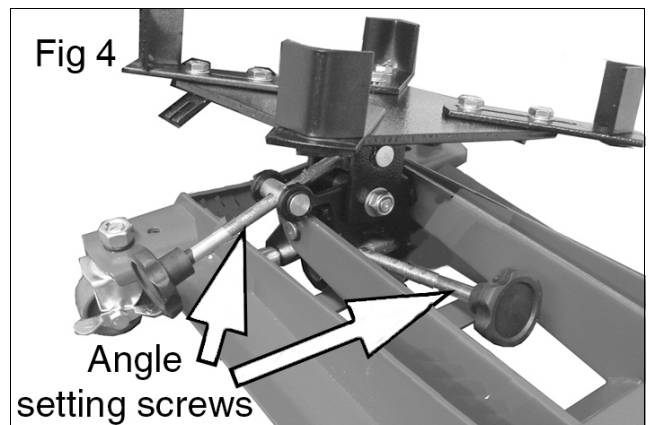


WARNING: BEFORE LIFTING, ENSURE THE SAFETY PRECAUTIONS ARE STRICTLY FOLLOWED. NO RESPONSIBILITY CAN BE ACCEPTED FOR INCORRECT USE OF THE JACK

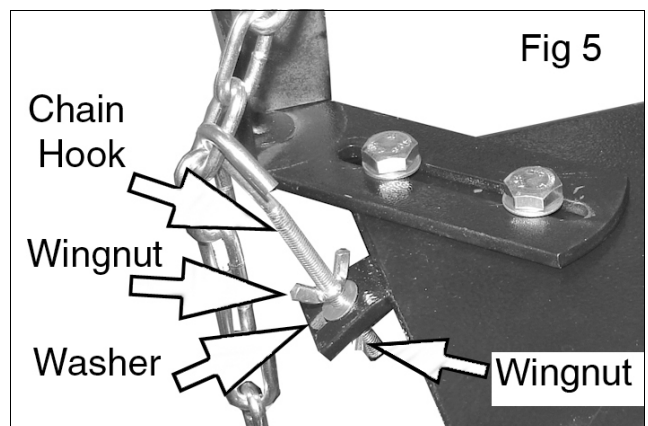
1. Ensure the vehicle is in a safe state as mentioned in the safety precautions, ensuring the ground on which the jack is to operate is level and solid.
2. Position the saddle under the vehicle transmission.
3. Turn the operating valve knob in Fig 3 clockwise until the valve is fully closed.
4. Pump the handle to reach the desired height.



5. Adjust the angle of the saddle to align with the shape of the transmission using the adjusting knobs on the angle setting screws shown in Fig 4.



6. Adjust the saddle brackets and use the chain to secure the transmission onto the saddle as follows.
7. Screw a wingnut part way up the chain hook followed by a washer. Pass the threaded end through the saddle bracket and attach with a washer and second wingnut as shown in Fig 5.



8. Disconnect the transmission from the vehicle, ensuring its centre of gravity is centred over the saddle before the full load is taken.
9. With the load fully secured, turn the operating knob VERY SLOWLY anticlockwise to lower the saddle.

- The more the knob is turned, the greater the rate of descent.



WARNING: ALWAYS LOWER IN A SLOW AND CONTROLLED MANNER, AND ENSURE THAT THERE ARE NO OBSTACLES IN THE PATH OF THE LOAD'S DESCENT. ALWAYS TRANSPORT THE LOAD IN THE LOWERED POSITION WITH THE CHAIN SECURELY FASTENED AND ENGAGE THE BRAKES ON EACH CASTOR WHEN STATIONARY.

MAINTENANCE

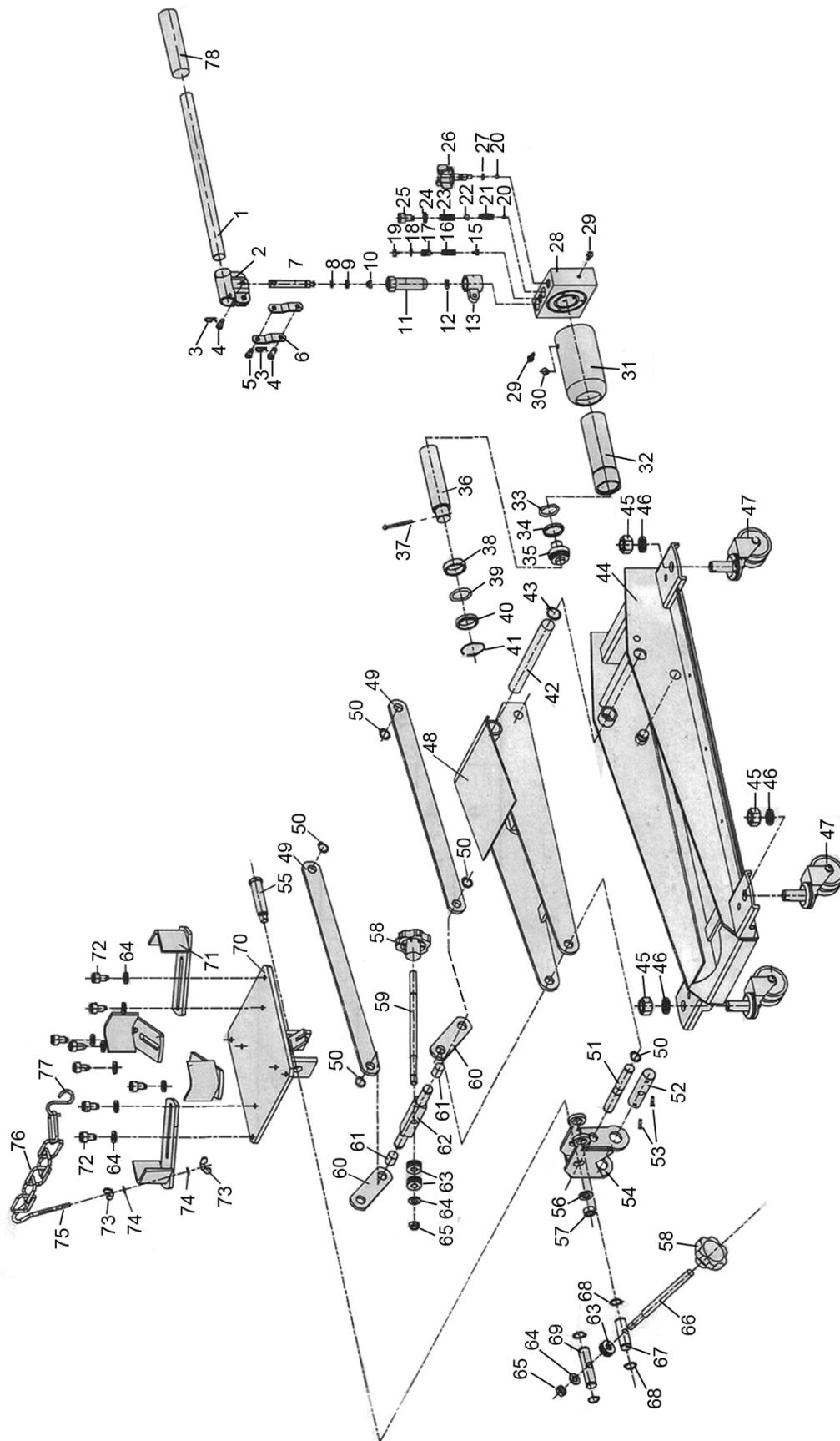
IMPORTANT: Only fully qualified personnel should attempt repairs.

1. Always visually inspect the jack before use, to ensure that all parts are correctly located and secure. Check for hydraulic leaks, signs of damage or worn parts and check the castors for damage. **Do not use the jack unless it is perfectly serviceable.**
2. Traces of oil on the ram is normal, but where leakage is apparent, the ram seals must be renewed by your Clarke dealer.
3. The jack should be fully inspected annually as follows:
 - Check for cracks and deformation of components.
 - Check castors to ensure they move freely without undue wear to their bores, and that the wheels are not cracked or damaged.
 - Remove any rust or corrosion and repaint to prevent further corrosion.
 - Ensure that all labels and warning notices are in place and legible.
4. Maintain a light coating of grease on the threads of the angle setting screws.
5. Periodically check the level of oil in the cylinder and top up if low. Proceed as follows.
 - Lower the ram to its lowest position and remove the oil filler plug.
 - Using an oil can, slowly top up the oil to the level then replace the filler screw.

NOTE: Top up using Clarke hydraulic oil (Part Number 3050830).

6. After use, wherever possible, store the jack with the ram in its lowest position. This not only relieves the hydraulic ram, but also prevents any possibility of corrosion to the ram.
7. Do not leave the jack in the open, exposed to the weather.

PARTS LIST & DIAGRAM



COMPONENT PARTS

No	Description
1	Operating Handle
2	Handle Socket
3	R-Clip
4	Hinge Pin
5	Pivot Pin
6	Actuating Link
7	Plunger
8	O-Ring
9	Back Ring
10	Umbrella Washer
11	Cylinder
12	Pump Washer
13	Connecting Link
14	3mm Steel Ball
15	Spring Seat
16	Valve Spring
17	Over Pressure Screw
18	O-Ring
19	Safety Valve Cap
20	6mm Steel Ball
21	Spring
22	9mm Steel Ball
23	Tapered Spring
24	Airtight Washer
25	Bolt M12 x 20
26	Release Valve Knob
27	O-Ring
28	Valve Body

No	Description
29	Screw
30	Oil Filler Plug
31	Reservoir
32	Ram
33	O-Ring
34	Cup Washer
35	Piston
36	Piston Shaft
37	Split Pin 4x40
38	Lower Ring
39	O-Ring
40	Upper Ring
41	Circlip
42	Pivot Shaft
43	Circlip
44	Frame
45	Nut M18
46	Spring Washer 18dia
47	Castor Wheel
48	Lifting Arm
49	Side Link Plate
50	Circlip 16
51	Hinge Spindle
52	Lower Hinge Pin
53	Roll Pin 4x18
54	Moving Trunnion
55	Support Plate Hinge Pin
56	Washer 12

No	Description
57	Nut M12
58	Hand Knob
59	Threaded Shaft
60	Fishplate
61	Bush
62	Actuating Pivot
63	Thrust Bearing 8200
64	Washer
65	Nut M10
66	Threaded Shaft
67	Pivot

No	Description
68	Circlip 18
69	Angle Block
70	Support Plate
71	Saddle Bracket
72	Socket Bolt M10 x6
73	Wingnut M6
74	Washer 6mm
75	Securing Hook
76	Chain
77	Chain Hook
78	Handle Grip

RELATED CLARKE PRODUCTS

2, 3 & 6 ton Axle Stands



These professional heavy duty axle stands are built for tough daily use in automotive workshops. Sold in pairs.

CT3000QLB Garage Jack



Quickly able to reach its maximum height allowing you to reach the vehicle contact point with speed. Built-in by-pass system prevents overloading. Strong 2-piece handle & twist-lock control.

DECLARATION OF CONFORMITY



Hemnell Street, Epping, Essex CM16 4LG

DECLARATION OF CONFORMITY

This is an important document and should be retained.

We hereby declare that this product(s) complies with the following statutory requirement(s):

Supply of Machinery (Safety) Regulations 2008

The following standards have been applied to the product(s):

EN ISO 12100:2010, EN 1494:2000+A1:2008

The technical documentation required to demonstrate that the product(s) meet(s) the requirement(s) of the aforementioned legislation has been compiled and is available for inspection by the relevant enforcement authorities.

The UKCA mark was first applied in: 2022

Product Description: 0.5T Horizontal Transmission Jack
Model number(s): CFTJ500
Serial / batch Number: N/A
Date of Issue: 13/09/2022

Signed:

J.A. Clarke
Director



Fitzwilliam Hall, Fitzwilliam Place, Dublin 2

DECLARATION OF CONFORMITY

This is an important document and should be retained.

We hereby declare that this product(s) complies with the following directive(s):

2006/42/EC Machinery Directive

The following standards have been applied to the product(s):

EN ISO 12100:2010, EN 1494:2000+A1:2008

The technical documentation required to demonstrate that the product(s) meet(s) the requirement(s) of the aforementioned directive(s) has been compiled and is available for inspection by the relevant enforcement authorities.

The CE mark was first applied in: 2016

Product Description: 0.5T Horizontal Transmission Jack
Model number(s): CFTJ500
Serial / batch Number: N/A
Date of Issue: 13/09/2022

Signed:

J.A. Clarke
Director

A SELECTION FROM THE VAST RANGE OF

Clarke®

QUALITY PRODUCTS



AIR COMPRESSORS

From DIY to industrial, Plus air tools, spray guns and accessories.

GENERATORS

Prime duty or emergency standby for business, home and leisure.

POWER WASHERS

Hot and cold, electric and engine driven - we have what you need

WELDERS

Mig, Arc, Tig and Spot. From DIY to auto/industrial.

METALWORKING

Drills, grinders and saws for DIY and professional use.

WOODWORKING

Saws, sanders, lathes, mortisers and dust extraction.

HYDRAULICS

Cranes, body repair kits, transmission jacks for all types of workshop use.

WATER PUMPS

Submersible, electric and engine driven for DIY, agriculture and industry.

POWERTOOLS

Angle grinders, cordless drill sets, saws and sanders.

STARTERS/CHARGERS

All sizes for car and commercial use.

PARTS & SERVICE:

0208 988 7400

Parts Enquiries

Parts@clarkeinternational.com

Servicing & Technical Enquiries

Service@clarkeinternational.com

SALES: UK 01992 565333 or Export 00 44 (0)1992 565335

Clarke® INTERNATIONAL Hemnall Street, Epping, Essex CM16 4LG
www.clarkeinternational.com