

**Clarke®**



**Night Vision Scope**

MODEL: CNV60

Part No: 4499210

User Guide

LS1109



## INTRODUCTION

Thank you for purchasing this CLARKE product.

Before attempting to use the product, it is essential that you read this manual thoroughly and carefully follow all instructions given. In doing so you will ensure the safety of yourself and that of others around you, and you can also look forward to the product giving you long and satisfactory service.

## GUARANTEE

This CLARKE product is guaranteed against faulty manufacture for a period of 12 months from the date of purchase. Please keep your receipt as proof of purchase.

This guarantee is invalid if the product is found to have been abused or tampered with in any way, or not used for the purpose for which it was intended.

Faulty goods should be returned to their place of purchase, no product can be returned to us without prior permission.

This guarantee does not effect your statutory rights.

## SPECIFICATIONS

### OBJECTIVE LENS:

Focus Length:	f = 21.08 mm
Aperature:	F = 1.14
Field of View:	10° - up to 60 meters

### EYEPIECE:

Magnification:	2.3x
Diopter Adjustment:	- 4 - + 2
Product Size (L x W x H):	115 x 42 x 79mm
Product Weight:	112g (excluding batteries)



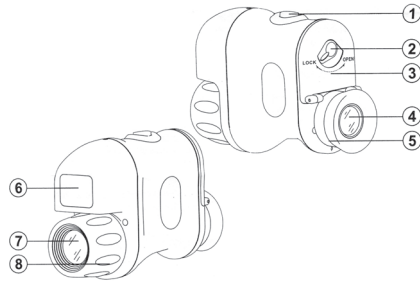
**Clarke**

2





### PARTS LIST



1	On/Off/Mode Button
2	Battery Door Lock
3	Battery Door
4	Eye-piece
5	Eye-piece Focusing Dial
6	Infra-Red Window
7	Objective Lens
8	Objective Lens Focusing Dial





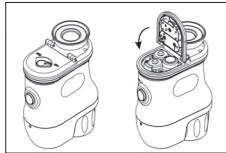
### SAFETY PRECAUTIONS

- NEVER look directly at the sun or any other source of bright light, doing so could damage the unit and may lead to permanent damage to your eyes.

### BEFORE USE

#### BATTERY INSTALLATION

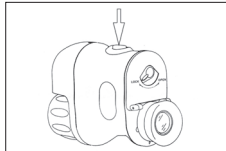
1. To open the battery door, turn the battery door lock (2) towards the OPEN position.
2. Insert 3 x AA batteries (not supplied) making sure the polarity of the batteries matches that shown in the battery door.
3. Close the battery door and lock it by turning the battery door lock to the LOCK position.



### USAGE

#### TURNING ON/OFF THE NIGHT SCOPE

1. After installing the batteries, press once the On/Off/Mode button (1). The night scope will turn on. The LED will light up in the Infra-red window and the screen inside the eyepiece (4) will light up.
2. When turning off the night scope, press and hold down on the On/Off/Mode button for 2 seconds.



#### ATTENTION

Do not block the Infra-red window and objective lens when looking through the night scope.

When batteries run low, causing abnormal performance, exchange fresh batteries immediately.

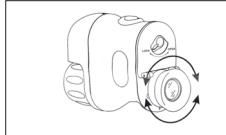
**Clarke**



### FOCUSING

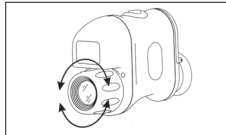
#### EYEPiece FOCUSING:

When the night scope is turned on, turn the eyepiece focusing dial (8) until the screen is clear.



#### OBJECTIVE LENS FOCUSING:

After the eyepiece has been focused, turn the objective lens focusing dial (8) until the object of observation can be clearly seen on the screen.

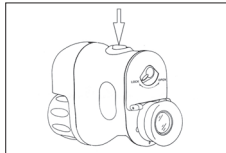


**Note:** Repeat the above procedures if necessary until the image is sharp and clear.

### MODE SETTING

There are 4 luminosity settings for night scope.

The 4 luminosity modes can be cycled through by repeatedly pressing the On/Off/Mode button twice in quick succession.



**Low Luminosity:** When the night scope is turned on, it is already set at the low luminosity mode.

**Mid Luminosity:** When the light seems insufficient at low luminosity mode, press the On/Off/Mode button twice in quick succession to set it to mid luminosity mode.

**High Luminosity:** When light is still insufficient at mid luminosity mode, press the On/Off/Mode button twice in quick succession to set it to high luminosity mode.

**No Luminosity:** When you do not need illumination, press the On/Off/Mode button twice in quick succession to turn off the IR LED.



### STORAGE & CARE

1. Remove the batteries when not in use for prolonged periods of time.
2. This unit contains precision optics and electronic components. Avoid extreme vibration and shock to the unit.
3. Always store in a cool dry place, away from rubbish and chemical.
4. Do not store in high temperature, humid environments, and/or direct sunlight.
5. Keep all lenses clean and avoid scratching the lenses.
6. Keep this manual for future reference.

### ENVIRONMENTAL PROTECTION



Do not dispose of this product with general household waste. All tools, accessories and packaging should be sorted, taken to a recycling centre and disposed of appropriately.



**Clarke**





**DECLARATION OF CONFORMITY**



**Clarke**  
INTERNATIONAL

Hammill Street, Epping, Essex CM16 4LG

**DECLARATION OF CONFORMITY**

This is an important document and should be retained.

We hereby declare that this product(s) complies with the following directive(s):

2004/108/EC Electromagnetic Compatibility Directive (amended 96/68/EC)  
2002/95/EC Restriction of Hazardous substances

The following standards have been applied to the product(s):

EN 61000-6-3:2001+A11:2004, EN61000-6-1:2001

The technical documentation required to demonstrate that the product(s) meet(s) the requirement(s) of the aforementioned directive(s) has been compiled and is available for inspection by the relevant enforcement authorities.

The CE mark was first applied in: 2006

Product Description: Mini Night Vision Scope  
Model number(s): CNV60  
Serial / batch Number: N/A  
Date of Issue: 11/09/09

Signed:

J.A. Clarke  
Director





A SELECTION FROM THE VAST RANGE OF

# Clarke®

QUALITY PRODUCTS

**AIR COMPRESSORS**  
From DIY to industrial. Plus air tools, spray guns and accessories.

**GENERATORS**

Prime duty or emergency standby for business, home and leisure.

**POWER WASHERS**

Hot and cold, electric and engine driven - we have what you need

**WELDERS**

Mig, Arc, Tig and Spot. From DIY to auto/industrial.

**METALWORKING**

Drills, grinders and saws for DIY and professional use.

**WOODWORKING**

Saws, sanders, planes, mortisers and dust extraction.

**HYDRAULICS**

Cranes, body repair kits, transmission jacks for all types of workshop use.

**WATER PUMPS**

Submersible, electric and engine driven for DIY, agriculture and industry.

**POWER TOOLS**

Angle grinders, cordless drill sets, saws and sanders.

**STARTERS/CHARGERS**

All sizes for car and commercial use.



**PARTS & SERVICE: 0208 988 7400**  
E-mail: [Parts@clarkeinternational.com](mailto:Parts@clarkeinternational.com) or [Service@clarkeinternational.com](mailto:Service@clarkeinternational.com)  
**SALES: UK 01992 565333 or Export 00 44 (0)1992 565335**

**Clarke** INTERNATIONAL Hemnall Street, Epping, Essex CM16 4LG  
[www.clarkeinternational.com](http://www.clarkeinternational.com)