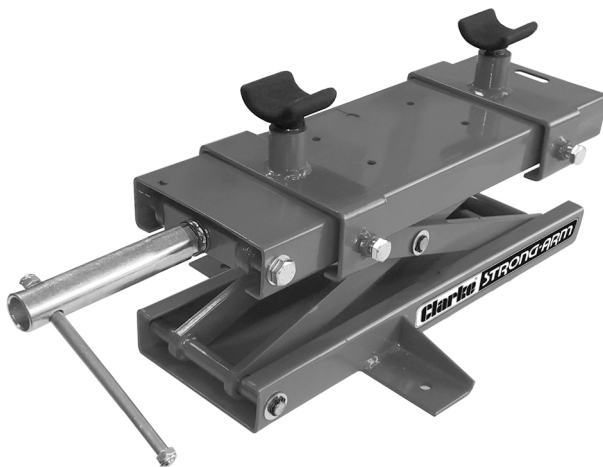


Clarke®

STRONG-ARM



MOTORCYCLE TABLE LIFT

MODEL NO: CML6

PART NO: 7610194

USER INSTRUCTIONS

UK
CA | CE

ORIGINAL INSTRUCTIONS

GC 08/22

INTRODUCTION

Thank you for purchasing this CLARKE Motorcycle Table Lift.

Before attempting to use this product, please read this manual thoroughly and follow the instructions carefully. In doing so you will ensure the safety of yourself and that of others around you, and you can look forward to your purchase giving you long and satisfactory service.

SPECIFICATION

Max Rated Load	500 kg
Product weight	13.7 kg
Product dimensions	494 x 312 x 163 mm
Min height of table	90 mm
Max height of table	400 mm
Max height of lifting cups from rest	470mm to bottom of cup
Min height of lifting cups from rest	160mm to bottom of cup
Table Size	450 x 150 mm

GUARANTEE

This product is guaranteed against faulty manufacture for a period of 12 months from the date of purchase. Please keep your receipt which will be required as proof of purchase.

This guarantee is invalid if the product is found to have been abused or tampered with in any way, or not used for the purpose for which it was intended.

Faulty goods should be returned to their place of purchase, no product can be returned to us without prior permission.

This guarantee does not effect your statutory rights.

SAFETY PRECAUTIONS

1. Ensure that the lift is in good working order. Have any damaged parts repaired or replaced immediately. Use genuine CLARKE parts only. The use of unauthorised parts may be dangerous and will invalidate the warranty.
2. Only use the lift in a suitable, well lit work area.
3. Keep the work area clean and tidy and free from unrelated items.
4. Use the lift on level and solid ground, preferably concrete. Avoid soft/ unmade ground as the lift may sink in.
5. Ensure the engine is switched off and the transmission is in 1st or reverse gear.
6. Ensure a minimum distance of 0.5 m between the motorcycle and static objects such as doors, walls, etc, to allow for the motorcycle tilting.
7. Check the lifting point is rigid and centred on the lift saddles.
8. Place chocks under the wheels of the motorcycle.
9. Keep all non-essential persons at a safe distance whilst the lift is in use.
10. Ensure there are no personnel or obstructions under the motorcycle before lowering.
11. Take care not to trap fingers in the moving parts of the lift.
12. **DO NOT** allow personnel to operate the lift unless they have read these safety precautions.
13. **DO NOT** exceed the rated capacity of the lift.
14. **DO NOT** lift a motorcycle if there is a risk of spillage of fuel, battery acid or other dangerous substances.
15. **NEVER** tamper with the product or modify it in any way, as this could prove to be dangerous and will invalidate the guarantee. Only use the product for the purpose for which it is intended.
16. When not in use, store the lift fully lowered, in a safe, dry, childproof area.
17. No responsibility can be accepted for incorrect use of the lift.

LIFTING OPERATIONS AND LIFTING EQUIPMENT REGULATIONS 1998

This lift, depending on use, may fall within the scope of LOLER. It is the owner's responsibility to determine whether or not it does and, if so, to comply with any applicable requirements in LOLER, for having the lift thoroughly examined.

OPERATING INSTRUCTIONS



WARNING: BEFORE LIFTING, ENSURE THE SAFETY PRECAUTIONS ARE STRICTLY FOLLOWED.

WARNING: BEFORE USE, ENSURE THAT THE MOTORCYCLE HAS A SUITABLE STRUCTURE AND CENTRE OF GRAVITY TO ACCOMMODATE THE LIFT SUPPORTS WITHOUT DAMAGING THE MOTORCYCLE.



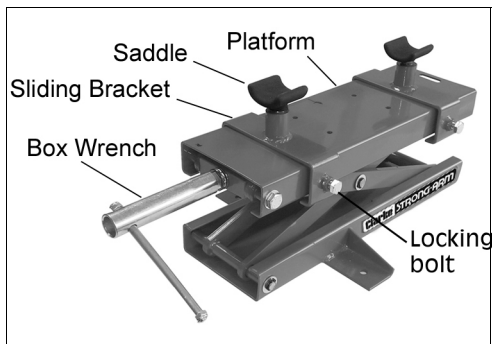
CAUTION: DO NOT USE THE LIFT IF IT WILL FOUL ON THE EXHAUST OR OTHER VULNERABLE PARTS. IF NECESSARY REMOVE ANY LOWER FAIRING AND ENSURE THAT THE MOTORCYCLE IS STABLE ON THE SUPPORTS BEFORE OPERATING.

POSITIONING THE LIFT

NOTE: If required, the lift can be bolted to a floor or bench as a permanent installation using the mounting bolt holes in the base. (Mounting bolts not supplied).

The lift is raised by turning the spindle with the 21mm box wrench provided. **DO NOT** attempt to use a power tool.

1. Position the motorcycle in a suitable area, checking that the surface on which the lift will be placed is solid and flat (preferably concrete).
2. Ensure there is good access and clearance beneath the motorcycle for the lift.
 - The lift can be also be used in conjunction with a motorcycle that is already raised on a motorcycle lift. Ensure that the lift is fully located on the lift platform.
3. Slide the two sliding brackets over the platform of the lift.
4. Inspect the underside of the motorcycle for suitable support points, bearing in mind the centre of gravity of the motorcycle and which wheel is to be lifted from the ground.
5. Screw the saddles into the sockets of the sliding brackets.
6. Place the lift under the motorcycle in the approximate position required.



LIFTING THE MOTORCYCLE

1. Use the box wrench to raise the platform until the saddles reach the intended points of contact on the underside of the motorcycle. Adjust the position of the lift and/or sliding brackets as necessary and proceed to raise the motorcycle.
2. Lock the position of the sliding brackets for greater security using the bolts on one side.
3. Turn the box wrench slowly and evenly to ensure no sudden movements of the motorcycle.
4. For additional security it is advisable to retain the motorcycle on the stand with suitable straps, especially if the motorcycle is already raised from the ground on a motorcycle lift.

LOWERING THE MOTORCYCLE

1. When work is complete, check under the lift platform to ensure that there are no obstructions and that it is safe to lower the unit.
2. Slowly turn the box wrench anti-clockwise to lower the motorcycle.



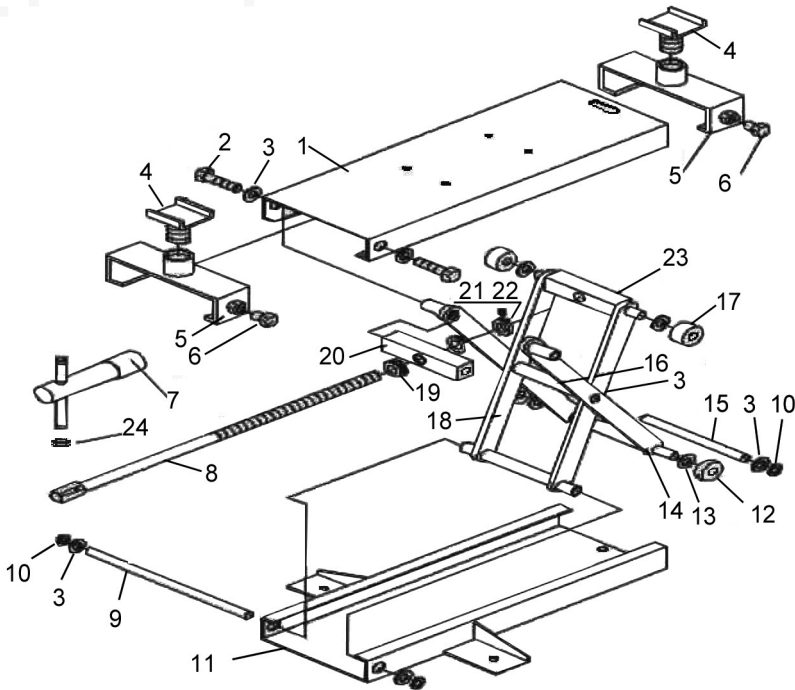
WARNING: ALWAYS LOWER IN A SLOW AND CONTROLLED MANNER AND ENSURE THERE ARE NO PERSONS OR OBSTACLES BENEATH THE MOTORCYCLE, OR IN THE PATH OF ITS DESCENT.

3. When the lift is fully lowered, ensure that the motorcycle is standing on its wheels and is supported in the upright position.

CARE AND MAINTENANCE

1. Keep the lift clean and lubricate all moving parts with oil if required.
2. Before each use check for broken, cracked, bent, or loose parts, or any visible damage to welds, saddle, frame and all parts including pins and other fasteners. If any suspect item is found remove jack from service and take necessary action to remedy the problem.
3. DO NOT use the lift if believed to have been subjected to abnormal load or shock. Inspect and take appropriate action.
4. Store the lift in its lowest position in a dry location.

COMPONENT PARTS



No	Description
1	Table
2	Bolt M12 x 50
3	Washer 12
4	Saddle
5	Adjustable plate
6	Bolt M10 x 25
7	Box Wrench
8	Lifting screw
9	Inside fixing spindle
10	Circlip
11	Base plate
12	Outer frame roller

No	Description
13	Washer 20mm
14	Outer lifting arm
15	Connecting spindle
16	Centre spacer
17	Roller
18	Inside lifting arm
19	Bearing
20	Front mounting block
21	Nut
22	Locknut
23	Rear mounting block
24	Nut M8

DECLARATIONS OF CONFORMITY



Clarke[®]
INTERNATIONAL
Fitzwilliam Hall, Fitzwilliam Place, Dublin 2

DECLARATION OF CONFORMITY

This is an important document and should be retained.

We hereby declare that this product(s) complies with the following directive(s):

2006/42/EC Machinery Directive

The following standards have been applied to the product(s):

EN 1483:2010

The technical documentation required to demonstrate that the product(s) meet(s) the requirement(s) of the aforementioned directive(s) has been compiled and is available for inspection by the relevant enforcement authorities.

The CE mark was first applied in: 2022

Product Description:

Mechanical Motorcycle Table Lift (500kg)

Model number(s):

CML6

Serial / batch Number:

N/A

Date of Issue:

02/08/2022

Signed:

J.A. Clarke
Director

CML6/CE Clarke.DOC (8/02/22)

Page 1 of 1



Clarke[®]
INTERNATIONAL
Hemmall Street, Epping, Essex CM16 4LG

DECLARATION OF CONFORMITY

This is an important document and should be retained.

We hereby declare that this product(s) complies with the following statutory requirement(s):

Supply of Machinery (Safety) Regulations 2008

The following standards have been applied to the product(s):

EN 1483:2010

The technical documentation required to demonstrate that the product(s) meet(s) the requirement(s) of the aforementioned legislation has been compiled and is available for inspection by the relevant enforcement authorities.

The UKCA mark was first applied in: 2022

Product Description:

Mechanical Motorcycle Table Lift (500kg)

Model number(s):

CML6

Serial / batch Number:

N/A

Date of Issue:

02/08/2022

Signed:

J.A. Clarke
Director

CML6/UKCA Clarke.DOC (8/02/22)

Page 1 of 1

A SELECTION FROM THE VAST RANGE OF

Clarke®

QUALITY PRODUCTS



AIR COMPRESSORS

From DIY to industrial, Plus air tools, spray guns and accessories.

GENERATORS

Prime duty or emergency standby for business, home and leisure.

POWER WASHERS

Hot and cold, electric and engine driven - we have what you need

WELDERS

Mig, Arc, Tig and Spot. From DIY to auto/industrial.

METALWORKING

Drills, grinders and saws for DIY and professional use.

WOODWORKING

Saws, sanders, lathes, mortisers and dust extraction.

HYDRAULICS

Cranes, body repair kits, transmission jacks for all types of workshop use.

WATER PUMPS

Submersible, electric and engine driven for DIY, agriculture and industry.

POWER TOOLS

Angle grinders, cordless drill sets, saws and sanders.

STARTERS/CHARGERS

All sizes for car and commercial use.



PARTS & SERVICE: 0208 988 7400

Parts Enquiries
Parts@clarkeinternational.com

Servicing & Technical Enquiries
Service@clarkeinternational.com

SALES: UK 01992 565333 or Export 00 44 (0)1992 565335

Clarke INTERNATIONAL Hemnall Street, Epping, Essex CM16 4LG
www.clarkeinternational.com