

A SELECTION FROM THE VAST RANGE OF

ELDORADO®

QUALITY PRODUCTS



AIR COMPRESSORS

From DIY to industrial. Plus air tools, spray guns and accessories.

GENERATORS

Prime duty or emergency standby for business, home and leisure.

POWER WASHERS

Hot and cold, electric and engine driven - we have what you need.

WELDERS

Mig, Arc, Tig and Spot. From DIY to auto/industrial.

METALWORKING

Drills, grinders and saws for DIY and professional use.

WOODWORKING

Saws, splitters, lathes, mortisaws and dust extractors.

HYDRAULICS

Cranes, body repair kits, transmission jacks for all types of workshop use.

WATER PUMPS

Submersible, electric and engine driven for DIY, agriculture and industry.

POWER TOOLS

Angle grinders, cordless drill sets, saws and sanders.

STARTER/CHARGERS

All sizes for car & commercial use.

ELDORADO INTERNATIONAL

Hemmill Street, Epping, Essex, CM16 4LG, ENGLAND

Telephone: 01992 565333 Fax: 01992561562

e-mail: Partselect@eldoradointernational.com

For spares and servicing, please contact your nearest dealer, or Clarke International on 020-69988-7400

ELDORADO®

WOODWORKER



DUST/CHIP EXTRACTOR

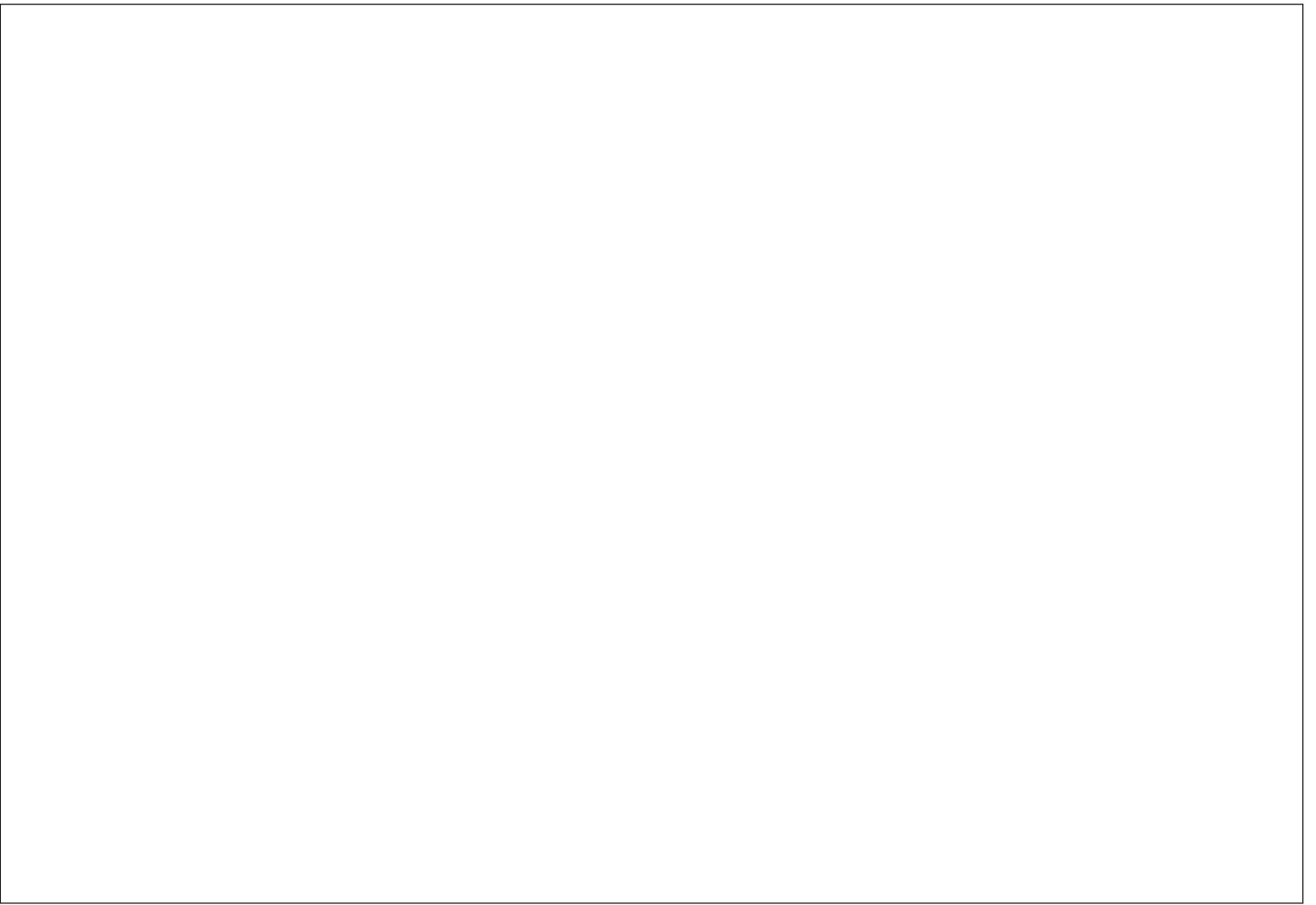
MODEL No. CDE7B

Part No. 6470305

OPERATING & MAINTENANCE

INSTRUCTIONS







IMPORTANT

Before commencing please check contents and advise immediately of any shortages.

Component Check List (figures in brackets refer to parts list on page 12)

Checklist

- 1 off Operating Instructions.
- 1 off Collector Support, (35).
- 1 off Collector Body & Motor, (11 & 18).
- 1 off Collector, (23).
- 1 off Base Plate, (4).
- 4 off Castors, (1).
- 1 off Cloth Filter Bag, (25).
- 1 off Cloth Dust Bag, (24).
- 1 off Gasket, (22).
- 2 off Bag Support Rods, (31).
- 1 off Adapter, (37).
- 1 x plastic bag containing fittings.

Please note that the details and specifications contained herein are correct at the time of going to print. However CLARKE International reserve the right to change specifications at any time without prior notice. Always consult the machines data plate

Please read these instructions carefully before operating the tool

Thank you for purchasing this **CLARKE** wood chip and dust extractor. Before using the device, please read this manual thoroughly and carefully follow all instructions given. This is for your own safety and that of others around you, and is also to help you achieve a long and trouble free service from your new equipment. Your new extractor is designed to collect wood chips and dust only. **DO NOT** use to pick up flammable or readily combustible material, hot ashes, coals etc., or use in the presence of explosive liquids or vapour.

CLARKE GUARANTEE

This CLARKE product is guaranteed against faulty manufacture for a period of 12 months from the date of purchase. Please keep your receipt as proof of purchase. This guarantee is invalid if the product is found to have been abused or tampered with in any way, or not used for the purpose for which it was intended. Faulty goods should be returned to their place of purchase, no product can be returned to us without prior permission. This guarantee does not affect your statutory rights.

Contents

Safety Precautions..... 4
 Electrical Connections 6
 Assembly 7
 Operation..... 9
 Maintenance 9
 Trouble Shooting..... 10
 Parts List & Diagram 11

Specifications

Model: CDE7B
 Part No: 6470305
 Voltage: 230 v ac
 Power Rating: 1HP
 Fuse Rating: 13amp
 Motor Speed: 2970 RPM
 Noise Level: 52~65 dB(A)
 Dust/Filter Bags: 5 micron
 Operating Temperature: -10~40°
 Weight: 27kg
 Dimensions: 650X420X450mm

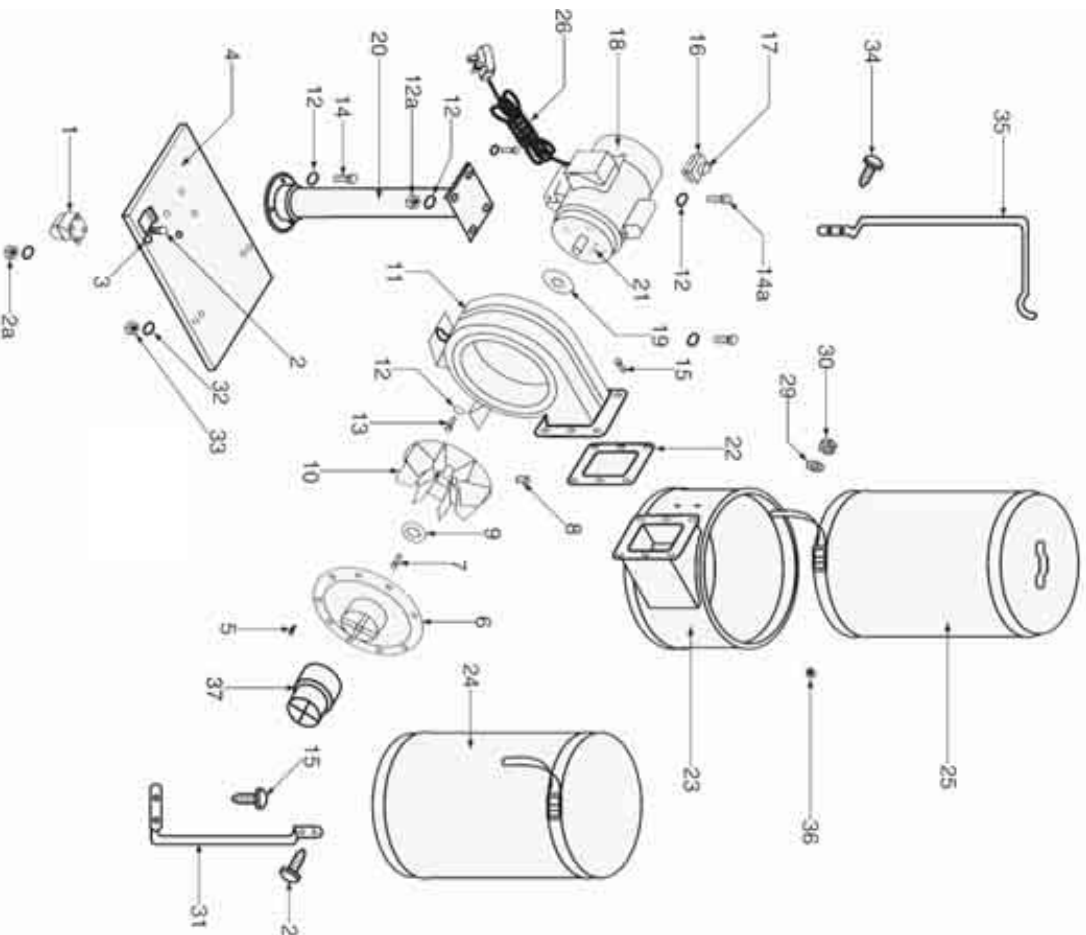
Parts List

Item	Part No	Description	Qty
1	QB70001	Castor	4
2	QB70002	Pan Head Screw~M6x16	16
2a	QB70002a	Nut	16
3	QB70003	Spring Washer~Ø6	16
4	QB70004	Base Plate	1
5	QB70005	Pan Head Screw~M5x10	12
6	QB70006	Inlet Cover	1
7	QB70007	Socket Head Screw~M6x20	1
8	QB70008	Self Screw~M8x10	2
9	QB70009	Washer	1
10	QB70010	Turbo Fan	1
11	QB70011	Collector Body	1
12	QB70012	Washer~Ø8	18
12a	QB70012a	Nut~M8	6
13	QB70013	Hex Head Screw	6
14	QB70014	Hex Head Screw	12
14a	QB70014a	Hex Head Screw	8
15	QB70015	Hex Head Screw	6
16	QB70016	Switch	1
17	QB70017	Key Switch	1
18	QB70018	Motor	1
19	QB70019	Gasket	1
20	QB70020	Column & Motor Plate	1
21	QB70021	Key~5x5x30	1
22	QB70022	Packing	1
23	QB70023	Collector	1
24	QB70024	Collection Bag	1
25	QB70025	Filter Bag	1
26	QB70026	Power Cord	1
29	QB70029	Spring Washer	1
30	QB70030	Nut	1
31	QB70031	Bracket	1
32	QB70032	Washer	2
33	QB70033	Nut	2
34	QB70034	Screw	2
35	QB70035	Pole	1
36	QB70036	Nut	2
37	QB70037	Adapter	1

IMPORTANT:

The use of parts other than CLARKE replacement parts may result in safety hazards, decreased tool performance and may invalidate your warranty.

Parts Diagram



PARTS & SERVICE TEL: 020 8988 7400
 or e-mail as follows:
PARTS: Parts@clarkinternational.com
SERVICE: Service@clarkinternational.com

Safety Precautions

WARNING: *As with all machinery, there are certain hazards involved with their operation and use. Exercising respect and caution will considerably lessen the risk of personal injury. However, if normal safety precautions are overlooked or ignored, personal injury to the operator or damage to property, may result.*

1. **ALWAYS** Learn the machines' applications, limitations and the specific potential hazards peculiar to it: Read and become familiar with the entire operating manual.
2. **ALWAYS** use a face or dust mask if operation is particularly dusty.
3. **ALWAYS** check for damage. Before using the machine, any damaged part, should be checked to ensure that it will operate properly, and perform its intended function. Check for alignment of moving parts, breakage of parts, mountings, and any other condition that may affect the machines' operation. Any damage should be properly repaired or the part replaced. If in doubt, **DO NOT** use the machine. Consult your local dealer.
4. **ALWAYS** disconnect the tool/machine from the power supply before servicing and when changing accessories, removing and emptying dust bag etc.
5. **ALWAYS** wear safety goggles, manufactured to the latest European Safety Standards. Everyday eyeglasses do not have impact resistant lenses, they are not safety glasses.
6. **ALWAYS** keep work area clean. Cluttered areas and benches invite accidents.
7. **ALWAYS** ensure that adequate lighting is available. A minimum intensity of 300 lux should be provided. Ensure that lighting is placed so that you will not be working in your own shadow.
8. **ALWAYS** keep children away. All visitors should be kept a safe distance from the work area, especially whilst operating the machine.
9. **ALWAYS** maintain machine in top condition. Keep tools/machines clean for the best and safest performance. Follow maintenance instructions.
10. **ALWAYS** handle with extreme care do not carry the tool/machine by its' electric cable, or yank the cable to disconnect it from the power supply.
11. **ALWAYS** ensure the switch is off before plugging in to mains. Avoid accidental starting.
12. **ALWAYS** concentrate on the job in hand, no matter how trivial it may seem. Be aware that accidents are caused by carelessness due to familiarity.
13. **ALWAYS** keep your proper footing and balance at all times don't overreach. For best footing, wear rubber soled footwear, keep floor clear of oil, scrap wood, etc.



14. **ALWAYS** wear proper apparel, loose clothing or jewellery may get caught in moving parts, wear protective hair covering to contain long hair.
15. **ALWAYS** use recommended accessories, the use of improper accessories could be hazardous.
16. **ALWAYS** remove plug from electrical outlet when adjusting, changing parts, or working on the machine.
17. **NEVER** operate machine while under the influence of drugs, alcohol or any medication.
18. **NEVER** leave machine running unattended, turn power off. Do not leave the machine until it comes to a complete stop.
19. **NEVER** force the machine, it will do a better and safer job at the rate for which it was designed.
20. **NEVER** use power tools in damp or wet locations or expose them to rain. Keep your work area well illuminated, do not use in explosive atmosphere (around paint, flammable liquids etc.). Avoid dangerous environment.



Additional Safety Precautions

1. **Do not** use if the electric cable, plug, collection bag or the motor, is in poor condition.
 2. **Do not** pick up flammable or readily combustible material, hot ashes, coals etc., or use in the presence of explosive liquids or vapour.
 3. **Do not** use in enclosed areas where flammable, explosive or toxic vapours are given off, by oil based paints, paint thinner, petrol etc.
 4. **Do not** pick up burning cigarettes or other smoking substances.
 5. **Do not** change or clean the dust bag , or carry out any servicing, without first disconnecting the machine from the mains supply.
 6. **Do not** allow the ventilation slots in the motor to become blocked.
 7. **Always** keep Guards/Covers in place and in a serviceable condition.
 8. **Always** keep the mains cable well away from the machine and ensure an adequate electrical supply is close to hand so that the operation is not restricted by the length of cable.
 9. **Always** switch the machine OFF immediately the task is completed. Ensure the electric cable and hose is stowed away and not left as a hazard, i.e. for others to trip over.
 10. **Never** leave machines running unattended. Turn power OFF and wait until the machine has come to a full stop before leaving.
 11. **EARTH ALL MACHINES.** If the machine is equipped with a three-pin plug, it should be plugged into a three-pin earthed socket. **NEVER** remove the earth pin.
- Additionally, please keep these instructions in a safe place for future reference.**

CLARKE
INTERNATIONAL

Trouble Shooting

Problem	Probable Cause	Suggested Remedy
Motor will not run.	1. Defective cord, plug, switch and/or motor. 2. Fuse blown.	1. Consult your nearest Clarke dealer. 2. Replace fuse.
Excessive sawdust in the air.	1. Loose connectors. 2. Filter/dust bag worn or damaged.	1. Tighten connectors. 2. replace bag.
Excessive Impeller noise.	1. Impeller dirty, (sawdust build up). 2. Loose or impeller rubbing.	1. Switch OFF and isolate from mains, clean impeller. 2. Consult your nearest Clarke dealer.
Excessive noise.	1. Defective motor. 2. Loose fan.	1. Have motor checked by qualified service technician.
Motor fails to develop full power.	1. Circuit overloaded. 2. Undersize extension lead, too long or not fully unwound.	1. Use on separate circuit. 2. Change extension lead.
Motor starts slowly/fails to reach full speed.	1. Low voltage. 2. Windings burned out or open circuit.	1. Request voltage check from power company. 2. Have motor repaired or replaced.
Motor does not start when ON switch is pressed	1. Switch contacts burnt. 2. Start capacitor faulty.	1. Have switch replaced. 2. Have capacitor replaced.

DO NOT attempt to carry out repairs yourself, unless you are fully competent, all work must be carried out by a qualified technician

CLARKE
INTERNATIONAL

Operation

DO NOT OPERATE WITHOUT ALL PARTS IN PLACE!

Do not attempt to clean, remove/attach dust bags or carry out any servicing to the unit whilst it is in operation, ALWAYS ensure it is switched off and isolated from the mains by removing the plug from the socket.

CAUTION : The blower housing contains a high speed fan blade that could amputate fingers, grab loose clothing and neckties etc. and propel dust at very high velocities.

A suitable length of flexible hose can be fitted to the collector inlet using the adapter supplied, (Item No 37 in the parts list on page 12). The collector can also be connected directly to the woodworking machine being used, using the appropriate hose and adapters which can be purchased separately from your nearest Clarke dealer.

To switch ON, press the switch cover (see fig. 8) down and slide in direction of arrow and lift up, this will expose the ON/OFF buttons. (see fig .9) Push the ON button, (green button 'I'). DO NOT close the cover as this will switch the machine OFF again.

NOTE : In case of emergency, close the switch cover quickly, cover will latch down and motor will be switched OFF. To switch OFF normally, press OFF button, (red button 'O'), always close cover to prevent accidental starting.



Fig. 8



Fig. 9

Maintenance

Always inspect the machine before use, and ensure it is in top condition.

Excessive dust in the motor can cause overheating, ensure all air vents are clear to avoid eye injury or adverse reaction to dust, clean the machine by blowing out the air vents using low pressure compressed air, where possible.

Check the power cable to ensure it is sound and free from cracks, bare wires etc. avoid using solvents when cleaning plastic parts, most plastics are susceptible to damage from the various types of commercial solvents.

All bearings etc., in this tool are lubricated with a sufficient amount of high grade lubricant for the tools lifetime under normal operating conditions, therefore no further lubrication is required.

Occasionally it will be necessary to manually clean the impellor, to do this proceed as follows.

1. Switch OFF and isolate from the main electrical supply by removing the plug from the socket, ensure it is not possible to be plugged back in accidentally by somebody else by tying up etc, attach a warning label.
2. Remove 12 screws securing the inlet cover, (6), and remove cover to expose the impellor.
3. Clean impellor using a brush, cleaning cloth, vacuum cleaner and/or low pressure compressed air.

CAUTION : Beware of sharp edges.

If any servicing (other than the above cleaning) becomes necessary, it should be carried out by an authorised service centre.

NOTE : The speed of this motor cannot be regulated or changed.

NEVER leave unattended with cover removed

Electrical Connections

This appliance is fitted with a standard, 230 Volt (50Hz) BS 1363 approved 13 amp plug, for connection to a standard domestic 13 Amp electrical supply. We strongly recommend that connection be via a Residual Current Device (RCD).

WARNING! THIS APPLIANCE MUST BE EARTHED

IMPORTANT: Should the plug be replaced, it is important to note that the wires in the mains lead are coloured in accordance with the following code

Green & Yellow Earth
Blue Neutral
Brown Live

As the colours of the flexible lead of this appliance may not correspond with the coloured markings identifying terminals in your plug proceed as follows:

- Connect GREEN & YELLOW coloured cord to plug terminal marked with a letter "E" or Earth symbol " $\frac{\text{—}}{\text{—}}$ " or coloured GREEN or GREEN & YELLOW.
- Connect BROWN coloured cord to plug terminal marked with a letter "L" or coloured RED.
- Connect BLUE coloured cord to plug terminal marked with a letter "N" or coloured BLACK.

If this appliance is fitted with a plug which is moulded onto the electric cable (i.e. non-rewirable) please note:

1. The plug must be thrown away if it is cut from the electric cable. There is a danger of electric shock if it is subsequently inserted into a socket outlet.
2. Never use the plug without the fuse cover fitted.
3. Should you wish to replace a detachable fuse carrier, ensure that the correct replacement is used (as indicated by marking or colour code).

Fuse Rating

The fuse in the plug must be replaced with one of the same rating (13 amps) and this replacement must be ASTA approved to BS1362.

IMPORTANT:

If a cable extension is needed, it is essential to comply with the following data.

Voltage	Extension length	Cable section
230V	Up to 20m	2.5mm ²
230V	From 20 to 50m	4mm ²

Assembly (Figures In Brackets Refer To Parts List On Page 12)

TOOLS REQUIRED

- Phillips screwdriver,
- Flat Bladed Screwdriver,
- 8mm spanner,
- 10mm spanner,
- 13mm spanner.

To assemble your dust collector proceed as follows:

1. Lay components out neatly.
2. Place the base plate (4), upside down and fit the four castors (1), using screws washers and nuts supplied, fit all screws etc. finger tight only at first, once all screws are in place proceed to tighten them using a screwdriver and spanner, (DO NOT OVERTIGHTEN).

3. Attach column and motor plate, (20) to the base plate using bolts and washers supplied, (DO NOT OVERTIGHTEN). When viewed from the back, ensure threaded holes in side of motor plate are on the right hand side, (see Fig. 1).



NOTE :
Before installing the motor and collector body, (11 & 18) ensure the two hex head screws and locknuts are fitted to motor plate, (see Fig. 2), it is important that the bolt heads do not protrude more than 20mm at this stage, leave loose for adjustment later.

4. Attach the motor and collector body, (11 & 18) to the motor plate (see Fig. 3), using nuts, bolts and washers supplied. Centralise the motor in both directions before lightly tightening the nuts and bolts, adjust bolts, ref Fig. 2 so that the heads butt up to the collector body, tighten the locknuts.

Fit hose adapter, (37) onto inlet cover using screws supplied, (see Fig. 3a) this is safety requirement and must be adhered to, as this part also prevents finger access into the impeller.



5. Attach the collector (23) to the collector body as shown in Fig. 4, using 6 hex head screws and washers, (supplied), (DO NOT OVERTIGHTEN). Ensure gasket, (22) is fitted between the two units.



Fig. 4

6. Attach the two bag support rods, (31) using screws, nuts and washers supplied, one on either side of the collector, (see Fig. 5). It may be necessary to reposition the motor to align the rods vertically etc. Once rods are in place and secured, retighten nuts and bolts securing motor to motor plate.

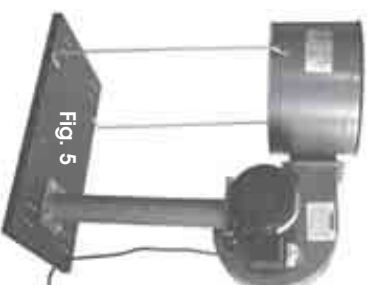


Fig. 5

7. Attach the collector support, (35) using screws and washers supplied, (see Fig. 6).



Fig. 6

Fit the cloth filter bag to the top of the collector by hanging the loop onto the top of the collector support, and fasten around the top rim of the collector with one of the metal straps, (see Fig. 7).

NOTE : Strap should be threaded through bag rim first. Fit the collection bag onto the bottom rim of the collector using the second strap as above, (see Fig. 7) Your dust collector is now ready for use.



Fig. 7