

CELANOR®



ELECTRIC TILE CUTTER

Model No. ETC6

Part No. 3400500

OPERATING & MAINTENANCE INSTRUCTIONS



0305

Thank you for purchasing this Clarke Tile Cutting Machine.

The ETC6 tile cutter incorporates a 180mm sintered diamond cutting disk and will make straight cuts on tiles with a maximum cutting depth of 38mm.

The table may be tilted so that tiles may be cut to any angle up to 45 degrees. The maximum cutting depth at 45 degrees is 20mm.

Please read this manual thoroughly before use. This will ensure the safety of both yourself and those around you, and will also ensure long and trouble free service from your Tile Cutter.

GUARANTEE

This product is guaranteed against faults in manufacture for 12 months from purchase date. Please keep your receipt as proof of purchase.

This guarantee is invalid if the product has been abused or tampered with in any way, or not used for the purpose for which it is intended. The reason for return must be clearly stated.

This guarantee does not affect your statutory rights.

SPECIFICATIONS

| | |
|----------------------------------|----------------------|
| Motor | 230V, 50 Hz 1ph |
| Power Rating | 450Watts |
| Running Current | 1.9Amps |
| Speed (No load) | 2990RPM |
| Fuse Rating | 13 Amps |
| Table Dimensions | 385x380mm |
| Weight (Net) | 9.2kg |
| Cutting Angle | 0 - 45 degrees |
| Cutting Depth at 90° | 38mm |
| Cutting Depth at 45° | 20mm |
| Cutting Disk Diameter | 180mm |
| Cutting Disk Bore | 22mm |
| Cutting Disk Part Number | 6490640 |
| Sound Power Level | 100 Lw(A) |
| Sound Pressure Level | 87dB(A) |
| Vibration | <2.5m/s ² |
| Overall Dimensions (LxWxH) | 385x385x220mm |
| Duty Cycle | S3 40%** |
| Part Number | 3400500 |

**** Duty cycle - 4mins ON followed by 6mins OFF in any 10 minute period**

GENERAL SAFETY PRECAUTIONS

Common sense applies to the use of both this and any other electric power tool. In particular we bring the following points to your attention.

- ✓ **ALWAYS** keep the work area clean, well lit and uncluttered.
- ✓ **ALWAYS** place the machine on a firm steady base and at a comfortable working height.
- ✓ Apart from the water trough which is provided to wet the cutting disk, **ALWAYS** check to ensure that all other parts of the machine and the surrounding work area are kept dry.
- ✓ **ALWAYS** use in a well ventilated area. Never operate the saw in the presence of inflammable vapours.
- ✓ **ALWAYS** keep children well clear of the work area at all times.
- ✓ **ALWAYS** examine the cutting disk before use and replace if worn.
- ✓ **ALWAYS** allow the motor freedom, so that the cutting disk will be cutting at, or close to its maximum speed.
- ✓ **ALWAYS** use Clarke general purpose safety goggles to protect the eyes from flying particles.
- ✓ **ALWAYS** take suitable precautions in respect of loose clothing, long hair and jewellery, as these are potential hazards which could get caught up in the moving parts of this high speed machine.
- ✓ **ALWAYS** use a Clarke face mask to prevent inhalation of any dust which may be produced.
- ✓ **ALWAYS** disconnect from the power supply before making any adjustments to the machine.
- ✓ The use of work gloves is recommended, providing these allow you to retain sufficient feel and sensitivity whilst operating the machine.
- ✗ **NEVER** force the cutting disk if it is reluctant to cut properly or tends to slow down.
- ✗ **NEVER** use this machine for cutting metal or vegetable matter. This machine is for cutting stone, ceramics, marble and similar hard material **ONLY**.
- ✗ **NEVER** attempt to repair the mains cable. If it, or any part of the switch assembly becomes damaged, then it must be replaced.
- ✗ **NEVER** apply side thrust to the cutting disk. i.e. try to cut on one side of the disk only.
- ✗ **NEVER** operate this machine with the Disk Guard removed.
- ✗ **DO NOT** exceed the Duty Cycle - See Specifications

ELECTRICAL CONNECTIONS

WARNING!

If the power cable is worn or cut, or damaged in any way, have it replaced immediately to avoid shock or fire hazard.

Connect the mains lead to a 230 volt (50Hz) domestic electrical supply via a standard 13 amp BS 1363 plug fitted with a 13 amp fuse, or a suitably fused isolator switch.

WARNING! THIS APPLIANCE MUST BE EARTHED.

IMPORTANT: The wires in the mains lead are coloured in accordance with the following code:

Green & Yellow - **Earth**
Blue - **Neutral**
Brown - **Live**

As the colours of the flexible cord of this appliance may not correspond with the coloured markings identifying terminals in your plug, proceed as follows:

- Connect GREEN & YELLOW coloured cord to plug terminal marked with a letter 'E' or Earth symbol "⏏", or coloured GREEN or GREEN & YELLOW.
- Connect BROWN coloured cord to plug terminal marked letter 'L' or coloured RED.
- Connect BLUE coloured cord to plug terminal marked letter 'N' or coloured BLACK.

We strongly recommend that this unit is connected to the mains supply via a Residual Current Device (RCD).

IMPORTANT!

If this appliance is fitted with a plug which is moulded onto the electric cable (i.e. non- re-wireable) please note:

1. The plug must be thrown away if it is cut from the electric cable. There is a danger of electric shock if it is subsequently inserted into a socket outlet.
2. Never use the plug without the fuse cover fitted.
3. Should you wish to replace a detachable fuse carrier, ensure that the correct replacement is used (as indicated by marking or colour code).
4. Replacement fuse covers can be obtained from your local dealer or most electrical stockists.

Fuse Rating

The fuse in the plug must be replaced with one of the same rating (**13 amps**) and this replacement must be ASTA approved to BS1362.

Extension Cable

If an extension lead is needed, ensure the conductors have a diameter at least equal to that of the cable fitted to the machine. Always unwind the extension cable fully before use.

INSTALLATION

Provision is made so that the Tile Cutter may be semi-permanently fixed to a workbench or table, using suitable bolts in the two holes in the base of the machine.

If a permanent location is not feasible or desirable, always ensure its temporary location is flat and even and at a convenient height with adequate light.

OPERATION

1. With the machine disconnected from the mains supply, measure the tile or piece of material to be cut and proceed to adjust:
 - A. The angle of the table - which can be adjusted 0° to 45° for mitre edge cuts if required.

NOTE:

If bevel cuts are made with the larger portion of the tile on the right side of the cutting disk, i.e. on the 'downward' slope side of the disk, there may be too little room for the parallel fence. This operation must therefore be carried out freehand. DO NOT exert side pressure on the cutting disk.

- B. The position of the fence on the table top. To ensure accurate cuts, check the alignment of the fence by referring to the built in calibrations which are set into each end of the table top.

Retighten all locking knobs securely to ensure secure positions for both the table and the fence.

2. Fill the water trough located underneath the table with just sufficient water so that the edge of the cutting disk can be kept constantly wet. Do not overfill as this can cause an unnecessary mess. Check the water level **constantly** during use and top up as necessary.
3. Start the machine by pressing the green button on the switch panel, marked 'I'.
4. Holding the material firmly at all times against the parallel fence, or held in the mitre gauge as required, move it steadily over the table, into the cutting edge of the disk...WITH THE GLAZED SIDE OF THE TILE FACING UP.

DO NOT force the tile through the disk. Keep the speed of the disk as near to its maximum speed as possible.

Always cut in a straight line and **DO NOT** attempt to cut a curved line.

Keep hands well clear of the disk whilst it is in motion. Remove all pieces using a piece of wood, or similar, before making the next cut.

5. To stop the machine at any time, press the red button on the switch panel marked 'O'.

Always do this as soon as cutting has been completed, so as not to exceed the Duty Cycle (see Specifications) and before making any adjustments to the machine.

NOTE:

In order to get the feel of the machine and reduce the possibility of wastage, we recommend that trial cuts are made first with surplus or scrap material of a similar type to that to be cut.

CHANGING THE CUTTING DISK

1. Ensure that the machine is switched off and disconnected from the mains.
2. First remove the water trough, then remove the two screws securing the cutting disk cover, beneath the table, and withdraw the cover.
3. The drive shaft has two flats milled on its end, allowing a spanner (supplied) to be used to hold the shaft whilst undoing the disk securing nut, again using the spanner supplied.

Pull off the Disk Flange, followed by the disk.

4. Take this opportunity to clean the drive-shaft of any foreign matter.
5. Replace the cutting disk ensuring the direction of rotation is correct. If in doubt, take note that the shaft rotates in an anticlockwise direction, as you look directly at it. The disk must be fitted so that the arrow, on the blade, points in the SAME direction.
6. Replace the disk flange and screw on the nut, which should then be 'nipped up'. DO NOT overtighten.
7. Replace the disk cover.

MAINTENANCE

When carrying out servicing or maintenance tasks...ALWAYS disconnect the machine from the mains supply.

Always rotate the cutting disk by hand before use to check for cracks or distortion. If any damage is detected, renew the disk.

Check the power cable to ensure it is in perfect condition.

Drain the water tank after use and ensure it is dry before storing.

ALWAYS maintain the machine in top condition. When not in use, keep it covered, and store in a dry place, not exposed to the elements.

DECLARATION OF CONFORMITY

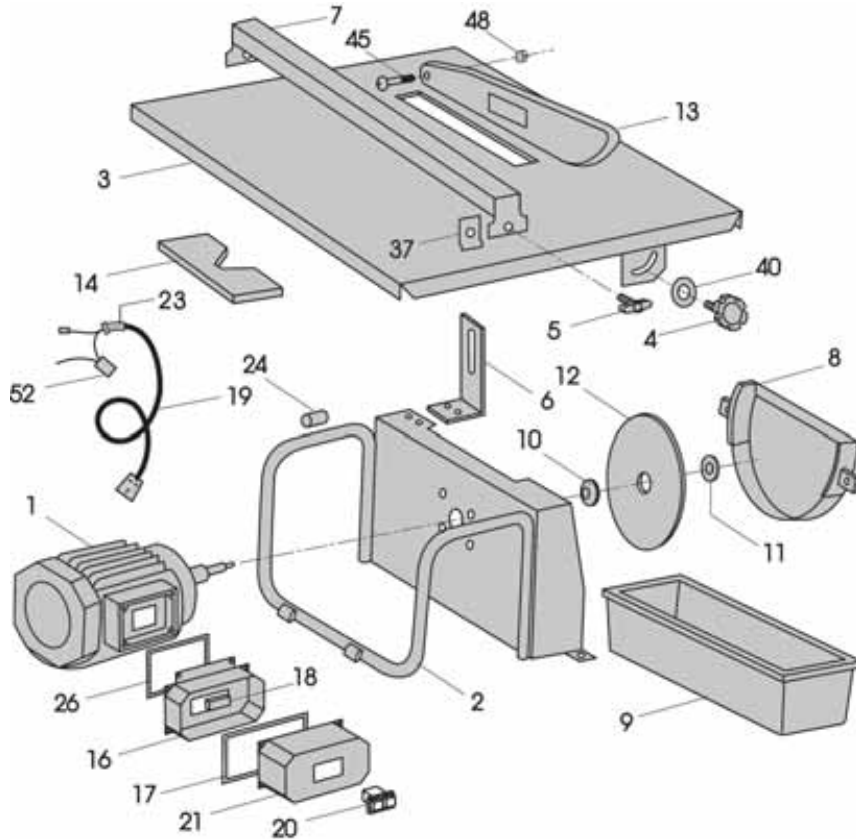
We declare that this product conforms to the following standards/directives

89/392/CEE, modified by 98/68/CEE (Machinery Directive)

93/68/CEE modified by EN61029-1 (LVD)

98/336/CEE modified by 93/68/CEE (EMC)

PARTS LIST AND DIAGRAM



| No. | Description | Part No. | No. | Description | Part No. |
|-----|---------------------|----------|-----|--------------------|----------|
| 1 | Motor Complete | RWETC601 | 16 | Switch Box (Inner) | RWETC616 |
| 2 | Tubular Frame | RWETC602 | 17 | Gasket | RWETC617 |
| 3 | Table | RWETC603 | 18 | Capacitor | RWETC618 |
| 4 | Tile Guide Knob | RWETC604 | 19 | Cable loom | RWETC619 |
| 5 | Table Adjuster Knob | RWETC605 | 20 | Switch | RWETC620 |
| 6 | Blade Guard Support | RWETC606 | 21 | Switch Box (Outer) | RWETC621 |
| 7 | Tile Guide | RWETC607 | 23 | Cable Grommet | RWETC623 |
| 8 | Lower Blade Guard | RWETC608 | 24 | Plastic Bushing | RWETC624 |
| 9 | Water Tank | RWETC609 | 26 | Gasket | RWETC625 |
| 10 | Inner Flange | RWETC610 | 37 | Clamp Plate | RWETC637 |
| 11 | Outer Flange | RWETC611 | 40 | Flat Washer | RWETC640 |
| 12 | Cutting Disc | 6490640 | 45 | Screw | RWETC645 |
| 13 | Upper Blade Guard | RWETC613 | 48 | Self Locking Nut | RWETC648 |
| 14 | Tile Angle Guide | RWETC614 | 52 | Thermal Capacitor | RWETC652 |