



**WIZ - MINI
AIR COMPRESSOR**



0206

**OPERATING & MAINTENANCE
INSTRUCTIONS**

Thank you for purchasing your new Clarke WIZ Mini Air Compressor, which is not intended for general outdoor use. If it is used outdoors, it must be protected for the elements at all times.

Before attempting to operate the compressor, please read this instruction manual thoroughly and carefully follow all directions given. This is for your own safety and that of others around you, and to help you achieve long and trouble free service from your compressor.

GUARANTEE

This product is guaranteed against faults in manufacture for 12 months from purchase date. Please keep your receipt as proof of purchase.

This guarantee is invalid if the product has been abused or tampered with in any way, or not used for the purpose for which it is intended.

The reason for return must be clearly stated.

This guarantee does not affect your statutory rights

CONTENTS

Safety Precautions	4
Electrical Connections	5
Operation	6
Shutting Down	6
Maintenance	6
Fault Finding	7
Specifications	7
Parts List and Diagram	8 - 9

PARTS & SERVICE CONTACTS

For Spare Parts and Service, please contact your nearest dealer,
or CLARKE International, on one of the following numbers.

PARTS & SERVICE TEL: 020 8988 7400

PARTS & SERVICE FAX: 020 8558 3622

or e-mail as follows:

PARTS: Parts@clarkeinternational.com

SERVICE: Service@clarkeinternational.com

SAFETY PRECAUTIONS

WARNING!

As with all machinery, there are certain hazards involved with their operation and use. Exercising respect and caution will considerably lessen the risk of personal injury. However, if normal safety precautions are overlooked, or ignored, personal injury to the operator, or damage to property may result. It is in your own interest to read and pay attention to the following rules:

1. COMPRESSED AIR IS DANGEROUS, NEVER direct a jet of air at people or animals, and NEVER discharge compressed air against the skin.
2. Electrical or mechanical repairs should only be carried out by a qualified engineer. If problems occur, contact your Clarke dealer.
3. Before carrying out any maintenance, ensure the compressor is disconnected from the mains supply
4. DO NOT operate in wet or damp conditions. Keep the machine dry at all times. Similarly, a clean atmosphere will ensure efficient operation. Do not use in dusty or otherwise dirty locations.
5. Some of the metal parts can become quite hot during operation. Take care not to touch these until the machine has cooled down.
6. ALWAYS ensure that there is adequate ventilation when spraying and keep clear of any possible source of ignition.
7. Protect yourself. Think carefully about any potential hazards which may be created by using the compressor and use the appropriate protection. e.g. goggles will protect your eyes from flying particles. Face masks will protect you against paint spray and/or fumes.
8. Before spraying any material always consult paint manufacturers instructions for safety and usage.
9. Do not exert any strain on electrical cables and ensure that air hoses are not tangled or wrapped around machinery etc.
10. Before disconnecting air hoses or other equipment from your compressor ensure that the compressor is switched off.
11. Make sure that children and animals are kept well away from the compressor and any equipment attached to it.
12. Always ensure that all individuals using the compressor have read and fully understand the Operating Instructions supplied.
13. Ensure that any equipment or tool used in conjunction with your compressor, has a safety working pressure exceeding that of the machine.
14. Always place the compressor on a level surface wherever possible.
15. It is not advisable to carry the compressor when spraying.
16. DO NOT allow the compressor to run unnecessarily ..switch it OFF when the spraying tool is not being used...even for a short time.

ELECTRICAL CONNECTIONS


Connect the mains lead to a standard, 230 Volt (50Hz) electrical supply through an approved 13 amp BS 1363 plug, or a suitably fused isolator switch.

WARNING! THIS APPLIANCE MUST BE EARTHED

IMPORTANT: The wires in the mains lead are coloured in accordance with the following code:

Green & Yellow	-	Earth
Blue	-	Neutral
Brown	-	Live

As the colours of the flexible lead of this appliance may not correspond with the coloured markings identifying terminals in your plug proceed as follows:

- Connect GREEN & YELLOW cord to terminal marked with a letter "E" or Earth symbol  or coloured GREEN or GREEN & YELLOW.
- Connect BROWN cord to terminal marked with a letter "L" or coloured RED.
- Connect BLUE cord to terminal marked with a letter "N" or coloured BLACK.

If this appliance is fitted with a plug which is moulded onto the electric cable (i.e. non-rewireable) please note:

1. The plug must be thrown away if it is cut from the electric cable. There is a danger of electric shock if it is subsequently inserted into a socket outlet.
2. Never use the plug without the fuse cover fitted.
3. Should you wish to replace a detachable fuse carrier ensure that the correct replacement is used (as indicated by marking or colour code).
4. Replacement fuse covers can be obtained from your local dealer or most electrical stockists

FUSE RATING

The fuse in the plug must be replaced with one of the same rating (13 amps) and this replacement must be approved to BS1362.

We recommend that this machine is connected to the mains supply via a Residual Current Device (RCD)

If in any doubt, DO NOT attempt any connections or repairs yourself. Consult a qualified electrician, your Clarke dealer, or CLARKE International Service Department on

020 8988 7400 or e-mail: Service@clarkeinternational.com

OPERATION

NOTE: This machine is designed for use with air bushes or other devices that require a low volume, low pressure air supply.

1. Check that the mains voltage corresponds with that shown on the data label on the crankcase cover of the machine.
Ensure that the ON/OFF switch (see fig. 1) is in the 'OFF' (O) position. Attach the air hose to the outlet on the handle, using either the 1/8" BSP thread, the 1/8" BSP adapter. Attach the air tool.
3. To start the compressor, plug in and switch on at the mains supply then switch the motor switch to the 'ON' (I) position - the motor should start immediately. If it does not...refer to 'Fault Finding' on p.7.

SHUTTING DOWN THE COMPRESSOR

1. To shut off the compressor, simply switch the ON/OFF switch to the OFF (O) position. Always use this switch to shut down the compressor. NEVER USE THE MAINS SWITCH TO STOP MOTOR.
2. Trigger the equipment (spray gun, air tool etc.) to release air from the air hose before disconnecting the hose from the machine.

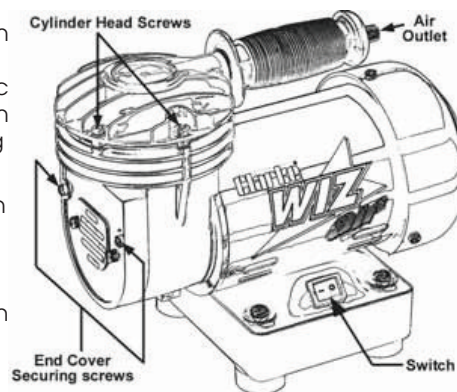
WARNING!

**NEVER UNSCREW A CONNECTION WHILST THE AIR LINE IS UNDER PRESSURE.
ALWAYS MAKE CERTAIN THAT THE AIR TOOL HAS BEEN TRIGGERED**

MAINTENANCE

1. After the first 5 hours of running the compressor, check the cylinder head screws and retighten - equally to 10 lbs ft. if any have worked loose.
2. Every 50 hours (more frequently if used in a dusty environment), clean the air intake filter, by unscrewing the two screws securing the plastic end cover prising off the cover then removing the two screws securing the air filter.

The filter may be gently washed in warm soapy water rinsed and allowed to dry thoroughly before refitting. It should be renewed if badly soiled or contaminated with paint, and if it has been washed two or three times.



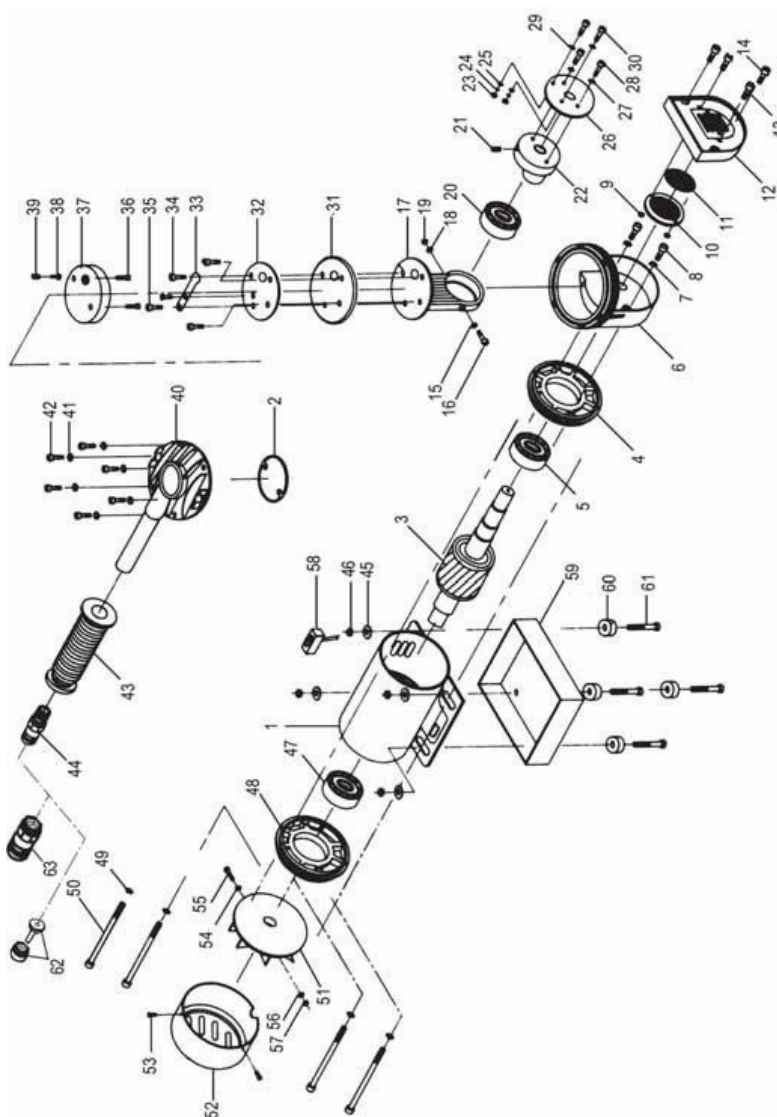
FAULT FINDING

PROBLEM	PROBABLE CAUSE	REMEDY
Low air flow	Air Valve Plate (item 33) or Air Valve (item 38) damaged. Diaphragm (item 31) damaged Cyl Head screws loose (item 42) Air hose leaking	Renew defective Air Valve Plate or Air Valve. Renew Diaphragm Tighten screws to 10 lbf ft Check seal or renew Air Hose
Noisy operation	Cyl Head Screws too tight. Bearing Fault	Back off all screws and tighten equally.. to 10 lbf ft Consult your Clarke dealer
Compressor hums but does not work.	Cyl Head Screws too tight. Armature faulty	Back off all screws and tighten equally.. to 10 lbf ft Consult your Clarke dealer
Compressor does not work.	Armature faulty Thermal cut-out has operated	Consult your Clarke dealer Switch OFF and disconnect. Wait for 15-20 mins and try again.

SPECIFICATIONS

Motor 230V 50Hz 1 Ph
 Power Rating 1/8HP
 Rotational Speed 1500RPM
 Max Pressure 40psi
 Air Displacement 1.58 cuft/min
 Fuse Rating 13amps
 Cyl. Head Bolt torque setting 10 lbf ft
 Weight 4.3kg

PARTS DIAGRAM



PARTS LIST

1	Housing	KLWIZ01	33	Air Valve	KLWIZ33
2	Gasket	KLWIZ02	34	Screw	KLWIZ34
3	Armature	KLWIZ03	35	Screw	KLWIZ35
4	Front Body Cover	KLWIZ04	36	Screw	KLWIZ36
5	Bearing	KLWIZ05	37	Air Valve Plate	KLWIZ37
6	Air tank	KLWIZ06	38	Air Valve	KLWIZ38
7	Washer	KLWIZ07	39	Spring	KLWIZ39
8	Screw	KLWIZ08	40	Air outlet	KLWIZ40
9	Nut	KLWIZ09	41	Washer	KLWIZ41
10	Air Filter Cap	KLWIZ10	42	Screw	KLWIZ42
11	Air Filter	KLWIZ11	43	Handle	KLWIZ43
12	End Cover	KLWIZ12	44	Outlet Connector	KLWIZ44
13	Screw	KLWIZ13	45	Washer	KLWIZ45
14	Screw	KLWIZ14	46	Nut	KLWIZ46
15	Washer	KLWIZ15	47	Bearing	KLWIZ47
16	Screw	KLWIZ16	48	Rear Body Cover	KLWIZ48
17	Plate w/Con-Rod	KLWIZ17	49	Washer	KLWIZ49
18	Washer	KLWIZ18	50	Screw	KLWIZ50
19	Nut	KLWIZ19	51	Fan	KLWIZ51
20	Bearing	KLWIZ20	52	Fan Housing	KLWIZ52
21	Screw	KLWIZ21	53	Screw	KLWIZ53
22	Eccentric Bushing	KLWIZ22	54	Washer	KLWIZ54
23	Nut	KLWIZ23	55	Screw	KLWIZ55
24	Washer	KLWIZ24	56	Washer	KLWIZ56
25	Washer	KLWIZ25	57	Nut	KLWIZ57
26	Set Plate	KLWIZ26	58	Switch Assembly	KLWIZ58
27	Washer	KLWIZ27	59	Base	KLWIZ59
28	Screw	KLWIZ28	60	Mounting Pad	KLWIZ60
29	Washer	KLWIZ29	61	Screw	KLWIZ61
30	Screw	KLWIZ30	62	Air Brush Adapter	KLWIZ62
31	Diaphragm	KLWIZ31	63	1/8 BSP Adapt.	KLWIZ63
32	Set Plate	KLWIZ32			