

Clarke®

air



FILTER/REGULATORS

Models FR1 & FR2

Part Nos 5100800 / 5100802

USER INSTRUCTIONS

GUARANTEE

This CLARKE product is guaranteed against faulty manufacture for a period of 12 months from the date of purchase. Please keep your receipt as proof of purchase. This guarantee is invalid if the product is found to have been abused or tampered with in any way, or not used for its intended purpose.

Faulty goods should be returned to their place of purchase, no product can be returned to us without prior permission. This guarantee does not effect your statutory rights.

ENVIRONMENTAL PROTECTION



Do not dispose of this product with general household waste. Any tools, accessories and packaging should be sorted, taken to a recycling centre and disposed of appropriately.

TECHNICAL SPECIFICATIONS

O/A Dims (Height x Depth x Width)	190 x 75 x 98 mm
Weight	0.5 kg
Gauge diameter	42 mm
Inlet port thread	3/8" BSP (FR1) 1/4" BSP (FR2)
Outlet port thread	2 x 1/4" BSP
Maximum airflow@6.2 bar (90 psi)	40 CFM
Air filter medium	Cotton
Max inlet pressure	12 bar
Max outlet pressure	10 bar
Pressure gauge range	0-180 psi (0-12.2 kg/cm ²)

USER INSTRUCTIONS

This filter/regulator unit is designed to remove up to 95% of foreign matter from the airline and to set the delivery pressure accurately using the gauge.

IMPORTANT! Any airline lubricator required for motorised air tools must be fitted downstream of the filter/regulator.

The filter/regulator should ideally be connected to a fixed airline, or wall mounted using the fixing bracket supplied (FR2 only).

Adjust the delivery air pressure as required, by pulling the regulator cap upwards and then twisting clockwise to increase or anti-clockwise to reduce the outlet pressure, as displayed by the gauge. When the pressure is correct, press the cap back to lock and retain the setting.

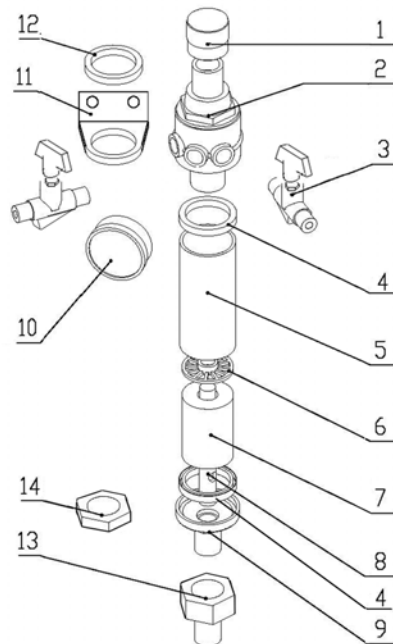
With use the filter will become sufficiently blocked that the air throughput can become severely diminished. It should be removed and cleaned as follows:

1. Shut off the air compressor and vent any remaining air from the airline.
2. Unscrew the lower seat (9) from the filter body (5) using a 3/4" (19 mm) spanner, and remove the filter (7). If this is found to be tight, remove the filter/regulator from the installation & grip the regulator body securely in a vice.
3. Gently clean the filter using dishwashing liquid and allow to dry. Clean out the air holes in both the delivery stud (8) and the regulator body (2).
4. Re-install the filter in the body and replace the lower seat, taking care not to overtighten. The seat should only be tightened until the sealing rings (4) are compressed and an airtight seal is achieved.

Caution: Over tightening will permanently damage the sealing rings.

5. Finally, re-install the unit into the airline.

No	Description
1	Regulator Knob
2	Regulator
3	Outlet Valve
4	Sealing Ring
5	Filter Body
6	Plastic Clip
7	Filter
8	Delivery Stud
9	Lower Seat
10	Pressure Gauge
11	Mounting Bracket
12	Fixing Ring
13	Reducer (FR2 only)
14	Lock Nut (FR1 only)



A SELECTION FROM THE VAST RANGE OF

Clarke®

QUALITY PRODUCTS

AIR COMPRESSORS

From DIY to industrial, Plus air tools, spray guns and accessories.

GENERATORS

Prime duty or emergency standby for business, home and leisure.

POWER WASHERS

Hot and cold, electric and engine driven - we have what you need

WELDERS

Mig, Arc, Tig and Spot. From DIY to auto/industrial.

METALWORKING

Drills, grinders and saws for DIY and professional use.

WOODWORKING

Saws, sanders, lathes, mortisers and dust extraction.

HYDRAULICS

Cranes, body repair kits, transmission jacks for all types of workshop use.

WATER PUMPS

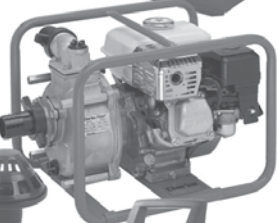
Submersible, electric and engine driven for DIY, agriculture and industry.

POWERTOOLS

Angle grinders, cordless drill sets, saws and sanders..

STARTERS/CHARGERS

All sizes for car and commercial use.



PARTS & SERVICE: 0208 988 7400

E-mail: Parts@clarkeinternational.com or Service@clarkeinternational.com

SALES: UK 01992 565333 or Export 00 44 (0)1992 565335

Clarke INTERNATIONAL Hemnall Street, Epping, Essex CM16 4LG
www.clarkeinternational.com