

ClarkeTM

air



DESCALING KIT

MODEL NO: CAT84

PART No: 3110820

OPERATION & MAINTENANCE INSTRUCTIONS



0502

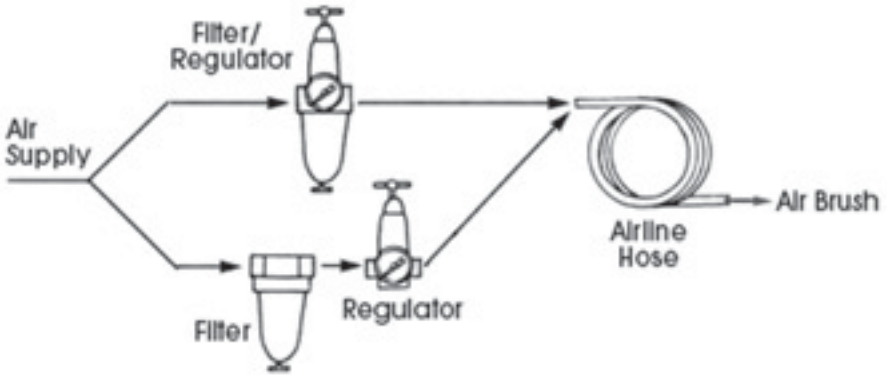


Fig.1

SPECIFICATIONS

Model : CAT 84
 Part No : 3110820
 Maximum Air Consumption : 4 CFM
 Recommended Air Pressure : 90 PSI (6.2bar)
 Air Inlet Size : 1/4" BSP
 Minimum Hose Size : 5/16" (8mm) ID
 Weight : 2.2 kg
 Blows Per Minute : 4,500 (@6.2bar)
 Piston Stroke : 41 mm (1 - 5/8")

Please note that the details and specifications contained herein are correct at the time of going to print. However CLARKE International reserve the right to change specifications at any time without prior notice. Always consult the machines data plate



Please read these instructions carefully before operating the tool

Thank you for purchasing this **CLARKE** Air Descaling Kit
Before using the device, please read this manual thoroughly and carefully follow all instructions given. This is for your own safety and that of others around you, and is also to help you achieve long and trouble free service from your new tool.

CLARKE GUARANTEE

This CLARKE product is guaranteed against faulty manufacture for a period of 12 months from the date of purchase. Please keep your receipt as proof of purchase.

This guarantee is invalid if the product is found to have been abused or tampered with in any way, or not used for the purpose for which it was intended.

Faulty goods should be returned to their place of purchase, no product can be returned to us without prior permission.

This guarantee does not affect your statutory rights.

ACCESSORIES

A wide range of Airline accessories is available, including Filter/Regulators, Lubricators, High Pressure Hoses from 5 to 100 Metres, etc. Contact your CLARKE dealer for further information, or CLARKE International Sales Department on 01992 565300

SAFETY PRECAUTIONS

IMPORTANT

Failure to follow these precautions could result in personal injury, and/or damage to property.

- ❑ When operating this tool, ALWAYS wear:
 - a. approved impact resistant SAFETY GOGGLES. (Eye glasses are NOT safety glasses)
 - b. a DUST MASK
 - c. EAR DEFENDERS
 - d. a good pair of INDUSTRIAL GLOVES
- ❑ **ALWAYS** disconnect the tool when not in use, and before carrying out any maintenance
- ❑ **ALWAYS** keep a safe distance between yourself and other people when using the tool.
- ❑ **ALWAYS** maintain the tool with care. Keep it clean for best and safest performance.
- ❑ **NEVER** wear ill fitting clothing, remove watches and rings.
- ❑ Quick change couplings should not be located at the tool. They add weight and could fail due to vibration.
- ❑ **DO NOT** over-reach. Keep your proper footing and balance at all times.
- ❑ **DO NOT** force or misuse the tool. It will do a better and safer job at the rate for which it was designed.
- ❑ **DO NOT** abuse hoses or connectors. NEVER carry a tool by the hose, or yank it to disconnect from the air supply. Keep hoses away from heat, oil and sharp edges. Check hoses for leaks or worn condition before use, and ensure that all connections are secure.
- ❑ **DO NOT** exceed 90 PSI at the tool.
- ❑ **DO NOT** modify the tool in any way.
- ❑ **DO NOT** remove any labels. Damaged labels should be replaced.
- ❑ This tool vibrates with use. Vibration may be harmful to your hands or arms. Stop using the tool if discomfort, a tingling feeling or pain occurs. Seek medical advice before resuming use.
- ❑ **ALWAYS** use screens to protect people in the vicinity from flying debris.
- ❑ **NEVER** point the tool at anyone.

AIR SUPPLY

Tools of this type, operate on a wide range of air pressures. It is recommended that air pressure to this tool does not exceed 90 PSI (6.1bar), at the tool when running. Higher pressure and unclean air, will shorten the tools' life because of faster wear, and could be a safety hazard.

Water in the air line will cause damage to the tool, ensure it is properly maintained at all times.

The recommended procedure to connect this tool to an air supply, is shown at fig. 1 on inside front cover.

The air inlet used for connecting air supply, has a standard ¼" BSP thread.

Line pressure, or hose inside diameter, should be increased to compensate for unusually long air hoses (over 10m). Minimum hose diameter should be 6mm (¼" ID.), and fittings should have the same inside dimensions.

ASSEMBLY

Connect a suitable hose to the Descaler using a ¼" hose adapter, (A whip hose with Quick Fit coupling is available from your CLARKE dealer), then connect the other end to the airline.

NOTE: ensure the airline is turned off.

Your Descaler is now ready for use.



Compressed air can be dangerous. Ensure that you are thoroughly familiar with all precautions relating to the use of compressors and compressed air supply.



OPERATING INSTRUCTIONS

Before starting work drain any water from the air tank and blow condensation from the air line. Drain compressor more frequently in hot humid weather.

Kit Contents

1. The Main Body inc Hammer assy.
2. The Needle Holder, complete.
3. Three Chisels with Spring Retainer.
Depending on the work to be carried out, choose either Needles or Chisel.

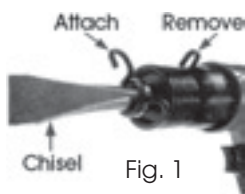
WARNING

Always ensure air is turned off before installing or removing tools etc.

To install the Needle Tube, complete with Needles. Push the assy on to the nose of the tool, and screw in fully, (HAND TIGHT ONLY).

To install a Chisel, unscrew the Needle Tube assy, if fitted, and insert Chisel into the hole in the end of the nose of the tool.

Place the Spring retainer over the Chisel and screw on to the nose fully, using the appropriate lug, (See Fig. 1).



Once the appropriate tool is fitted, you are ready to start.

Turn ON the air supply, and check for air leaks, if any are apparent, rectify before proceeding. Ensure the air pressure is set to 90 PSI (6.2bar).

Hold the tool with one hand around the handle and the other around the barrel, bring the tool towards the work at an angle of approx, 60 - 70°. Depress the trigger and allow the Needles/Chisel to come into contact with the work.

Needle/Chisel force can be adjusted by turning the regulator knob, located at the base of the handle grip.

To increase force, turn reg clockwise and anticlockwise to reduce.

moving slowly across work surface, proceed to remove scale, rust or other contaminants. Release the trigger to stop operation, noting that the tool may impact briefly after the trigger is released.

MAINTENANCE

Daily before use.

1. Drain water from air tank, air line and compressor.
2. Check and clean, if necessary, the air inlet gauze filter .
3. Pour a few drops of CLARKE Air Line Oil (approx 3cc), into the air inlet. This should be carried out regardless of whether or not an air line lubricator is used. If an Air line lubricator is NOT used, this procedure should be repeated after every two to three hours of use.

If the Descaler is to be stored, or is idle for longer than 24 hours, run a few drops of Clarke Air Line Oil into the air inlet, and run the tool for 5 seconds in order to lubricate the internal parts.

For lubricating the air motor when in operation, an air line lubricator should be used, with Clarke Air Line Oil, adjusted to 2 drops per minute.

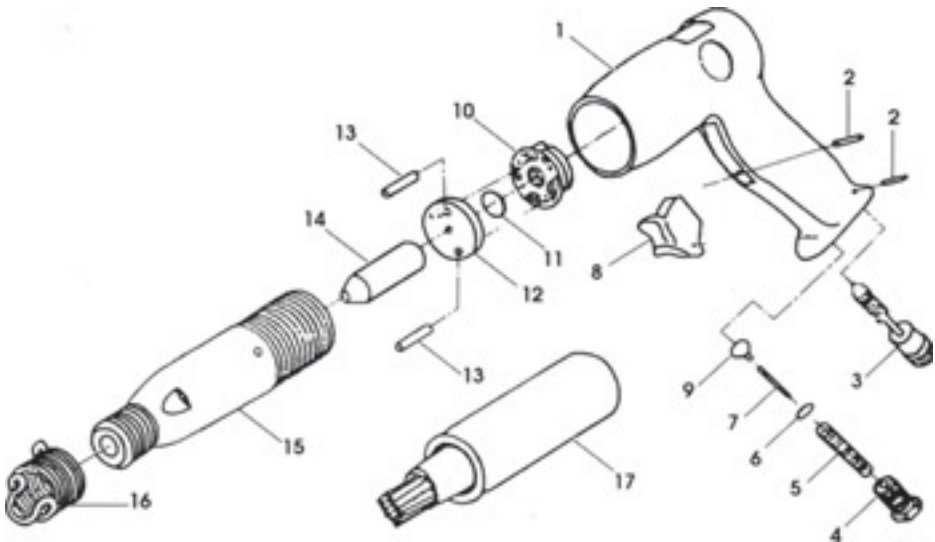
Clarke Air Line Oil is available from your CLARKE dealer, part no. 3050825.

Be aware that factors other than the tool may effect its operation and efficiency, such as reduced compressor output, excessive drain on the airline, moisture or restrictions in the line, or the use of connectors of improper size or poor condition which will reduce air supply.

Grit or gum deposits in the tool may also reduce efficiency. This condition can be corrected by cleaning the air strainer and flushing out the tool with gum solvent oil, or failing this, the tool should be dis-assembled, thoroughly cleaned, dried and re-assembled.

If the tool runs erratically or becomes inefficient, and the air supply is sound, dismantle the air motor and replace worn or damaged parts, or take the tool to your CLARKE dealer.

PARTS DIAGRAM



PARTS LIST

Index No.	Part No.	Description	Qty	Index No.	Part No.	Description	Qty
1	KLAH01	Handle	1	10	KLAH10	Upper Valve Case	1
2	KLAH02	Pin	1	11	KLAH11	Valve Disk	1
3	KLAH03	Regulator	1	12	KLAH12	Lower Valve Case	1
4	KLAH04	Hose Adapter	1	13	KLAH13	Valve Pin	2
5	KLAH05	Throttle Spring	1	14	KLAH14	Piston	1
6	KLAH06	`O' Ring	1	15	KLAH15	Cylinder	1
7	KLAH07	Push Rod	1	16	KLAH16	Spring Retainer	1
8	KLAH08	Trigger	1	17	KLAH17	Needle Scaler Attach't	1
9	KLAH09	Steel Ball	1	18	KLAH18	Chisel Set	1

PARTS & SERVICE TEL: 020 8988 7400

or e-mail as follows:

PARTS: Parts@clarkeinternational.com

SERVICE: Service@clarkeinternational.com

IMPORTANT:

The use of parts other than CLARKE replacement parts may result in safety hazards, decreased tool performance and may invalidate your warranty.

Clarke[®]

INTERNATIONAL

This is an important document and should be retained

DECLARATION OF CONFORMITY



We declare that this product complies with the following standards/directives:

- 89/392/EEC
- 91/368/EEC
- 92/68/EEC
- 93/44/EEC

Description: **AIR TOOL RANGE**

Model No: **CAT84**

Serial (Batch) No: **See Product Date Plate**

Signed: _____

A handwritten signature in black ink, appearing to be 'L. S. Fry', written over a horizontal line.

Clarke[®] INTERNATIONAL

Hennell Street, Epping, Essex CM18 4LG