

CLARKE®



CUT OFF TOOL

MODEL: CAT113

Part No: 3120135

ASSEMBLY & INSTRUCTION MANUAL

CE

LS0309

INTRODUCTION

Thank you for purchasing this CLARKE product

Before attempting to use the product, it is essential that you read this manual thoroughly and carefully follow all instructions given. In doing so you will ensure the safety of yourself and that of others around you, and you can also look forward to the product giving you long and satisfactory service.

GUARANTEE

This CLARKE product is guaranteed against faulty manufacture for a period of 12 months from the date of purchase. Please keep your receipt as proof of purchase.

This guarantee is invalid if the product is found to have been abused or tampered with in any way, or not used for the purpose for which it was intended.

Faulty goods should be returned to their place of purchase, no product can be returned to us without prior permission.

This guarantee does not effect your statutory rights.

ENVIRONMENTAL PROTECTION



Do not dispose of this product with general household waste. All tools, accessories and packaging should be sorted, taken to a recycling centre and disposed of appropriately.

PARTS & SERVICE

For parts & Servicing, please contact your nearest dealer, or CLARKE International, on one of the following numbers.

PARTS & SERVICE TEL: 020 8988 7400

PARTS & SERVICE FAX: 020 8558 3622

or e-mail as follows:

PARTS: Parts@clarkeinternational.com

SERVICE: Service@clarkeinternational.com

SAFETY PRECAUTIONS

WORK ENVIRONMENT

- Keep the work area clean and tidy.
- Dress appropriately - Do not wear loose clothing or jewellery.
- Tie long hair out of the way.
- Do not operate the cut off tool where there are flammable liquids or gases.
- Keep the air supply hose away from heat, oil and sharp edges.
- Do not fit the cut off tool to any stand or clamping device.

USE

- Stay alert and use common sense - Do not operate the cut off tool when you are tired or under the influence of alcohol, drugs or medication.
- Always wear eye protectors when using the cut off tool - Eye protectors must provide protection from flying particles from the front and the side.
- Always wear ear protectors when using the cut off tool.
- Do not overreach - Keep proper footing and balance at all times.
- Never use any type of bottled gas as a source of power for the cut off tool.
- Do not connect the air supply hose with your finger on the trigger.
- Do not exceed the maximum recommended pressure for the cut off tool: 90 psi / 6.2 bar.
- Check hoses for leaks or worn condition before use, and ensure that all connections are secure.
- Do not use the cut off tool for any other purpose than described in this book.
- Do not carry out any alterations or modifications to the cut off tool.
- Never use the cut off tool if it is defective or operating abnormally.
- The cut off tool should be serviced at regular intervals by qualified service personnel.
- Avoid damaging the cut off tool for example by applying excessive force of any kind.
- Always keep the cut off tool in good condition.

SAFETY PRECAUTIONS

- Always disconnect from the air supply when:
 - a) Performing any maintenance
 - b) The cut off tool is not in use.
 - c) The cut off tool will be left unattended.
 - d) Moving to another work area.
 - e) Passing the cut off tool to another person.
- Quick change couplings should not be located at the tool. They add weight and could fail due to vibration.
- DO NOT force or misuse the tool. It will do a better and safer job at the rate for which it was designed.
- DO NOT remove any labels. Damaged labels should be replaced.
- This tool vibrates with use. Vibration may be harmful to your hands or arms. Stop using the tool if discomfort, a tingling feeling or pain occurs. Seek medical advice before resuming use.

TRANSPORTATION

- Never carry the cut off tool by the air supply hose.
- Never carry the cut off tool with your finger on the trigger.

STORAGE

- When not in use the cut off tool must be disconnected from the air supply and stored in a dry place out of the reach of children (preferably in a locked cabinet).
- Avoid storing the cut off tool in environments where the temperature is below 0°C.

AIR SUPPLY

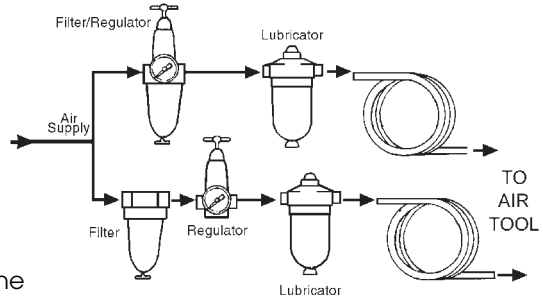


WARNING: COMPRESSED AIR CAN BE DANGEROUS. ENSURE THAT YOU ARE THOROUGHLY FAMILIAR WITH ALL PRECAUTIONS RELATING TO THE USE OF COMPRESSORS AND COMPRESSED AIR SUPPLY.

The recommended procedure to connect this tool to an air supply, is shown on the right.

We recommend that an automatic in-line filter-regulator-lubricator is used.

- It will keep the tool in good condition. The in-line lubricator should be regularly checked and filled with air tool oil adjusted to 2 drops per minute.



AIR SUPPLY SAFETY

1. Ensure the trigger is in the OFF position before connecting to the air supply.
2. You will require an air pressure of 90 psi, with an air flow of at least 4 CFM.



WARNING! ENSURE THE AIR SUPPLY IS CLEAN AND DOES NOT EXCEED 90PSI WHILE OPERATING THE TOOL. TOO HIGH AN AIR PRESSURE AND UNCLEAN AIR WILL SHORTEN THE PRODUCT LIFE DUE TO EXCESSIVE WEAR, AND MAY BE DANGEROUS CAUSING DAMAGE AND/OR PERSONAL INJURY.

3. Drain the compressor daily. Water in the air line could damage the cut off tool.
4. Clean air inlet filter weekly.
5. Line pressure should be increased to compensate for unusually long air hoses (over 8 metres). The hose diameter should be 3/8" Internal Diameter. The pressure at the cut off tool should not be over 90 psi.

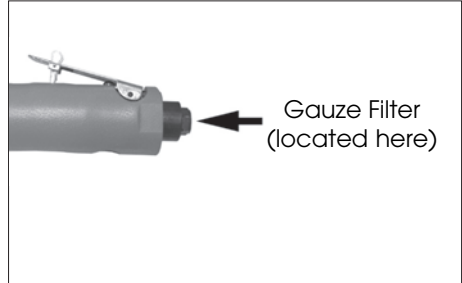
AIR HOSE

- The air hose must be rated at least 150% of the maximum operating pressure of the tool.

BEFORE USE

If an automatic in-line filter-regulator-lubricator is not used, the following procedure should be carried out before use and after every two to three hours of use.

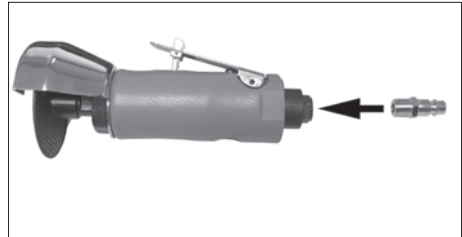
1. Drain water from air tank, air line and compressor.
2. Remove the plug from the rear of the cut off tool.
3. Check and clean the air inlet gauze filter.
4. Pour 2-3 drops of Clarke air line oil (approx. 3 cc), into the air inlet. This should be carried out regardless of whether or not an air line lubricator is used.
5. Connect tool to air supply, turn ON the air supply, and check for air leaks. If any are apparent, rectify before proceeding.



ASSEMBLY

NOTE: Ensure the airline is turned off.

1. Screw in the adaptor supplied.
2. Connect a suitable air hose to the cut-off tool using a ¼" hose adapter, (A whip hose with quick fit coupling is available from your CLARKE dealer). Then connect the other end to the airline.



Your cut-off tool is now ready for use.

IMPORTANT

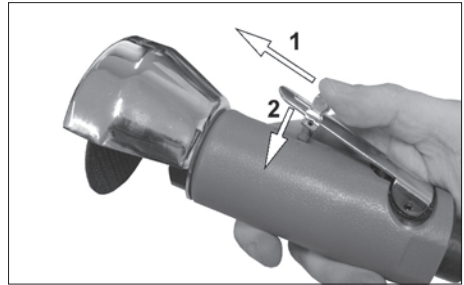
- NEVER use cracked or chipped cutting discs.
- NEVER use non-reinforced cutting discs.
- NEVER use the cut off tool without disc guard in place.
- NEVER use the side of the cutting disc for grinding.
- ONLY use for cutting operations.
- ALWAYS ensure the cutting disc has stopped before putting it down.

OPERATING INSTRUCTIONS



WARNING: ENSURE YOU READ, UNDERSTAND AND APPLY SAFETY INSTRUCTIONS BEFORE USE.

1. Push safety lever (mounted on the throttle lever) forward and depress throttle lever.
 - Allow tool to run up to full speed for a couple of seconds before offering disc to work piece.
2. Apply a steady, even pressure. Do not force. Too much pressure can cause disc to break and may even cause injury.



NOTE: DO NOT allow tool to free run for an extended period of time as this will shorten its life.

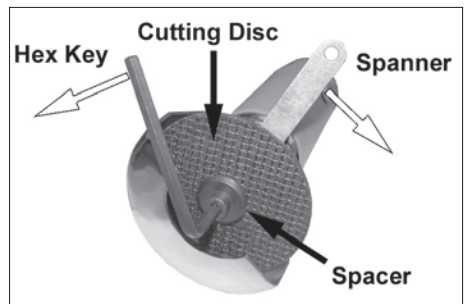
CHANGING THE CUTTING DISC



WARNING: ENSURE AIR IS TURNED OFF AND TOOL IS DISCONNECTED FROM THE AIR SUPPLY BEFORE REPLACING DISC.

1. Ensure the disc being fitted has a speed rating greater than 18,000 RPM.
2. Install disc using spanner and hex key supplied. Ensure that the spacer is in place.

IMPORTANT: The use of parts other than CLARKE replacement parts may result in safety hazards, decreased tool performance and may invalidate your warranty.



Replacement cutting discs are available from your Clarke dealer.

Part number 3110731

MAINTENANCE



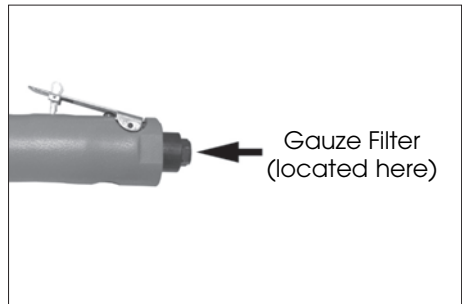
WARNING: DISCONNECT TOOL FROM AIR SUPPLY BEFORE CHANGING ACCESSORIES, SERVICING OR PERFORMING MAINTENANCE. REPLACE OR REPAIR DAMAGED PARTS. USE GENUINE CLARKE PARTS ONLY. NON-AUTHORISED PARTS MAY BE DANGEROUS

1. Lubricate the air tool daily by placing a few drops of air tool oil into the air inlet.

TROUBLESHOOTING.

Loss of power or erratic action may be due to the following:

- a. Excessive usage on the air line.
- b. Moisture or restriction in the air pipe.
- c. Incorrect size or type of hose connectors.
- d. Grit or gum deposits in the tool may also reduce performance.
- e. Check and clean the gauze filter (located in the air inlet).



If the tool runs erratically or becomes inefficient, and the air supply is sound, take the tool to your CLARKE dealer.

STORAGE

If the tool is to be stored, or is idle for longer than 24 hours, run a few drops of Clarke air line oil into the air inlet, and run the tool for 5 seconds in order to lubricate the internal parts.

1. When not in use, disconnect from air supply, clean tool and store in a safe, dry place.

TECHNICAL SPECIFICATION

Please note that the details and specifications contained herein, are correct at the time of going to print. However, CLARKE International reserve the right to change specifications at any time without prior notice.

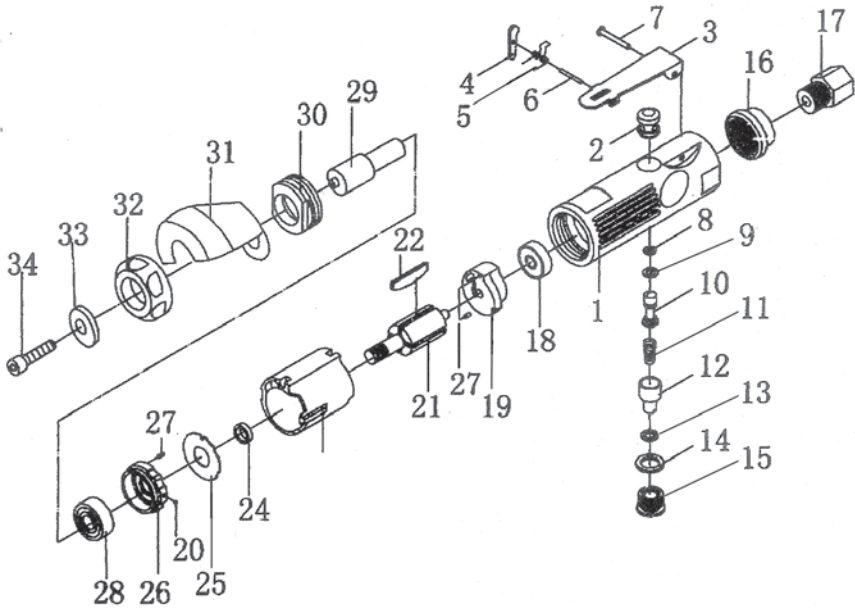
| | |
|---------------------------------|---------------------|
| Cutting disc diameter | 3" (76mm) |
| No load speed | 18000rpm |
| Air consumption | 4 cfm |
| Operating pressure | 90 psi (6.2 bar) |
| Weight | 0.8 kg |
| Air inlet size | 1/4" BSP |
| A weighted sound pressure level | 96.9 dB(A) |
| Sound power level | 107.9 dB(A) |
| Vibration in the handle | 2.0m/s ² |
| Dimensions (L x W x H) | 183 x 83 x 80 mm |

ACCESSORIES

A wide range of accessories are available, including Filter/Regulators, Lubricators, High Pressure Hoses (5 to 100 Metres), etc.

Contact your CLARKE dealer for further information, or CLARKE International Sales Department on 01992 565 333.

PARTS DIAGRAM + LIST



| No | Description | Part No | No | Description | Part No |
|----|-----------------|-------------|----|------------------|-------------|
| 1 | Housing | RONCAT11301 | 18 | Bearing | RONCAT11318 |
| 2 | Valve Stem Seat | RONCAT11302 | 19 | Back Plate | RONCAT11319 |
| 3 | Trigger | RONCAT11303 | 20 | Steel Ball | RONCAT11320 |
| 4 | Trigger Pin | RONCAT11304 | 21 | Rotor | RONCAT11321 |
| 5 | Spring | RONCAT11305 | 22 | Rotor Blade | RONCAT11322 |
| 6 | Pin | RONCAT11306 | 23 | Cylinder | RONCAT11323 |
| 7 | Trigger Pin | RONCAT11307 | 24 | Bushing | RONCAT11324 |
| 8 | O Ring | RONCAT11308 | 25 | Washer | RONCAT11325 |
| 9 | O Ring | RONCAT11309 | 26 | Front Plate | RONCAT11326 |
| 10 | Valve Stem | RONCAT11310 | 27 | Bolt | RONCAT11327 |
| 11 | Valve Spring | RONCAT11311 | 28 | Bearing | RONCAT11328 |
| 12 | Air Regulator | RONCAT11312 | 29 | Retainer Seat | RONCAT11329 |
| 13 | O Ring | RONCAT11313 | 30 | Retainer Ring | RONCAT11330 |
| 14 | O Ring | RONCAT11314 | 31 | Shielding Casing | RONCAT11331 |
| 15 | Screw Cap | RONCAT11315 | 32 | Front Grip | RONCAT11332 |
| 16 | Muffle Cover | RONCAT11316 | 33 | Washer | RONCAT11333 |
| 17 | Air Inlet Plug | RONCAT11317 | 34 | Screw | RONCAT11334 |

DECLARATION OF CONFORMITY



Clarke[®]
INTERNATIONAL

Hemnal Street, Epping, Essex CM16 4LG

DECLARATION OF CONFORMITY

This is an important document and should be retained.

We hereby declare that this product(s) complies with the following directive(s):

98/37/ EC Machinery Directive.

The following standards have been applied to the product(s):

EN 792-7:2001

The technical documentation required to demonstrate that the product(s) meet(s) the requirement(s) of the aforementioned directive(s) has been compiled and is available for inspection by the relevant enforcement authorities.

The CE mark was first applied in: 2007

Product Description: 3" Cut Off Tool
Model number(s): CAT 113
Serial / batch Number: N/A
Date of Issue: 17/03/09

Signed:

J.A. Clarke
Managing Director

A SELECTION FROM THE VAST RANGE OF

Clarke®

QUALITY PRODUCTS

AIR COMPRESSORS

From DIY to industrial, Plus air tools, spray guns and accessories.

GENERATORS

Prime duty or emergency standby for business, home and leisure.

POWER WASHERS

Hot and cold, electric and engine driven - we have what you need

WELDERS

Mig, Arc, Tig and Spot. From DIY to auto/industrial.

METALWORKING

Drills, grinders and saws for DIY and professional use.

WOODWORKING

Saws, sanders, lathes, mortisers and dust extraction.

HYDRAULICS

Cranes, body repair kits, transmission jacks for all types of workshop use.

WATER PUMPS

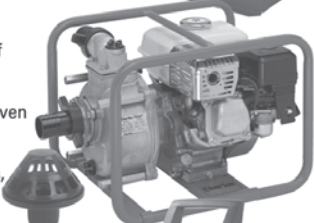
Submersible, electric and engine driven for DIY, agriculture and industry.

POWERTOOLS

Angle grinders, cordless drill sets, saws and sanders..

STARTERS/CHARGERS

All sizes for car and commercial use.



PARTS & SERVICE: 0208 988 7400

E-mail: Parts@clarkeinternational.com or Service@clarkeinternational.com

SALES: UK 01992 565333 or Export 00 44 (0)1992 565335

Clarke INTERNATIONAL Hemnall Street, Epping, Essex CM16 4LG
www.clarkeinternational.com