

Elantra®



10 Ton LOG SPLITTER

MODEL NO: Log Buster 4

PART No: 340205

OPERATION & MAINTENANCE INSTRUCTIONS





Thank you for purchasing this CLARKE 10 ton manually operated Log Splitter.

Before attempting to use the machine, please read this manual thoroughly and follow the instructions carefully. In doing so you will ensure the safety of yourself and that of others around you, and you can look forward to the log buster giving you long and satisfactory service.

Clarke Guarantee

This CLARKE product is guaranteed against faulty manufacture for a period of 12 months from the date of purchase. Please keep your receipt as proof of purchase.

This guarantee is invalid if the product is found to have been abused or tampered with in any way, or not used for the purpose for which it was intended.

Faulty goods should be returned to their place of purchase, no product can be returned to us without prior permission.

This guarantee does not effect your statutory rights.

Specifications

- Model No: Log Buster 4
- Part No: 3402025
- Ram Stroke 205mm (8-1/16")
- Weight: 46.6kg
- Base Dimensions L x W x H: 1070 x 210 x 280 mm (without handles)
- Oil Type Clarke Hydraulic Oil
- LOG CAPACITY
- Maximum Length: 444mm
- Maximum Diameter: 175mm

Please note that the details and specifications contained herein, are correct at the time of going to print. However, CLARKE International reserve the right to change specifications at any time without prior notice.



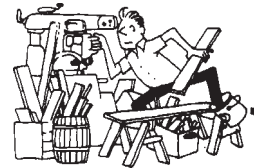
When disposing of this product, do not dispose of with general waste. It must be disposed of according to the laws governing Waste Electrical and Electronic equipment, at a recognised disposal facility.

Safety Precautions



As with all machinery, there are certain hazards involved with their operation and use. Exercising respect and caution will considerably lessen the risk of personal injury. However, if normal safety precautions are overlooked or ignored, personal injury to the operator or damage to property, may result.

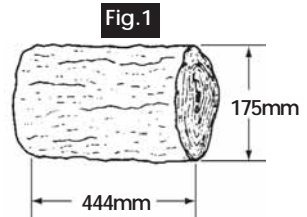
1. **ALWAYS** Learn the machines applications, limitations and the specific potential hazards peculiar to it. Read and become familiar with the entire operating manual.
2. **ALWAYS** use a face or dust mask if operation is particularly dusty.
3. **ALWAYS** check for damage. Before using the machine, any damaged part, should be checked to ensure that it will operate properly, and perform its intended function. Check for alignment of moving parts, breakage of parts, mountings, and any other condition that may affect the machines operation. Any damage should be properly repaired or the part replaced. If in doubt, **DO NOT** use the machine. Consult your local dealer.
4. **ALWAYS** wear safety goggles, manufactured to the latest European Safety Standards. Everyday eyeglasses do not have impact resistant lenses, they are not safety glasses.
5. **ALWAYS** keep work area clean. Cluttered areas and benches invite accidents.
6. **ALWAYS** ensure that adequate lighting is available. A minimum intensity of 300 lux should be provided. Ensure that lighting is placed so that you will not be working in your own shadow.
7. **ALWAYS** keep children away. All visitors should be kept a safe distance from the work area, especially whilst operating the machine.
8. **ALWAYS** maintain machine in top condition. Keep tools/machines clean for the best and safest performance. Follow maintenance instructions.
9. **ALWAYS** concentrate on the job in hand, no matter how trivial it may seem. Be aware that accidents are caused by carelessness due to familiarity.
10. **ALWAYS** keep your proper footing and balance at all times - don't overreach. For best footing, always wear safety footwear (rubber soles & steel toecaps). Keep floor clear of oil, scrap wood, etc.



Additional Precautions for Log Splitters

Extra special care is required when using this powerful tool to safeguard yourself and others around you.

- Before using the log splitter, check for fluid leaks. Be sure the tool and the work area around it is clean and free of oil spills. Hydraulic fluid can create hazards, causing you to slip and fall, your hands to slip while using the machine, and it is also a potential fire hazard.
- **Hydraulic Systems:** **Never** operate this tool if there is a potential hazard due to leaking hydraulic fluid.
- **Physical Hazards:** The very nature of log splitting will produce splinters. When operating log splitters, always ensure approved safety gloves, shoes, and eye protection is worn.
- **NEVER** tamper with the log splitter .
- **NEVER** try to split logs larger than those indicated in Fig. 1. This could be dangerous and may damage the machine.
- **Do not** allow split logs to accumulate, always clean up as you work, accumulated split logs and wood chips can create a hazardous work environment.



- The operator must take all necessary precautions to minimise the risk of accidental damage or injury due to wood being ejected from the machine.
- The surface must be perfectly level to prevent the machine from moving during operation, and the area must be free from any objects that could prevent complete freedom of movement for the operator whilst working.
- The machine must always be used by **ONE OPERATOR ONLY**. Nobody must be allowed to use the log splitter unless they have read the instruction manual thoroughly and have been instructed in its use. The machine must be used by adults only. Check that the logs to be split are free from nails or wire, which may fly up or damage the machine.
- Split wood in the direction of the grain. Do not attempt to split a piece of wood across the grain as this could seriously damage the machine.
- If the log moves away from the blade, retract the ram and rotate the log through 90° and try again
- Keep your hands well away from any splits and cracks which open in the log; these may close suddenly and crush your fingers.
- **NEVER** use the machine whilst under the influence of alcohol, drugs, medicines, or when you are tired. A clear mind is essential for safety.
- Before starting work, check correct functioning of all the safety devices and check for soundness of welded joints, securing nuts & bolts.

Figure 1 shows the maximum log size that can be split. Please note that the diameter of the log is indicative: i.e. A small log can be difficult to split if it has knots or a particularly tough fibre. On the other hand, if the wood has regular fibres, it is not difficult to split logs with diameters greater than that shown. It is important **NOT** to persist if the log does not split fairly easily as the pump may be damaged. This could occur when the machine is made to work under maximum stress in an attempt to split excessively fibrous, knotty wood or wet, green wood.

Assembly

The Logbuster-4 is fully assembled except for the transportation wheels.

Position the wheels and washers (supplied) into position, insert the axle pin from the outside and secure with the split pin provided, in the manner shown in Fig.2

NOTE: The logsplitter may be lifted at the splitting wedge end, using the brace, shown in Fig.3, which will raise the pump end on to its wheels, allowing the unit to be transported to a suitable position.

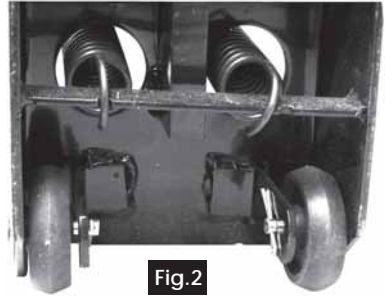
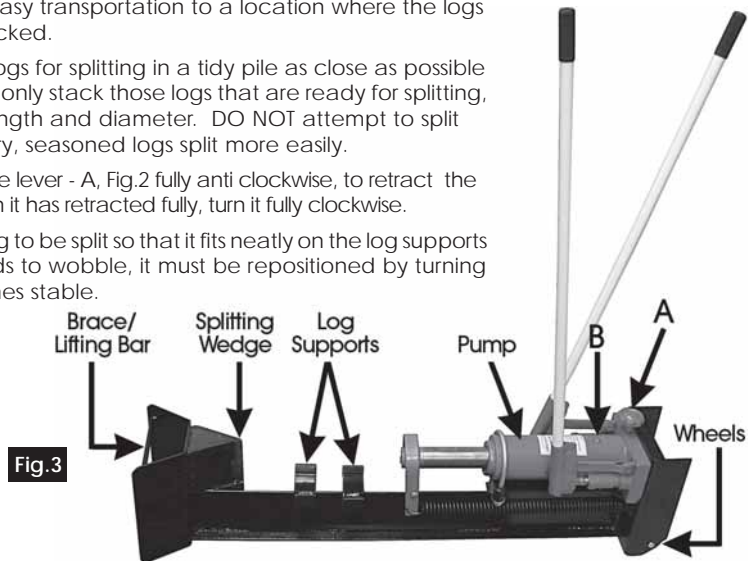


Fig.2

Operation

- If possible have a truck or similar available to stack the split logs into for easy transportation to a location where the logs are to be stacked.
- Prepare the logs for splitting in a tidy pile as close as possible to the splitter, only stack those logs that are ready for splitting, i.e. correct length and diameter. DO NOT attempt to split green logs, dry, seasoned logs split more easily.
- Turn the release lever - A, Fig.2 fully anti clockwise, to retract the ram and when it has retracted fully, turn it fully clockwise.
- Position the log to be split so that it fits neatly on the log supports. If the log tends to wobble, it must be repositioned by turning until it becomes stable.



- With the log in place and ensuring all precautions referred to previously have been observed, pump the handles which will extend the ram and proceed to split the log.
- When the log has split, turn the release lever - A, anticlockwise to retract the ram and free the log.
- If the log has not split, turn it through 180° and try again.
- If the log has jammed on the splitting wedge, lever it off, standing well clear, DO NOT use you hands to remove a jammed log, as this could be extremely hazardous.

Note: It can sometimes be difficult to split small logs, especially if the wood is particularly hard or knotty, larger logs with regular fibres are quick and easy to split. Any logs found difficult to split, are best discarded to prevent damage to the machine caused by oil seal failure etc.

WARNING:

NEVER ask for the assistance of another person when operating this machine, this instruction applies especially with jam clearing. Keep hands clear of jammed log and moving parts when attempting to free jammed logs.

Maintenance

Before Use

Always inspect the machine to ensure it is in good condition. Inspect the bed and welded joints for signs of cracking or distortion. Inspect the hydraulics for signs of leaks, any defects should be rectified before using the machine again.

Monthly

Bleed system and check oil level as follows.

1. Turn the release valve fully clockwise and pump the handles until the ram is fully extended.
2. Remove the oil filler plug - 'B' Fig.3.
3. Quickly turn the release valve anticlockwise to retract the ram and expel any air from the system.
4. Check the oil level which should be approx. 1/4" below the filler neck.
If necessary, top up with CLARKE hydraulic oil, available from your CLARKE dealer.
5. Finally, carefully replace the filler plug using a small implement to ensure the securing lip is prodded into place inside the filler hole.

After long periods of operation, the splitting wedge will become blunt and require sharpening. To do this, simply remove burrs and flat spots using a fine file.

Trouble Shooting

Problem	Probable Cause	Remedy
Log fails to split.	<p>Incorrect positioning of the log.</p> <p>Log exceeds permitted dimensions or wood is too hard or knotty for the capacity of the machine.</p> <p>Wedge not cutting.</p> <p>Oil Leak</p>	<p>Reposition the log.</p> <p>Use logs of the correct specifications.</p> <p>Check the splitting wedge and sharpen if necessary.</p> <p>Locate the leak and rectify, if necessary, contact your nearest CLARKE dealer.</p>
Ram advances jerkily or with strong vibrations.	Air in hydraulic system.	Bleed system as described under Maintenance. Top up if necessary. If problem persists, consult your CLARKE dealer.
Oil leaks.	Worn or damaged oil seals.	Fit new oil seals, consult your nearest CLARKE dealer.

IMPORTANT:

The use of parts other than CLARKE replacement parts may result in safety hazards, decreased tool performance and may invalidate your warranty.

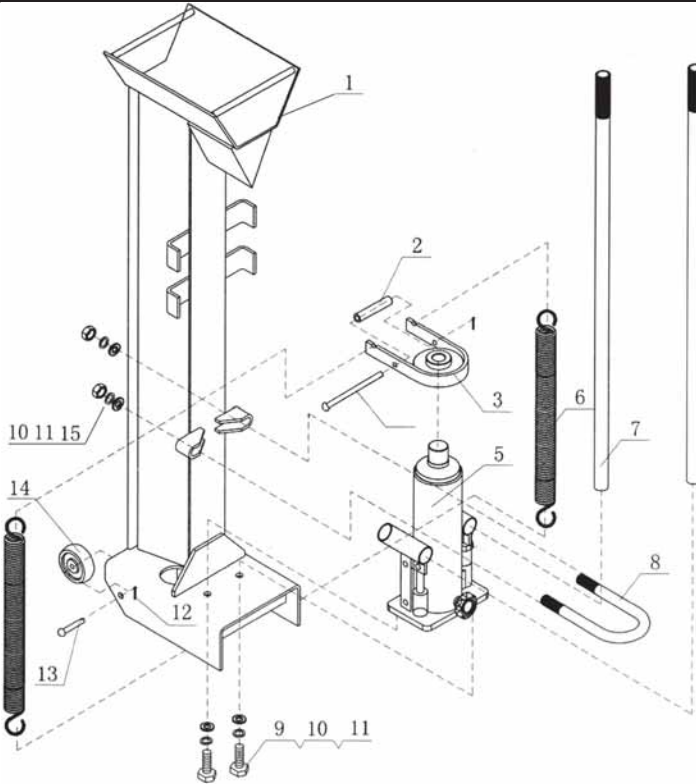
PARTS & SERVICE TEL: 020 8988 7400

or e-mail as follows:

PARTS: Parts@clarkeinternational.com

SERVICE: Service@clarkeinternational.com

Parts Diagram



Parts List

Item	Description	Qty	Part No
1	Frame	1	N023-10000-000
2	Clevis pin wrap	1	N020-20004-000
3	Jacks Top Plate	1	N020-20000-000
4	clevis	1	N020-20003-000
5	Jacks	1	N020-30000-000
6	Spring	1	N020-00002-000
7	Operating Lever	2	N020-40000-000
8	U-Clamp	1	N020-00001-000
9	Bolt	2	9103-10025-000
10	Spring Washer	2	9303-10000-000
11	Washer	4	9703-10000-000
12	Split Pin	2	9404-03025-000
13	Shaft	2	N020-00004-000
14	Wheel	2	N020-00005-000
15	Hex Nut	2	9202-10000-000