

Clarke®



**8" WETSTONE  
BENCH GRINDER**

**OPERATING & MAINTENANCE  
INSTRUCTIONS**



0805

Thank you for purchasing this Clarke Bench Grinder. Before attempting to operate this bench grinder please read this instruction manual thoroughly and follow all directions carefully. This is for your own safety and that of others around you, and to help you achieve long and trouble free service from your bench grinder.

## GUARANTEE

This product is guaranteed against faults in manufacture for 12 months from purchase date. Keep your receipt as proof of purchase.

This guarantee is invalid if the product has been abused or tampered with in any way, or not used for the purpose for which it is intended.

The reason for return must be clearly stated.

This guarantee does not affect your statutory rights.

## FOR YOUR OWN SAFETY

**WARNING! Read these instructions before using the equipment.**

- Always wear suitable Clarke safety goggles, manufactured to the latest European Safety Standards, when Grinding or polishing.
- Do not use the grinder if the guard visor is not in place, or if it is damaged.
- Check that there is nothing flammable in the working area, as sparks from the grinder can easily start a fire.
- Disconnect the grinder from the mains supply before changing the grinding wheel, or topping up the water in the wetstone water bath.
- Never grind on the side face of the wheel. This can cause stresses in the wheel and lead to the wheel bursting.
- Do not use the grinder if the grinding wheel is damaged or out of balance.
- Keep loose clothing, long hair etc. clear of the grinder. Do not hold the workpiece with a rag or similar as these can be caught up in the grinder.

**Note: Bench grinders used in industrial environments may be subject to the requirements of The Provision and Use of Work Equipment regulations 1992 (particularly regarding the training requirement of The Abrasive Wheels Regulations 1970), or other legislation. If in doubt seek advice.**

## TECHNICAL DATA

Model : ..... CBG8W  
Part No: ..... 6500112  
Electric motor: ..... 275 Watts, 240 Volt, Single phase,  
Class 'E',  
Cycle: ..... 10mins ON 10mins OFF  
Dry wheel (mm): ..... 150 x20 x12.7 Bore  
Wetstone wheel (mm): ..... 200x40 x20 Bore

## ELECTRICAL CONNECTIONS

### WARNING! THIS MACHINE MUST BE EARTHED

This product is provided with a standard 13 amp, 230 volt (50Hz). BS 1363 plug, for connection to a standard, domestic electrical supply. Should the plug need changing at any time, ensure that a plug of identical specification is used.

**IMPORTANT: The wires in the mains lead should be wired up in accordance with the following colour code:**

Green & Yellow	-	Earth
Blue	-	Neutral
Brown	-	Live

As the colours of the wires in the mains lead may not correspond with the coloured markings identifying the terminals in your plug, proceed as follows:

- Connect the GREEN & YELLOW cord to terminal marked with a letter "E" or Earth symbol "⏏"
- Connect BROWN cord to plug terminal marked letter "L"
- Connect BLUE cord to plug terminal marked letter "N"

We recommend that this machine is connected to the mains supply through a Residual Current Device (RCD).

### **FUSE RATING**

The fuse in the plug for this appliance must be rated at **13 amps**

### **EXTENSION CABLES**

If an extension cable is used, always ensure it is fully unwound. When used outdoors, ensure the extension cable is specifically designed for outdoor use.

Ensure that the cable is rated for the voltage and amperage of the machine.

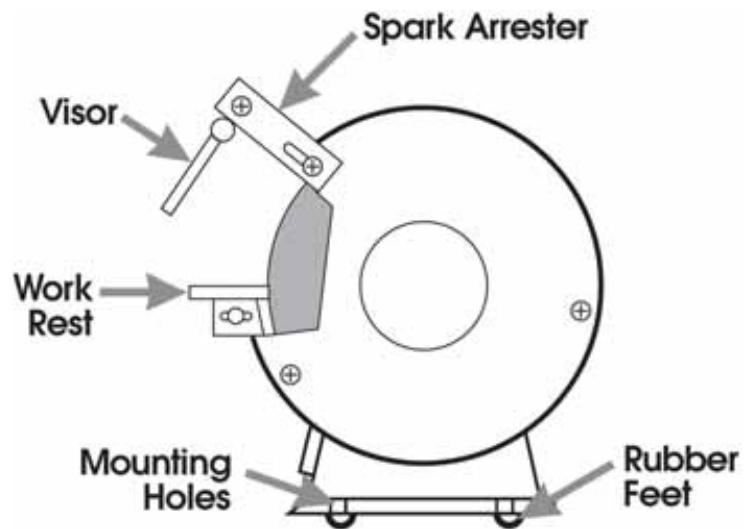
**IF IN DOUBT, CONSULT A QUALIFIED ELECTRICIAN.**

**Do not carry out any electrical repair yourself.**

## ASSEMBLY AND INSTALLATION

1. Fix the grinder to the bench using suitable screws or bolts through the holes in the grinder base. Do not overtighten the securing screws.  

The grinder has rubber mounting feet to help minimise vibration, and these will not be effective if compressed too tightly. If using bolts, make sure they will not work loose under vibration by fitting locknuts or similar.
2. Fit the guard visor as shown in the illustration. Position the visor mounting bracket to within 1.5mm (1/16") of the wheel.
3. Fit the work rest as shown in the illustration, positioning it to within 1.5mm (1/16") of the wheel. This will help to prevent the workpiece being dragged between the wheel and the work rest.
4. Rotate the wheel by hand to make sure the visor mounting bracket and work rest are clear of the wheel.
5. Any fault which might lead to fracture in a new grinding wheel is likely to show in its first minute of operation. Switch the grinder on, stand clear, and allow the grinder to run for a minute or so before using it for the first time.



## MAINTENANCE AND REPLACING WHEELS

**WARNING Disconnect the grinder from the mains supply before fitting replacement wheels, cleaning or adjustment.**

Keep the machine clean by wiping off dust with a clean cloth, and occasionally blowing the grinder through with air. Always wear protective goggles when blowing through with compressed air.

The grinding wheel may need truing or dressing occasionally. Only dress the wheel with a proper dressing tool, whilst wearing safety goggles or glasses. If in doubt seek advice.

Use only correct replacement wheels, of a suitable grade for your intended use. Check that the spindle speed (no-load speed) marked on the machine does not exceed the maximum rpm marked on the grinding wheel. Consult your dealer if in doubt about choosing the correct replacement wheel.

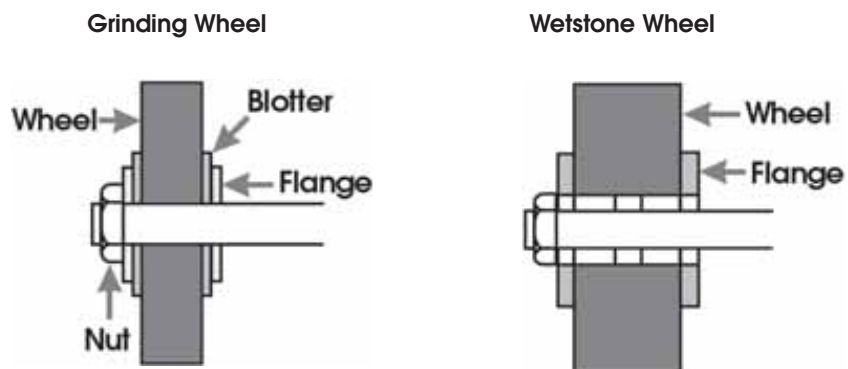
Check replacement wheels thoroughly for any signs of damage before fitting. Replacement wheels must fit easily, but not loosely, on to the machine spindle. Do not attempt to fit a wheel that is tight on the spindle. There is a danger of a tight fitting wheel bursting in use if the spindle expands due to becoming hot.

To replace the grinding wheel: Remove the wheel guard and guard visor (three nuts and bolts). Unscrew the wheel retaining nut (normal right hand thread), and remove the flange, blotter, and used wheel. Reassemble as shown in the diagram.

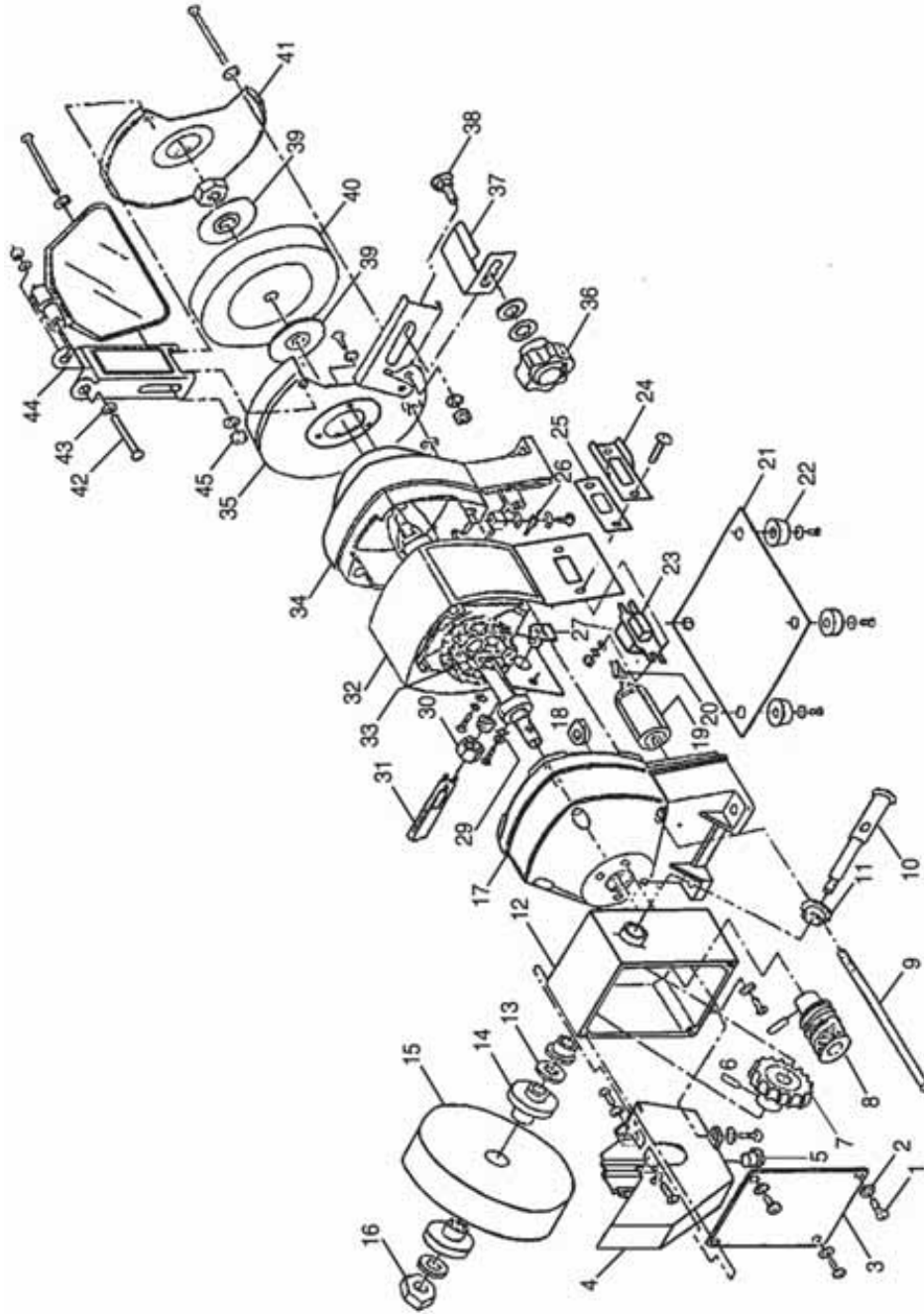
To replace the wetstone wheel: Drain the water bath by removing the plug in the bottom. Remove the water bath (three screws). Unscrew the wheel retaining nut (normal right hand thread), flange, and used wheel. Reassemble as shown in the diagram.

Do not overtighten the wheel retaining nut when reassembling - hand pressure with a standard spanner is sufficient. There is a danger of damaging the wheel if the nut is overtightened.

Switch the grinder on, stand clear, and allow the grinder to run for a minute or so before using a new wheel for the first time.



# PARTS DIAGRAM



## PARTS LIST

Item	Description	Part No.
1.	Screw	HT8481901
2.	Washer	HT8481902
3.	Cover	HT8481903
4.	Water Trough	HT8481904
5.	Rubber Cork	HT8481905
6.	Pin	HT8481906
7.	Worm Wheel	HT8481907
8.	Worm	HT8481908
9.	Both	HT8481909
10.	Short Axis	HT8481910
11.	Journal Bearing	HT8481911
12.	Worm Gear Case	HT8481912
13.	Big Washer	HT8481913
14.	Wheel Flange	HT8481914
15.	Wet Wheel	HT8481915
16.	Nut	HT8481916
17.	Left Main Body	HT8481917
18.	Cable Protector	HT8481918
19.	Capacitor	HT8481919
20.	Connecting	HT8481920
21.	Base	HT8481921
22.	Rubber Foot	HT8481922
23.	Switch	HT8481923
24.	Switch Cover	HT8481924
25.	Seal Plate	HT8481925
26.	Earth Connection	HT8481926
27.	Cable Adaptor	HT8481927
28.	Rotor	HT8481928
29.	Cable Washer	HT8481929
30.	Cable Nut	HT8481930
31.	Cable	HT8481931
32.	Middle Main Body	HT8481932
33.	Stator	HT8481933
34.	Right Main Body	HT8481934
35.	Inner Cover	HT8481935
36.	Knob Nut	HT8481936
37.	Tool Rest	HT8481937
38.	Square Neck Screw	HT8481938
39.	Wheel Flange	HT8481939
40.	Dry Wheel	HT8481940
41.	Outer Cover	HT8481941
42.	Bolt	HT8481942
43.	Eyeshield	HT8481943
44.	Eyeshield Bracket	HT8481944
45.	Spring Washer	HT8481945