

Clarke[®] **METALWORKER**



13mm DRILL PRESS

Model No. CDP101B

Part No. 6505510

OPERATING & MAINTENANCE INSTRUCTIONS



SERIAL No.....

0307

Clarke[®]
INTERNATIONAL



DECLARATION OF CONFORMITY

We declare that this product complies to the following standards/directives:

■ **98/37/EC**

Product Description: **DRILL PRESS**

Model Number: **CDP RANGE**

Serial Number: See Front Cover

Signed 
Engineering Manager

Clarke[®] INTERNATIONAL
Hemnal Street, Epping, Essex CM16 4LG

Clarke International is a trading style of Clarke International Limited

 When disposing of this product, do not dispose of with general waste. It must be disposed of according to law at a recognised disposal facility.

INTRODUCTION

Thank you for purchasing your CLARKE - CDP 101B, 13mm bench mounted Drill Press.

Before attempting to operate the machine, please read this instruction manual thoroughly, and follow all directions carefully. By doing so you will ensure the safety of both yourself and others around you, and at the same time, you should look forward to long and trouble free service from your Clarke Drill Press.

GUARANTEE

This product is guaranteed against faults in manufacture for 12 months from date of purchase. Keep your receipt as proof of purchase. This guarantee is invalid if the product has been found to have been abused or tampered with in any way, or not used for the purpose for which it was intended. The reason for return must be clearly stated. This guarantee does not affect your statutory rights.

TABLE OF CONTENTS

PAGE

Safety Precautions	4
Additional Safety Rules for Drill Presses	5
Electrical Connections and Wiring Diagram	6
Preparation for Use	7
Description of Parts	8
Assembly	9
Settings and Adjustments	11
Drill Speed Table	12
Operation	13
Maintenance	14
Cutting Speed Chart	14
Trouble Shooting	15
Parts Lists and Diagrams	16 - 18
Specifications	19
Optional Accessories	19
Spare Parts & Servicing	19

GENERAL SAFETY PRECAUTIONS

WARNING

As with all machinery, there are certain hazards involved with their operation and use. Exercising respect and caution will considerably lessen the risk of personal injury. However, if normal safety precautions are overlooked, or ignored, personal injury to the operator, or damage to property may result.

1. **KNOW YOUR MACHINE.** Read the manual carefully. Learn the machines applications and limitations, as well as the specific potential hazards peculiar to it.
2. **KEEP GUARDS IN PLACE** and in working order.
3. **EARTH ALL MACHINES.** If the machine is equipped with three-pin plug, it should be plugged into a three-pin electrical socket. Never remove the earth pin.
4. **REMOVE ALL ADJUSTING KEYS AND WRENCHES.** Before starting, form the habit of checking to ensure that keys, wrenches and tools are removed from the machine.
5. **KEEP WORK AREA CLEAN.** Cluttered areas and benches invite accidents.
6. **DON'T USE IN DANGEROUS ENVIRONMENT.** Don't use machinery in damp or wet locations, or expose them to rain. Keep work area well lit.
7. **MAKE WORKSHOP CHILDPROOF** - with padlocks, master switches etc.
8. **KEEP CHILDREN AND VISITORS AWAY.** All children and visitors should be kept a safe distance from work area
9. **DON'T FORCE THE MACHINE.** It will do the job better and safer, at the rate for which it was designed.
10. **USE THE RIGHT TOOL.** Don't force a tool or attachment to do a job for which it was not designed.
11. **WEAR PROPER APPAREL.** Loose clothing, gloves, neckties, rings, bracelets, or other jewellery may get caught in moving parts. Nonslip footwear is recommended. Long hair should be contained.
12. **USE SAFETY GLASSES.** Everyday eyeglasses only have impact resistant lenses, they are NOT safety glasses.
13. **USE EAR DEFENDERS.**
14. **DON'T OVERREACH.** Keep proper footing and balance at all times.
15. **MAINTAIN TOOLS IN TOP CONDITION.** Keep tools sharp and clean for best and safest performance. Follow instructions for lubricating and changing accessories.
16. **ALWAYS DISCONNECT THE MACHINE** before servicing or changing accessories.
17. **CHECK FOR DAMAGE.** If part of the machine (eg. A cover or guard), is damaged, it should be carefully inspected to ensure that it can perform its' intended function correctly. If in doubt, the part should be renewed. Damage to moving parts or major components should be Inspected by a qualified technician before operating the machine. Contact your local dealer for advice.

19. DO NOT STAND ON THE MACHINE. Serious injury could occur if the machine is tipped over. Do not store materials above or near the machine such that it is necessary to stand on the machine to get to them.
20. NEVER operate a machine when under the influence of alcohol, drugs or medication.
21. ALWAYS ENSURE THAT ADEQUATE LIGHTING is available. A minimum intensity of 300 lux should be provided. Ensure that lighting is placed so that you will not be working in your own shadow.

ADDITIONAL SAFETY RULES FOR DRILL PRESSES

WARNING:

THIS MACHINE MUST NOT BE MODIFIED, OR USED FOR ANY PURPOSE OTHER THAN THAT FOR WHICH IT IS DESIGNED.

1. IMPORTANT: You should not operate this machine unless you are thoroughly familiar with drilling machines and drilling techniques. If there is any doubt whatsoever, you should consult a qualified person.
2. Do not operate the machine until it is completely assembled, and you have read, and understood, this entire manual
3. Ensure the proper electrical regulations are followed, and that the machine is properly earthed.
4. Before switching the machine ON, ALWAYS:-
 - a. Ensure all chuck keys, spanners and wrenches are removed from the machine.
 - b. Examine the setup carefully, ensuring that the workpiece is perfectly secure.
 - c. Ensure your clothing is properly adjusted.
5. Make all adjustments with the power OFF.
6. Always use the correct drilling speeds for the drill size, and the type of material being drilled (see page 14).
7. NEVER leave the drill unattended whilst it is running. Turn the machine OFF and do not leave until it has come to a complete stop.
8. When you have finished with the machine, always remove and store the drill bits.
9. CAUTION: This Drill Press is designed for use with Drill Bits ONLY. The use of other cutting tools or accessories could be hazardous.
10. ALWAYS use clamps, or a drill vice bolted to the table, to hold the work. It should NEVER be held in bare hands.

ELECTRICAL CONNECTIONS

Connect the mains lead to a standard, 230 Volt (50Hz) electrical supply through an approved 13 amp BS 1363 plug, or a suitably fused isolator switch.

WARNING! THIS APPLIANCE MUST BE EARTHED

IMPORTANT: The wires in the mains lead are coloured in accordance with the following code:

Green & Yellow - Earth
Blue - Neutral
Brown - Live

As the colours of the flexible lead of this appliance may not correspond with the coloured markings identifying terminals in your plug proceed as follows:

Connect GREEN & YELLOW cord to terminal marked with a letter "E" or Earth symbol \perp or coloured GREEN or GREEN & YELLOW.

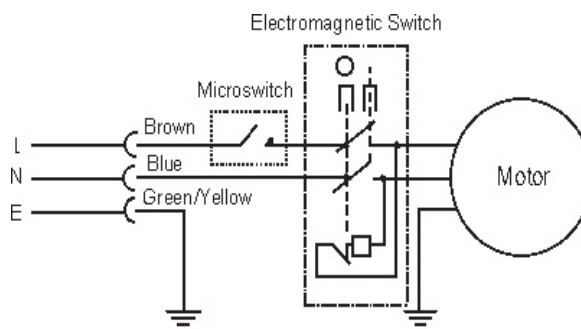
Connect BROWN cord to terminal marked with a letter "L" or coloured RED.

Connect BLUE cord to terminal marked with a letter "N" or coloured BLACK.

If this appliance is fitted with a plug which is moulded onto the electric cable (i.e. non-rewirable) please note:

1. The plug must be thrown away if it is cut from the electric cable. There is a danger of electric shock if it is subsequently inserted into a socket outlet.
2. Never use the plug without the fuse cover fitted.
3. Should you wish to replace a detachable fuse carrier, ensure that the correct replacement is used (as indicated by marking or colour code).
4. Replacement fuse covers can be obtained from your local dealer or most electrical stockists.
5. The fuse in the plug must be replaced with one of the same rating (**13 amps**) and this replacement must be ASTA approved to BS1363.

WIRING DIAGRAM



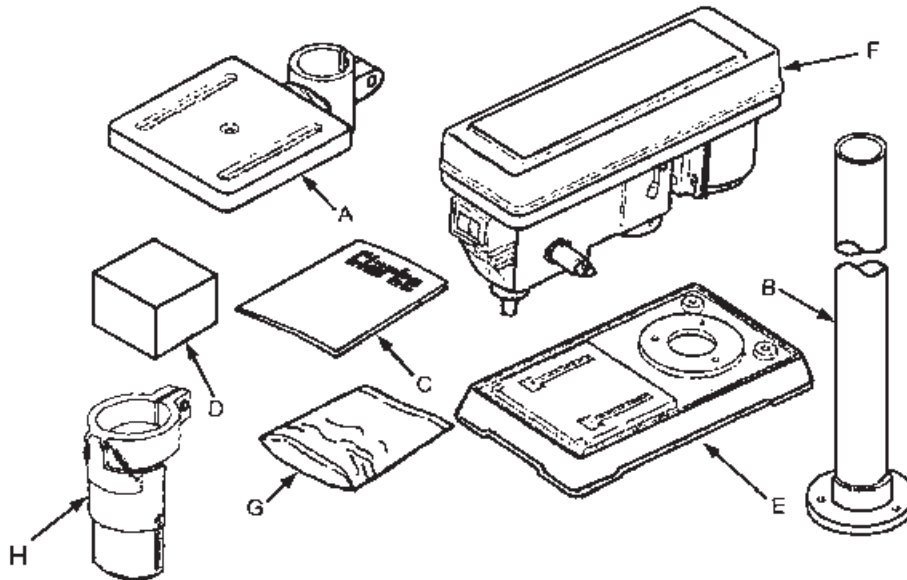
PREPARATION

On receipt, carefully unpack the components, ensuring that no damage was suffered in transit, and that all parts are accounted for.

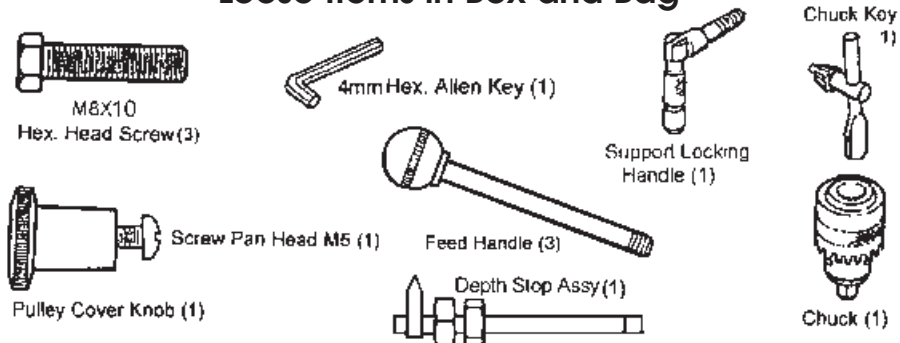
The following loose items are to be found in the packing case.

- | | |
|-----------------------|----------------------------|
| A. Table assy. | E. Base. |
| B. Column assy. | F. Head assy. |
| C. This manual | G. 1 X bag of loose parts. |
| D. Box of loose parts | H. Chuck Guard assy. |

Check the parts against the above list and refer to the following diagrams. Should there be any deficiencies or damage, you should contact your CLARKE dealer immediately .



Loose Items in Box and Bag



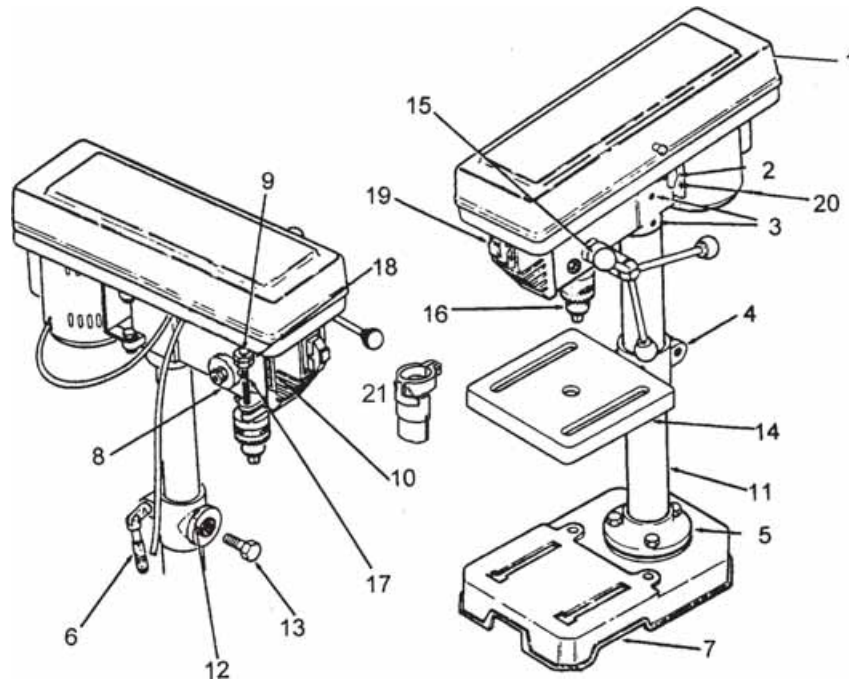
Remove all traces of preservative from the components with paraffin or a good quality solvent, and wipe all parts thoroughly with a clean dry cloth. Apply a coating of wax paste or light oil, to the table, column and base, to prevent rust.

Take the necessary precautions when lifting components, considering their weight. Assistance may be required.

Before use, the machine should be securely bolted, to a strong, heavy workbench, of sufficient height so that you do not need to bend your back to perform normal operations.

Ensure the location is adequately lit, and that you will not be working in your own shadow.

DESCRIPTION OF PARTS



- | | |
|---------------------------------|--------------------------|
| 1. Pulley Cover | 11. Column |
| 2. Belt Tension Locking Screw | 12. Bevel Scale |
| 3. Head Lock Set Screws | 13. Table Lock Set Screw |
| 4. Table Support | 14. Table |
| 5. Column Support | 15. Feed Handles |
| 6. Table Support Locking Handle | 16. Chuck |
| 7. Base | 17. Feed Stop Rod |
| 8. Quill Spring Assembly | 18. Stop Nuts |
| 9. Pointer | 19. Switch |
| 10. Depth Scale | 20. Motor Stop |
| | 21. Chuck Guard |

ASSEMBLY

CAUTION!

IT IS ADVISED THAT ASSISTANCE BE USED WHEN ASSEMBLING THIS MACHINE.

A. Column to the Base.

Bolt the column assembly to the base with the three M8 screws provided.

NOTE: Ideally, the base with column attached, should be firmly bolted to a workbench, prior to the assembly of other components.

B. Table to Column.

1. Thread the Table Support Locking Handle into the Table Support from the left hand side, and leave it loose at this stage.
2. Slide the Table Support, with Table, over the Column and lower it so that it rests on the column support. Nip up the Table Support Locking Handle (Fig. 1).

Fig. 1



C. Head to Column.

NOTE: It may be necessary to unscrew the Head Lock Set Screws (A fig.2), to ensure they do not protrude internally, as this would prevent the head from sliding fully into position.

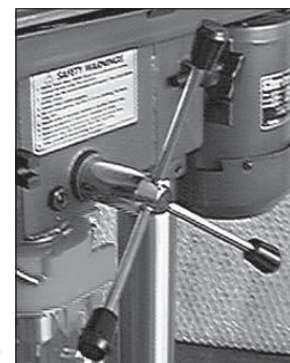
1. With assistance, raise the Head, and locate it on top of the Column, ensuring it slides home fully.
2. Align the head with the base, and tighten down the Head Lock Set Screws using the wrench provided, to secure the head.

Fig. 2



3. Locate the three feed handles, and screw them firmly into the hub of the feed shaft (Fig.3).

Fig. 3



D. Chuck Guard Assembly

Slide the Chuck Guard over the Quill Shaft and nip up the pinch bolt, temporarily, with the pinch bolt facing the front (see fig.4). Ensure the Quill Shaft/Spindle is at the top of its travel.

NOTE: This operation should be carried out before the chuck is installed.

E. Installing the Chuck.

1. Slide the work table up the column to within 6" of the spindle.
2. Open the jaws of the chuck to their maximum, using the chuck key supplied.
3. Put a piece of scrap wood on to the table to protect the chuck nose.
4. Ensuring all parts are thoroughly clean, dry, and burr free, place the chuck over the end of the spindle, and pull the spindle down using the feed handles, pressing the chuck hard against the piece of scrap wood until the chuck is forced home.
5. Slacken the chuck guard pinch bolt and turn the chuck guard so the the pinch bolt is towards the rear and tighten the pinch bolt.

Fig. 4



F. Belt Cover Knob.

Locate the knob, with pan head screw, and attach to the cover, screwing on tightly.

Fig. 5



G. Fitting the Drive Belt.

1. Undo the Belt Tension Locking Screw (A, Fig.5), and, referring to the chart inside the belt cover (which is duplicated on page 12), fit the belt in the position corresponding to the spindle speed required.

CHECKING THE OPERATION OF THE MICROSWITCH

IMPORTANT:

When closing the cover, check the operation of the Microswitch. It is important that it operates immediately the cover is pulled open, in order to prevent the machine from operating.....NOT when the cover is opened sufficiently for fingers to be inserted. If necessary, bend the actuating tab, which is attached to the cover, to ensure this.

Fig.6

2. Lever the motor, on its bracket, away from the head, so that tension is applied to the belt. Tension is correct, when the belt deflects by approx. 1/2" at its centre, when using reasonable thumb pressure. Lock the motor in this position using the Locking Screw.

NOTE: If the belt should slip whilst drilling, adjust the belt tension.



H. Assembling the Depth Stop Assy.

Slide the end of the threaded rod through the bracket on the side of the head and through the hole in the Guard Collar. (It may be necessary to turn the collar slightly to line up the hole). Secure with the nut provided, from beneath, thereby locking the Depth Stop to the Guard Collar and hence the Spindle.

(Therefore, as the Spindle is moved downwards, the depth Stop will move by the same amount).

The pointer may be zeroed by sliding it up or down on its mounting.

For adjustments, see below.

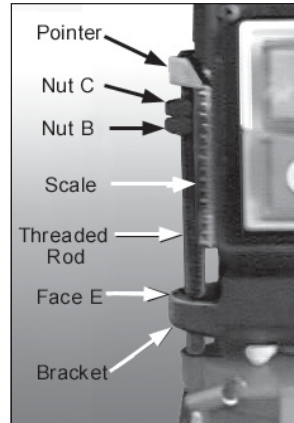


Fig. 7

SETTINGS and ADJUSTMENTS

1. Table.

The table may be raised, lowered or swivelled about the column, by slackening off the table support locking handle, adjusting accordingly, and re-tightening the handle.

It may also be tilted by loosening the M12 hex. screw, which secures the table to its' mounting beneath the table, tilting to the required position and re-tightening the screw.

A scale is provided on the table mounting, measured in degrees, to assist in setting the required angle (fig.10).

For all normal operations, the table should be set to 0°.

To check to ensure the table is entirely square to the drill, insert a piece of straight round bar in the chuck, place a square on the table, and bring it up to the round bar. Adjust the table tilt if necessary, so that the table is correctly aligned.

Fig. 8



Table Support Locking Handle



Fig. 9

Table shown tilted and swivelled about the column

Fig. 10



Table Tilt Scale

2. Spindle Depth Stop (All references are to Fig. 7)

On the left side of the drill head, is the Spindle Feed (or Depth Feed) adjuster assembly, which allows the depth of hole to be set. For setting a particular depth, proceed as follows:

1. Lower the Chuck - with the power OFF, until the drill bit contacts the surface of the workpiece, and hold in that position.
2. Spin down the adjuster nut (B), so that the gap between its underside, and face E, is the depth of the hole required. Spin down nut C and lock it against B.

The drill is now set to drill holes to your predetermined depth, from that particular start point. i.e. Providing the surface of your workpiece is flat and level, you may drill a series of holes, each to the same depth quickly and accurately.

The Scale and pointer can be used to drill one off, by lowering the chuck, with the power OFF, until the drill bit contacts the work, setting the pointer to a chosen mark on the scale, switching ON the drill, and proceeding to drill to the required depth past your chosen mark.

3. Changing Drill (Spindle) Speed.

Fig. 11

Before changing the speeds, ensure the machine is switched OFF, and disconnected from the mains supply.

1. Open the pulley cover.
2. Slacken off the Belt Tension Locking Screw, to relieve any tension on the drive belt (see fig.5).
3. Consult the chart inside the pulley cover, and position the belt on the pulley's, according to the spindle speed required.
4. When the belt has been correctly positioned, re-tension by levering the motor away from the head, until the belt deflects by approx. 1/2" at its centre when using reasonable thumb pressure. Lock the motor in this position with the Belt Tension Locking Screw.



DRILL SPEED TABLE

The table below gives the belt arrangement for given drill speeds. The diagram shows the belts fitted to step D of the Spindle Pulley - 4 of the Motor Pulley, giving a drill speed of 1,900 RPM.

Spindle Speed (RPM)	Belt Position
500	A1
890	B2
1400	C3
1900	D4
2500	E5

A full chart is also located on the inside of the pulley cover.



OPERATION.

1. Insert the drill bit into the jaws of the chuck by approx 1", ensuring that the jaws do not touch the flutes of the drill. Before tightening the chuck ensure that the drill is centred within the jaws.
2. Ensure the table height and position is set, so that drill travel is sufficient for the job in hand.
3. Ensure the work is securely clamped or held in a drill vice, bolted to the table. Never hold it with bare hands. Severe personal injury may be caused if the workpiece is whipped out of the operator's hand, and, damage to the machine incurred if the work strikes the column.

If the piece is of irregular shape and cannot be laid flat on the table, it should be securely blocked and clamped.

Any tilting, twisting or shifting, results not only in a rough hole but also increases drill breakage.

4. For small workpieces, that cannot be clamped to the table, use a Drill Press Vice. The vice must be clamped or bolted to the table.
5. When drilling completely through wood, always position a piece of scrap wood between the workpiece and the table to prevent splintering on the underside of the workpiece as the drill breaks through. The scrap piece of wood must make contact with the left side of the column as shown in Fig 12. In addition, set the depth of drill travel so that the drill cannot possibly come into contact with the table, or align the table so that the hole in its' centre is directly in line with the drill bit.

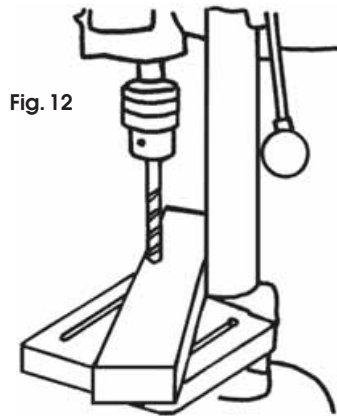


Fig. 12

6. When completely satisfied that the setup is sound, lower the Chuck Guard into place, and switch the machine ON by pushing the GREEN 'I' button. To switch OFF...push the RED 'O' button, see fig. 13.

NOTE:

- a. As a safety feature, the ON/OFF switch is a No Volt Release type. Therefore, if the power is interrupted whilst the machine is switched ON, it will not automatically start when the power is restored.
- b. A Micro switch is provided within the Pulley Cover, which prevents the machine from operating unless the Pulley Cover is firmly closed. It is important that this switch operates correctly at all times, and should be checked as described on page 10.

Fig. 13



**Drill Press Vices, Cross Vices and Clamps,
are available from your CLARKE dealer.**

MAINTENANCE

For maximum performance, it is essential that the Drill Press is properly maintained. Always inspect before use. Any damage should be repaired, and faults rectified.

If the mains lead is worn or cut, or damaged in any way, it should be replaced immediately.

Please refer to the trouble shooting chart on page 15 . If you are unable to rectify any faults, please contact your local dealer or Clarke International Service Division on 020 8556 4443 for assistance.

Monthly (When in constant use)

1. Check tightness of mounting bolts, and, head and column securing set screws.
2. Check belt for wear and replace if frayed or damaged in any way.
3. Blow out any dust that may have accumulated in the motor fan.
4. Apply a thin coat of wax paste or light oil to the table and column for lubrication and to help prevent corrosion.

Lubrication

All bearings are packed with grease at the factory and require no further lubrication.

After use

Remove all swarf from the machine and thoroughly clean all surfaces.

Components should be dry, with machined surfaces lightly oiled.

Always remove drill bits, and store in a safe place.

CUTTING SPEEDS

Factors which determine the best speed to use in any drill press operation are:

- Kind of material being worked
- Size of hole
- Quality of cut desired
- Type of Drill

Generally, the smaller the drill, the greater the required RPM. In soft material, the speed should be higher than for hard metals.

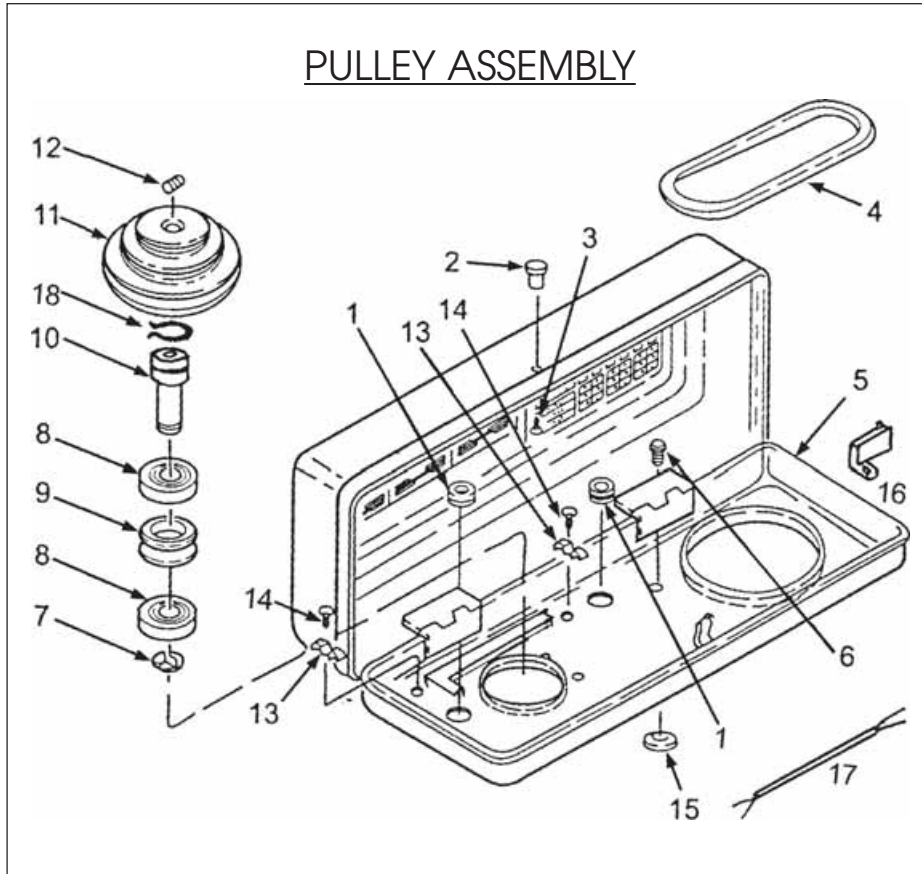
As a guide, the drill speed for a given drill bit size, is according to the table below.

Speed Range (RPM)		2500	1900	1400	890	500
Wood	in	3/8	1/2	-	-	-
	mm	9.5	12.5	-	-	-
Alum, Zinc & Brass	in	7/32	11/32	15/32	-	-
	mm	5.6	8.75	12	-	-
Iron & Mild Steel	in	3/32	5/32	1/4	3/8	1/2
	mm	2.4	4	6.4	9.5	12.5

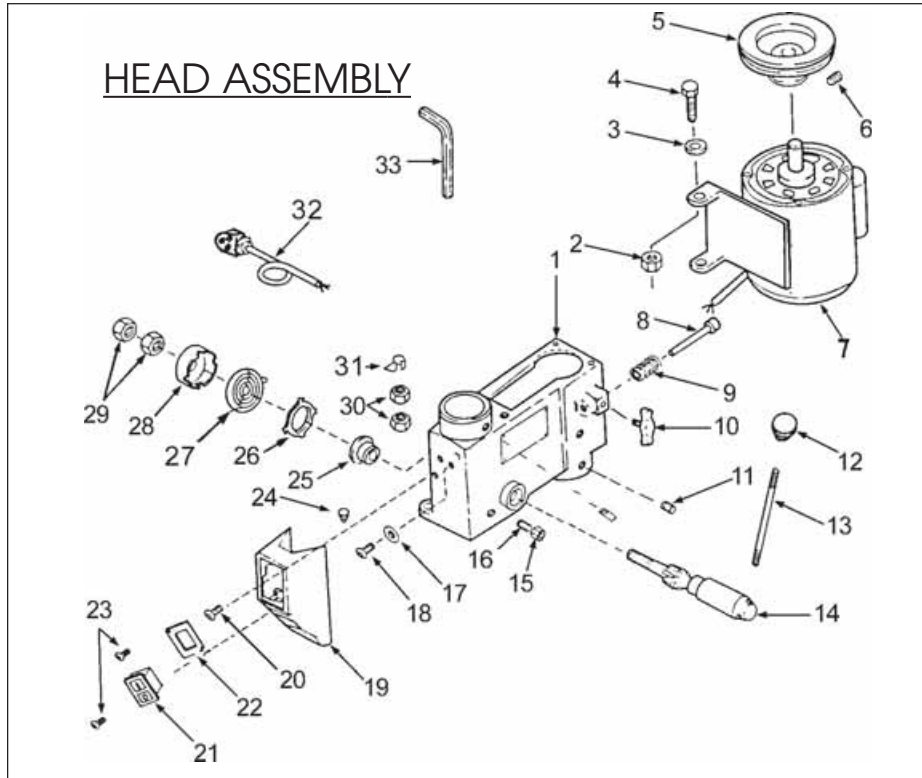
TROUBLE SHOOTING

PROBLEM	PROBABLE CAUSE	REMEDY
Noisy operation (under load)	<ul style="list-style-type: none"> A) Incorrect belt tension B) Dry spindle C) Loose pulley D) Loose belt E) Worn bearing 	<ul style="list-style-type: none"> A) Adjust tension B) Remove spindle/quill assembly and lubricate C) Tighten pulley D) Adjust belt tension E) Replace bearing
Excessive drill wobble	<ul style="list-style-type: none"> A) Loose chuck B) Worn spindle, or bearing C) Worn chuck D) Bent drill 	<ul style="list-style-type: none"> A) Tighten by pressing chuck down on to a block of wood against table. B) Replace spindle shaft or bearing C) Replace chuck D) Renew Drill
Motor won't start	<ul style="list-style-type: none"> A) Power supply B) Motor connection C) NVR Switch connections D) Faulty switch E) Motor windings burned F) Pulley Cover not closed. G) Micro Switch inoperative. 	<ul style="list-style-type: none"> A) Check power cord/fuse B) Check motor connections C) Check switch connections D) Replace switch E) Replace motor F) Close pulley cover. G) Check operation of micro switch, per instructions Page 10. If switch operates correctly but motor fails to start consult your Clarke dealer
Drill binds in workpiece	<ul style="list-style-type: none"> A) Excessive feed pressure B) Loose belt C) Loose drill D) Incorrect drill speed. E) Drill angles incorrect for type of material 	<ul style="list-style-type: none"> A) Apply less pressure B) Check belt tension C) Tighten drill with key D) Refer to Cutting Speed chart, and adjust drill speed accordingly E) Consult an appropriate manual re. Materials, Drills and Cutting Angles, and sharpen drill accordingly.
Drill burns or smokes	<ul style="list-style-type: none"> A) Incorrect speed. B) Chips are not discharging C) Dull drill or incorrect clearance for material. D) Needs coolant E) Excessive feed pressure 	<ul style="list-style-type: none"> A) Refer to Cutting Speed chart, and adjust drill speed accordingly B) Clean drill C) Check sharpness & profile D) Use coolant whilst drilling E) Apply less pressure
Table difficult to raise	<ul style="list-style-type: none"> A) Needs lubrication B) Table lock tightened 	<ul style="list-style-type: none"> A) Lubricate with light oil B) Loosen clamp

PULLEY ASSEMBLY

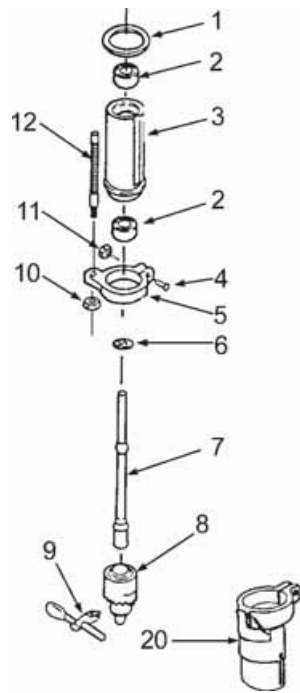


Item	Description	Part No	Item	Description	Part No.
1	Rubber Bushing	DD20105012	11	Spindle Pulley	DD13105006
2	Knob	DD16105008	12	Hex Socket Set Screw	DDGB80-85
3	Pan Head Screw	3040656	13	Cable Clamp	DD16102014
4	'V' Belt K26	DD13105007	14	Pan Head Screw M5	3040410
5	Pulley Cover w/labels	DD13105000	15	Foam Washer	DD0805009
6	Washer Hd. Screw M6	3040650	16	Micro switch	DD13105009
7	Circlip	DDGB8941-86	17	Power Cable	DD13202029
8	Ball Bearing 60203	BGR60203	-	Microsw. Cover	N/A
9	Spacer	DD13102023			
10	Pulley Insert	DD13102022			

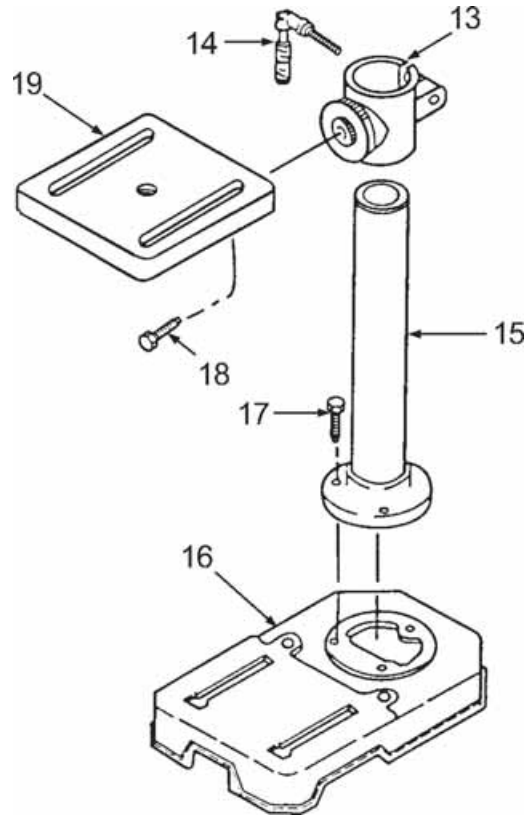


Item Description	Part No.	Item Description	Part No.
1 Head w/Roll Pin & trim	DD13102001	18 Pan Head Screw M5	DDGB818-85
2 Locknut M8	3040601	19 Sw. Box w/Depth Scale	DD13102008
3 Washer	DDGB97.2-85	20 Pan Head Screw M5	3040656
4 Hex. Screw M8	3040502	21 No Voltage Switch	DDKJD6
5 Motor Pulley	DD13105005	22 Switch Plate Cover	DD13102009A
6 Screw hex. Skt M6	3040487	23 Self tapping Screw M5	DDGB845-85
7 Motor	DDYYG71S4W	24 Connector Wire	DD13302019
8 Stop Motor	DD13102002	25 Spring Seat	DD13104006
9 Spring - (Motor Stop)	DD13102004	26 Spring Retainer	DD13104007
10 Belt Tension Lock Screw	DD13102005	27 Quill Spring	DD13104009
11 Hex. Skt Screw M8	3040435	28 Quill Spring Cap	DD13104008
12 Knob	DD13104011	29 Hex Nut. 3/8	n/a
13 Rod	DD13104005A	30 Hex Nut M10	3040602
14 Pinion Shaft	DD13104002	31 Pointer	DD13106002
15 Hex. Nut M8	3040601	32 Power Cable	DD13102015
16 Flt Set Screw M8	DD13102021	33 Allen Key 4mm	DDGB5356-85
17 Ext. Lockwasher 5mm	DDGB862.1-87		

QUILL ASSY.



BASE & TABLE



Item Description	Part No	Item Description	PartNo
1 Quill Gasket	DD13303003	11 Hex. Nut M5	3040608
2 Ball Bearing	BRG60201	12 Stop Rod	DD13103005
3 Quill Shaft	DD13103002	13 Table Support w/scale	DD13101004
4 Pan Hd. Screw M5	3040411	14 Table Spt. Lock Handle	DD16101013
5 Guard Collar	DD13103004	15 Column Support	DD13101003
6 Retaining Ring	DDGB8941-86	16 Base	DD13101001
7 Spindle Shaft JT33	DD13103001B	17 Hex. Hd Screw M8	3040501
8 Chuck JT33	DDJ2163	18 Hex. Hd Screw M12	1001284
9 Chuck Key	DD13303010	19 Table	DD13101014
10 Hex. Nut M6	3040600 11	20 Chuck Guard Assy	DD13108001

SPECIFICATIONS

Motor	230VAC, 50Hz, 1 Phase
Power Rating	245Watts
Current Rating	1.03Amps
Speed	1400RPM
Fuse Rating	13Amps
No. of Speeds	5
Chuck Capacity	13mm
Spindle Taper	JT33
Table Type	Square - Dry
Table Dimensions	165x160mm
Table T- Slot Dimensions	15x125mm
Max. Spindle Travel	50mm
Max. Dist. Chuck to Table	182mm
Max. Dist. Chuck to Column	102mm
Column Dia.	46mm
Quill Collar Dia.	40mm
Dist. Column to Chuck Centre	103mm
Overall Dimensions	570X240X430mm
Base Size	180X285mm
Belt Type	K26 - 660
Weight	19.6kg

OPTIONAL ACCESSORIES

**Drill Press Vices, from 3" to 6", Cross Vices (Cast Iron),
and Table Clamps
are available from your CLARKE dealer**

SPARE PARTS & SERVICING

For Spare Parts and Service, please contact your nearest dealer,
or CLARKE International, on one of the following numbers.

PARTS & SERVICE TEL: 020 8988 7400
PARTS & SERVICE FAX: 020 8558 3622
or e-mail as follows:
PARTS: Parts@clarkeinternational.com
SERVICE: Service@clarkeinternational.com